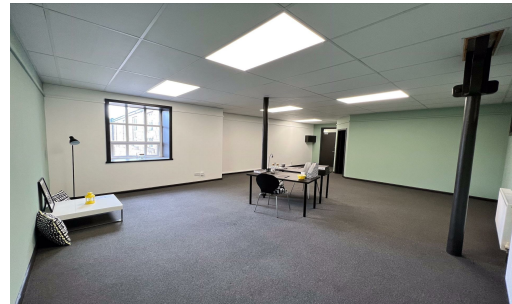


Offices at Lomeshaye Business Village, Turner Road, Nelson, BB9 7DR

TO LET



TO LET

Use - Office

Size - 100 - 1,060 Sq ft

Rent - From £6 per sq.ft

- *APRIL OFFER - 3 MONTHS AT HALF RENT*
- High Quality Individual Office Suites
- Excellent location adjacent to Junction 12 of the M65 motorway
- Flexible lease terms
- Competitive rentals



COMMERCIAL PROPERTY AGENTS, CHARTERED SURVEYORS AND VALUERS

www.taylorweaver.co.uk

Telephone: 01254 699030

Email: info@taylorweaver.co.uk

Offices at Lomeshaye Business Village, Turner Road, Nelson, BB9 7DR

Location

Lomeshaye Business Village is situated adjacent to Junction 12 of the M65 motorway on the popular Lomeshaye Industrial Park in Nelson.

Description

Lomeshaye Business Village comprises a 116,500 sq.ft business village complex with 128 business/office/industrial units ranging from 94 sq.ft up to 1,060 sq.ft.

The business centre is able to offer flexible high quality office accommodation at competitive rentals.

Other features of the development include flexible licence agreements, fully serviced offices, on site management team, modern office furnishings, telephone answering, fax, photocopying and postal services, kitchen facilities, security, mail boxes, cleaning and maintenance of the communal areas.

Accommodation

We have a large number of suites ranging from 94 sq. ft. - 1,060 sq. ft.

Rental

From £6 per sq.ft

Lease Terms

The units are available on flexible lease terms.

Rating

The units will require assessment upon occupation but we would expect the majority to be under the threshold for business rates relief.

Services

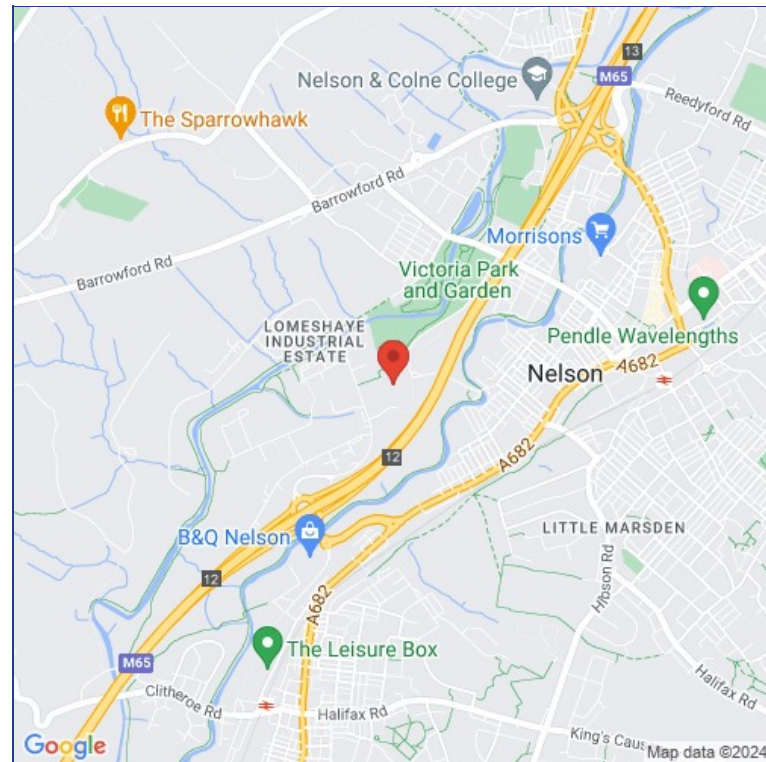
All mains services are connected to the development. Electricity and gas are metered and charged monthly.

EPC

Taylor Weaver act in the capacity as introductory agents and understand that the Vendor/Landlord will supply the appropriate Energy Performance Certificate when requested

Viewing

Strictly through sole agents
Taylor Weaver
(Rebecca Weaver)
01254 699030



www.taylorweaver.co.uk

Telephone: 01254 699030



Email: info@taylorweaver.co.uk

Taylor Weaver is a trading name of Taylor Weaver Limited. Registered Office: Unit 17 Trident Park, Trident Way, Blackburn BB1 3NU – Company Registration No. 04132040. MISREPRESENTATION ACT: Taylor Weaver (and their joint agents where applicable) for themselves and for the vendors or lessors of this property for whom they act, give notice that: (i) these particulars are a general outline only, for the guidance of prospective purchasers or tenants and do not constitute the whole or any part of an offer or contract; (ii) Taylor Weaver cannot guarantee the accuracy of any description, dimensions, references to condition, necessary permissions for use and occupation and other details contained herein, and prospective purchasers or tenants must not rely on them as a statement of fact or representations and must satisfy themselves as to their accuracy; (iii) no employee of Taylor Weaver (and their joint agents where applicable) has any authority to make any representation or warranty to enter into any contract whatever in relation to the property; (iv) prices or rents quoted in these particulars may be subject to VAT in addition; (v) Taylor Weaver will not be liable in negligence or otherwise for any loss arising from the use of these particulars.