



## ***3 Haworth Court Belvedere Place, Scarborough, YO11 2QQ***

***Offers Over £185,000***

- ***MID TERRACE HOUSE***
- ***FITTED DINING KITCHEN***
- ***LARGE INTEGRAL GARAGE***
- ***NEW CARPETS & DECORATIONS***
- ***2 DOUBLE BEDROOMS***
- ***GAS CENTRAL HEATING***
- ***SPACIOUS LOUNGE***
- ***3- PIECE BATHROOM***
- ***DOUBLE GLAZING***

## 3 Haworth Court Belvedere Place, Scarborough YO11 2QQ

ANDREW COWEN ESTATE AGENTS are delighted to bring to the market this WELL MAINTAINED MID TERRACE HOUSE with INTERNAL GARAGE in the HIGHLY SOUGHT AFTER SOUTH CLIFF of Scarborough. OFFERING, LOUNGE, TWO DOUBLE BEDROOMS, SPACIOUS KITCHEN/DINER AND FAMILY BATHROOM. NEW CARPETS AND DECORATIONS THROUGHOUT. NO ONWARD CHAIN.



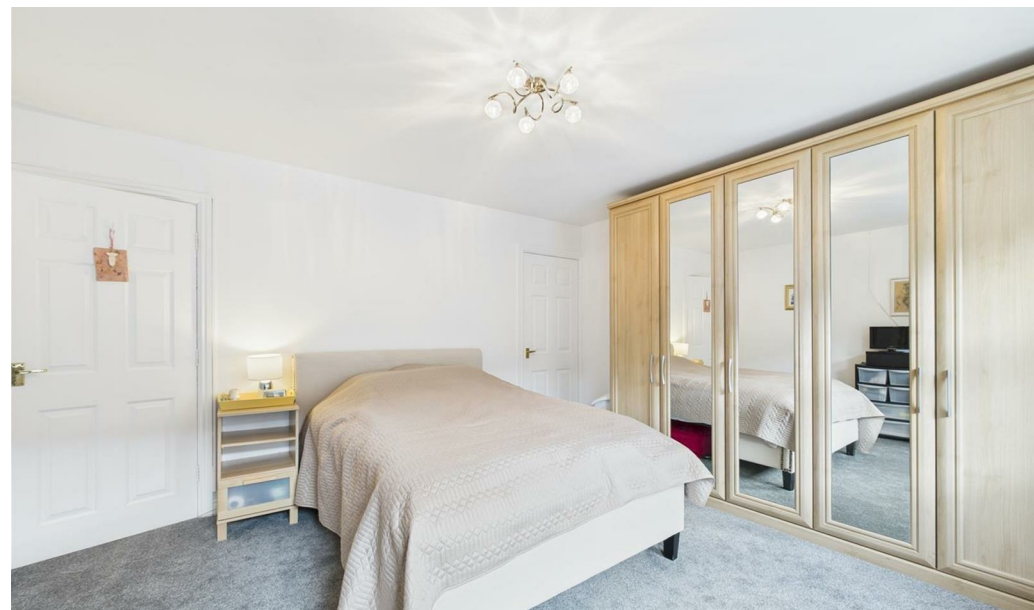
Council Tax Band: B





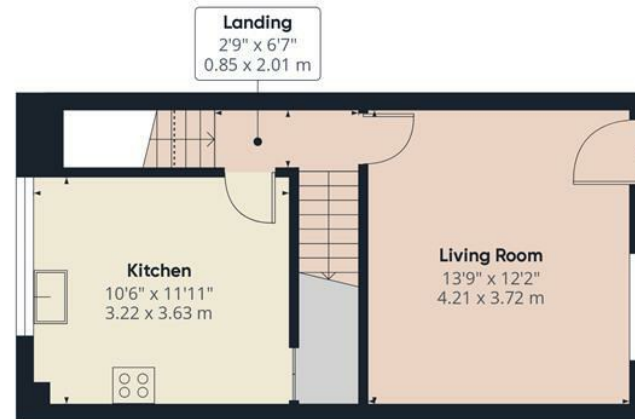
Andrew Cowen Estate Agents are delighted to bring to the market this perfect opportunity to purchase an affordable TOWN HOUSE with INTERNAL GARAGE in the HIGHLY SOUGHT AFTER SOUTH CLIFF of Scarborough. This fantastic property briefly comprises Lounge, Hall with stairs to first floor landing and stairs to the lower ground floor and door leading to rear of property and double garage and bin area. To the first floor of the property you are presented with two double bedrooms and family bathroom. New carpets and decorations throughout, making this property "In our opinion" ready to move into.

Belvedere Place is located on Scarborough's South Cliff, just off West Street within close proximity of the Esplanade and is well placed for a wealth of local amenities and attractions including a parade of Shops and supermarket on Ramshill, a choice of Schools and colleges, golf course as well as Scarborough's South Bay and the beach.

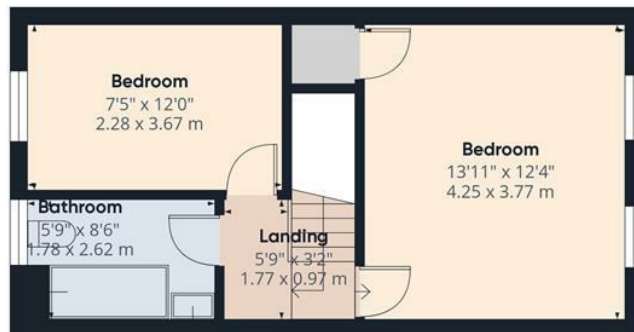




Floor 0



Floor 1



Floor 2



Approximate total area<sup>(1)</sup>

1088.34 ft<sup>2</sup>

101.11 m<sup>2</sup>

(1) Excluding balconies and terraces

Reduced headroom

..... Below 5 ft/1.5 m

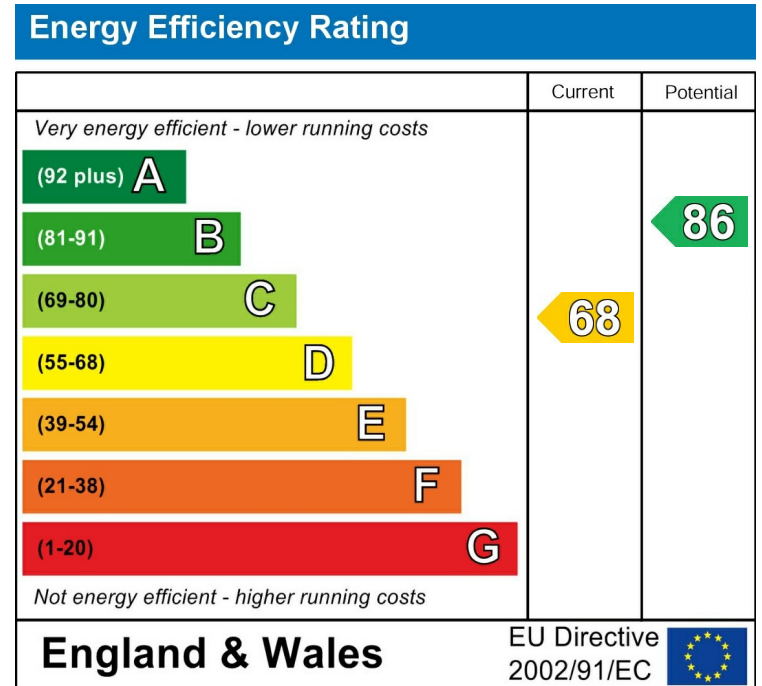
While every attempt has been made to ensure accuracy, all measurements are approximate, not to scale. This floor plan is for illustrative purposes only.

Calculations are based on RICS IPMS 3C standard.

GIRAFFE360







## Viewings

Call the office to make  
an appointment today!

**01723 377707**



**SCAN ME**

**View our website here!**

## Looking to Sell?

Book a no obligation valuation today!

**01723 377707**