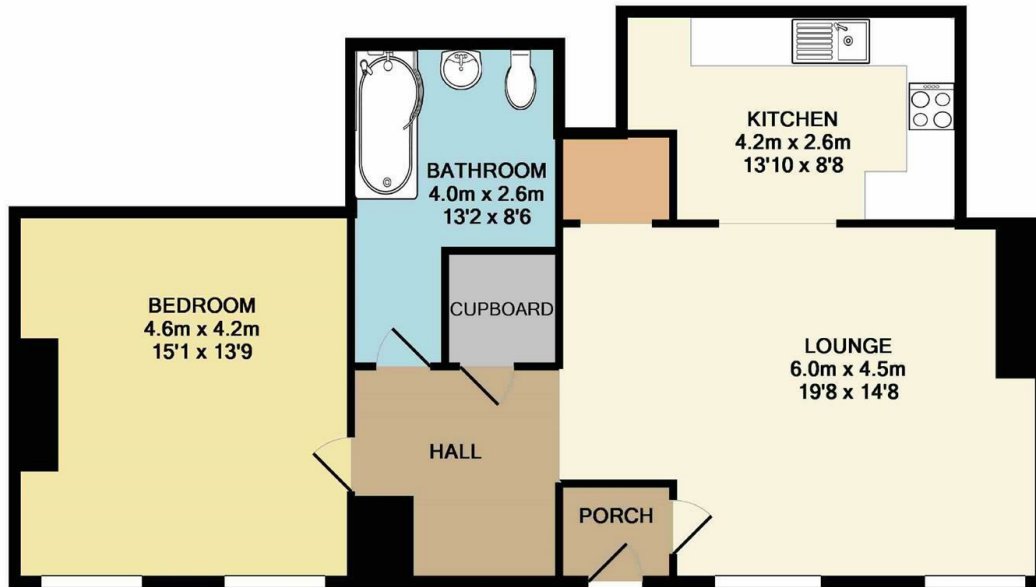




Flat 5a 5 Belvoir Terrace, Scarborough, YO11 2PP

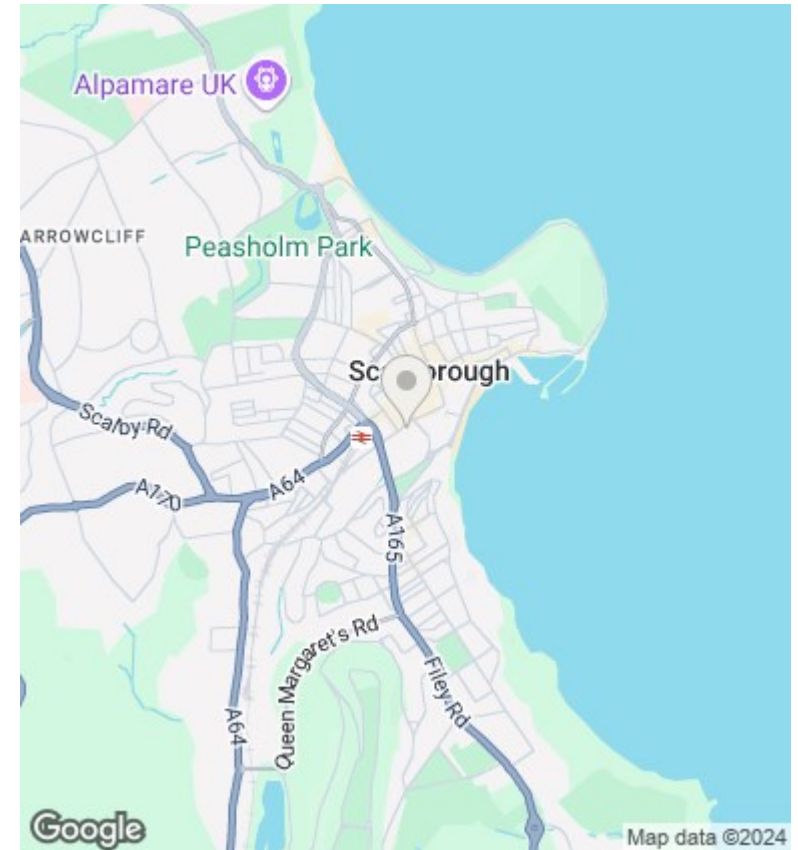
£695 PCM

- ONE BEDROOM TOWN CENTRE LUXURY APARTMENT
- FULLY FURNISHED
- OPEN PLAN LOUNGE/KITCHEN AND LARGE BEDROOM
- LARGE BATHROOM WITH BATH AND SHOWER
- EPC RATING E



TOTAL APPROX. FLOOR AREA 72.6 SQ.M. (781 SQ.FT.)

Whilst every attempt has been made to ensure the accuracy of the floor plan contained here, measurements of doors, windows, rooms and any other items are approximate and no responsibility is taken for any error, omission, or mis-statement. This plan is for illustrative purposes only and should be used as such by any prospective purchaser. The services, systems and appliances shown have not been tested and no guarantee as to their operability or efficiency can be given
Made with Metropix ©2016



Viewings

Viewings by arrangement only. Call 01723 377707 to make an appointment.

Council Tax Band

B

EPC Rating:

E

Energy Efficiency Rating		Current	Potential
Very energy efficient - lower running costs			
(92 plus)	A		
(81-91)	B		79
(69-80)	C		
(55-68)	D	50	
(39-54)	E		
(21-38)	F		
(1-20)	G		
Not energy efficient - higher running costs			
England & Wales		EU Directive 2002/91/EC	