

10 Sea View Crescent, Scarborough, YO11 3JE

Offers In The Region Of £325,000

- DETACHED HOUSE
- GARAGE
- TWO RECEPTION ROOMS
- FOUR BEDROOMS
- DRIVEWAY
- CONSERVATORY
- LANDSCAPED GARDENS
- BALCONY WITH VIEWS
- HIGHLY SOUGHT AFTER AREA

10 Sea View Crescent, Scarborough YO11 3JE

Andrew Cowen Estate Agents are delighted to present to the market this WELL PRESENTED, FOUR BEDROOM DETACHED house situated in the highly SOUGHT AFTER SOUTHSIDE LOCATION boasting ATTRACTIVE FRONT AND REAR GARDENS, DRIVEWAY AND INTEGRAL GARAGE. This charming property also benefits from UPVC DOUBLE GLAZING and GAS CENTRAL HEATING making this the perfect home for a RANGE OF BUYERS. NO ONWARD CHAIN.



Council Tax Band: B



This beautifully presented property briefly comprises; inner and porch leading into the entrance hall with tiled flooring which provides access into the modern fitted kitchen with a range of base and wall units and ample worktop space. The property also boasts a spacious conservatory/dining space which allows plenty of natural light. There is also a separate lounge space accessed via the sliding oak barn door, which is immaculately presented with window shutters and feature log burner, and a downstairs W/C. To the first floor lies four bright and airy bedrooms, one complete with built in wardrobe supplying plenty of storage space, and double doors from another leading out onto the balcony overlooking the scenic views of Oliver's Mount and the sea, ideal for alfresco dining There is also a three-piece contemporary bathroom suite with overhead shower and tiled walls and flooring.

Externally, the property boasts picturesque, landscaped gardens across two tiers with a patio area for garden furniture to the rear, as well as beautiful lawn to the front with block-paved driveway and integral garage.

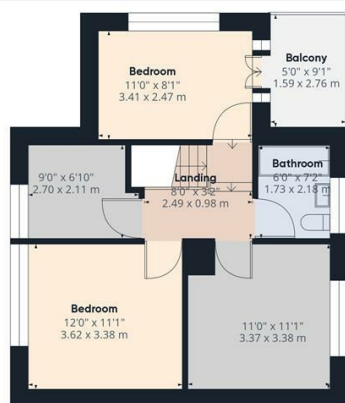
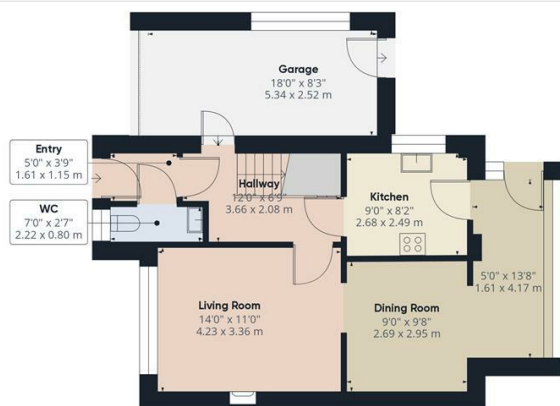
Being located in the popular South of Scarborough, the property offers good access to a range of amenities and attractions including local shops, public house, Cayton Bay beach and the Cleveland Way which is ideal for walkers, plus the property is also on a regular bus route to

*and
View
this p
Tear*









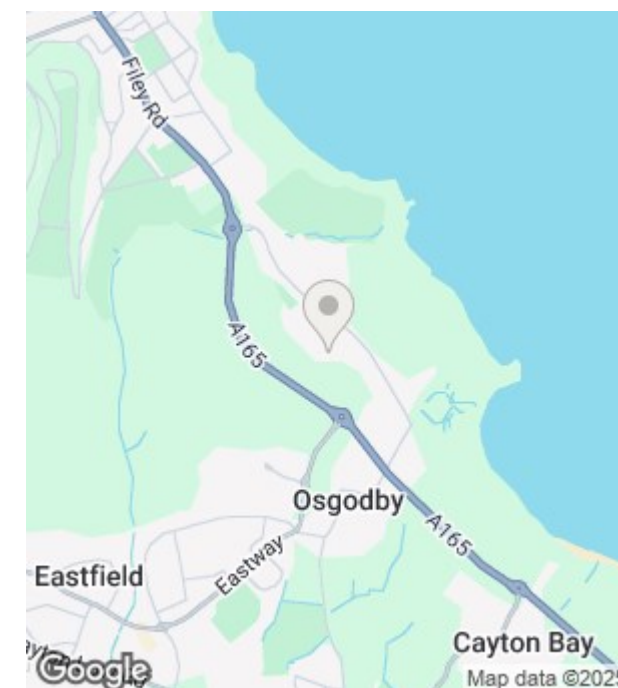
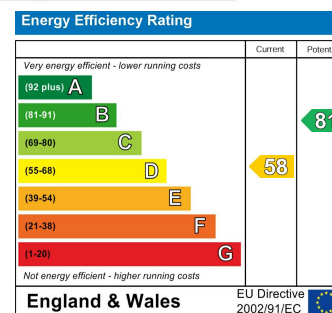
Approximate total area⁽¹⁾

1163.79 ft²
108.12 m²

(1) Excluding balconies and terraces

While every attempt has been made to ensure accuracy, all measurements are approximate, not to scale. This floor plan is for illustrative purposes only.

GIRAFFE360



Viewings

Call the office to make an appointment today!

01723 377707



SCAN ME

View our website here!