



35 Caesars Road

Wheathampstead, AL4 8NR

60ft private rear garden, over 800 sq ft inside, wide open outlook and countryside views above the rooftops in the distance. This rare first-floor maisonette in the charming village of Wheathampstead features two generous double bedrooms, a well-fitted 17ft kitchen, a spacious entryway, and wide stairs leading to a landing that's ideal for a modest home office area. The secluded south facing rear garden is perfect for entertaining, and the property also includes an external storage unit and convenient street parking. Set back from the road in a peaceful neighbourhood, it's just a short stroll to local cafés, restaurants, Tesco Express, and excellent schools. Chain free.

Guide price £375,000

35 Caesars Road

Wheathampstead, AL4 8NR



- First floor maisonette with separate entrance
- 60 ft south facing private garden, not overlooked
- Over 800 sq ft of living space
- Rare opportunity in desirable Wheathampstead
- Attractive frontage set back from the street
- Two generous double bedrooms
- Countryside views in the distance
- 10 min drive to Harpenden (fast trains to London)
- Well fitted 17ft kitchen

ACCOMMODATION

Entrance Lobby

Entrance Hall

Kitchen/Breakfast Room

17'3" max x 9'5" (5.26m max x 2.88m)

Lounge/Dining Room

14'6" x 10'11" (4.44m x 3.34m)

Bedroom One

12'8" x 11'0" (3.88m x 3.37m)

Bedroom Two

10'11" x 9'0" (3.34m x 2.76m)

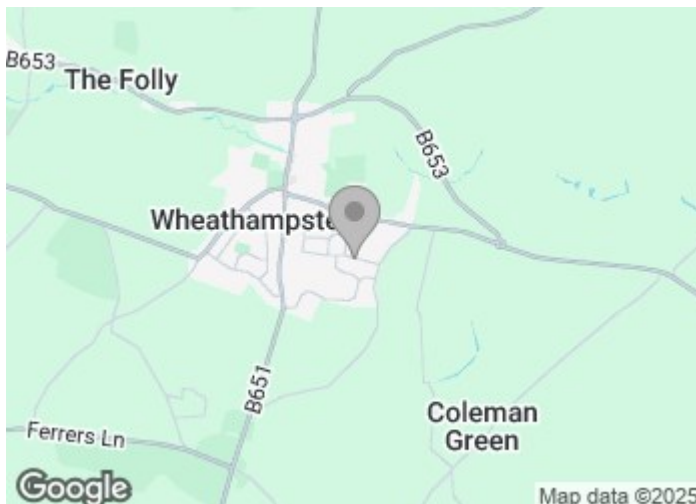
Bathroom

Private Rear Garden

60' deep approx (18.29m deep approx)

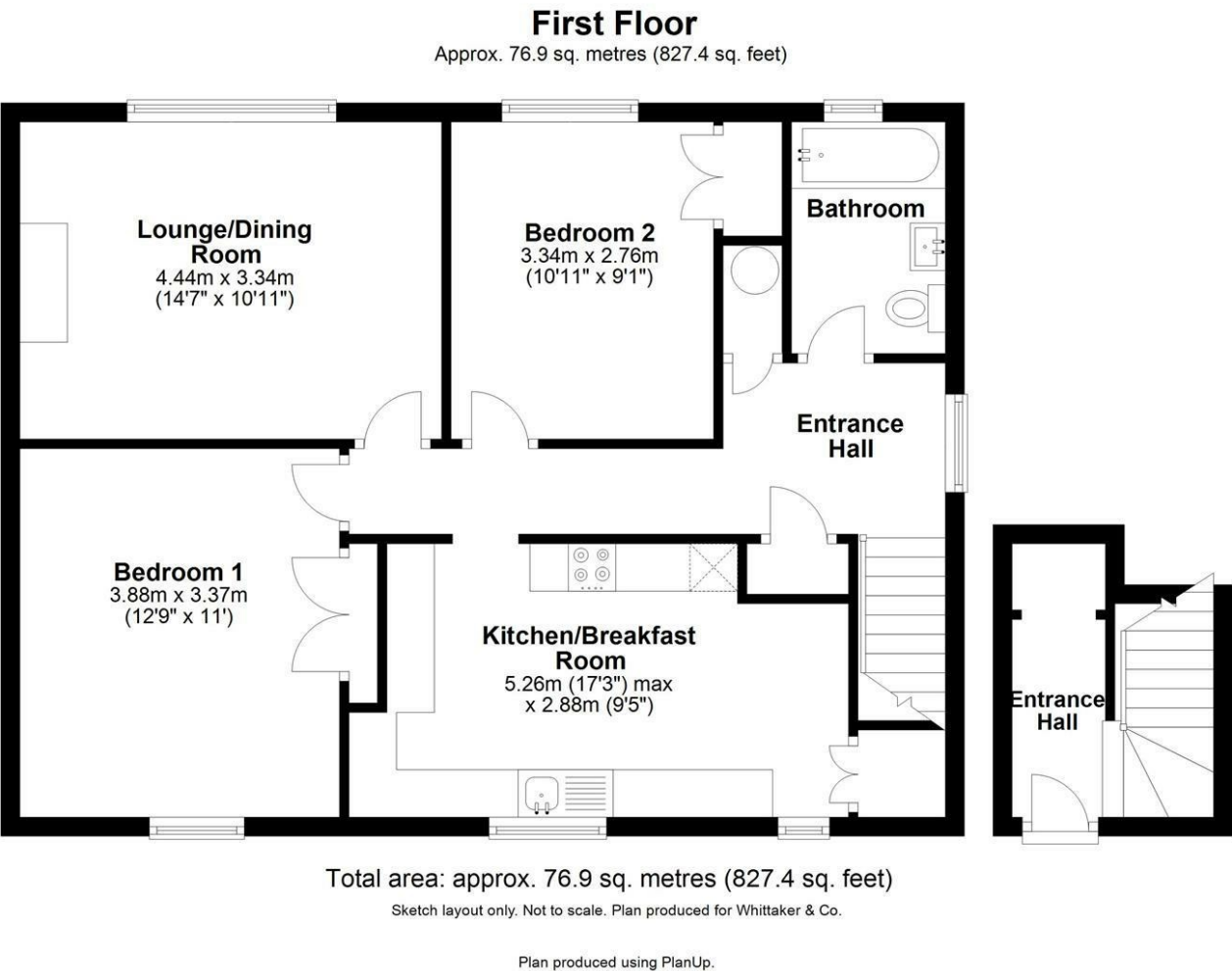
Brick Sheds

EXTERNALLY



Directions





These particulars, whilst believed to be accurate are set out as a general outline only for guidance and do not constitute any part of an offer or contract. Intending purchasers should not rely on them as statements of representation of fact, but must satisfy themselves by inspection or otherwise as to their accuracy. No person in this firms employment has the authority to make or give any representation or warranty in respect of the property.

