



## Milton Road Harpenden, AL5 5LD

Large apartment on the second floor (lift), of this much sought after development. There is a balcony overlooking the communal gardens and the huge benefit of a garage en bloc, as well as plenty of parking for residents (not allocated). Coleridge Court is moments from the town centre and station. Lease 944 years remaining. \*CHAIN FREE\*

**Guide price £500,000**

# Milton Road

Harpenden, AL5 5LD



- Second floor (lift)
- Communal gardens
- Lease 944 years remaining
- Circa 1,050 sq ft
- Garage en bloc
- Moments from town centre & station
- Private balcony
- Plenty of parking for residents
- Chain Free

## Entrance Hall

## Bathroom

## Living / Dining Room

## Garage en bloc

23'2" (max) x 17'2" (max) (7.08 (max) x 5.25 (max))

## Balcony

## Kitchen

9'9" x 8'7" (2.99 x 2.64)

## Bedroom One

12'11" x 11'0" (3.95 x 3.36)

## En-suite Shower Room

## Bedroom Two

12'4" x 9'4" (3.76 x 2.86)

## Bedroom Three

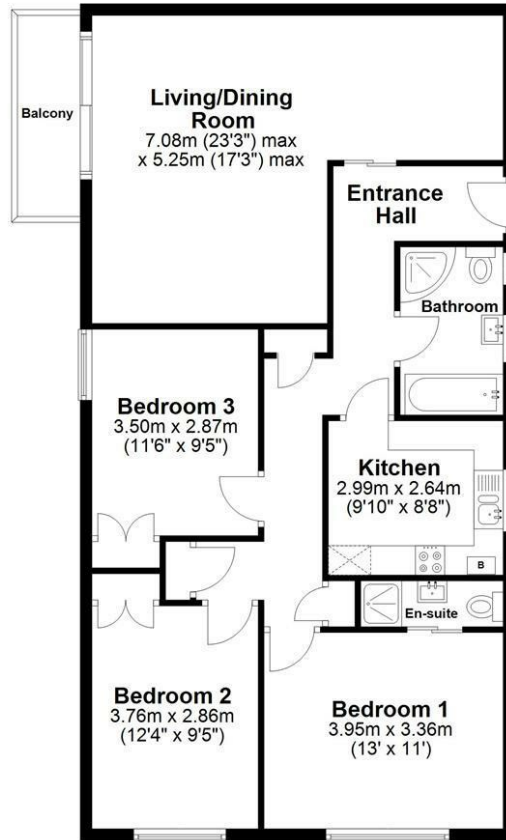
11'5" x 9'4" (3.50 x 2.87)





### Second Floor

Approx. 97.6 sq. metres (1050.2 sq. feet)



Total area: approx. 97.6 sq. metres (1050.2 sq. feet)

Sketch layout only. Not to scale. Plan produced for Whittaker & Co.

Plan produced using PlanUp.

These particulars, whilst believed to be accurate are set out as a general outline only for guidance and do not constitute any part of an offer or contract. Intending purchasers should not rely on them as statements of representation of fact, but must satisfy themselves by inspection or otherwise as to their accuracy. No person in this firm's employment has the authority to make or give any representation or warranty in respect of the property.

