



Long Buftlers

Harpenden, AL5 1JE

Located within this well regarded residential location a fabulous family home of over 3000 sq ft with a fantastic open plan Kitchen / Dining / Living Room. The lovely galleried landing access all four bedrooms; the principal bedroom having a walk in wardrobe, dressing room and en-suite. Additional benefit of a double garage and private garden. Long Buftlers is a peaceful location, moments from open countryside, close to the amenities of Southdown and within easy reach of Harpenden town centre and station.

Guide price £1,750,000

Long Buftlers

Harpenden, AL5 1JE



- Fantastic family home over 3000 sq ft
- Beautifully presented throughout
- Galleried landing accessing the four bedrooms
- Double Garage and off-street parking
- Westerly aspect garden
- Close to open countryside
- Amenities of Southdown nearby
- Within easy reach of Harpenden town centre & station

Entrance Hall

Living Room

18'4" x 13'4" (5.59m x 4.07m)

Study

13'2" x 6'9" (4.02 x 2.08)

Kitchen/Dining/Family Room

46'9" max x 12'9" (14.25m max x 3.90m)

Utility Room

11'3" x 7'0" (3.45m x 2.15m)

Cloakroom

Bedroom One

18'4" x 16'6" (5.60m x 5.04m)

Walk in Wardrobe

8'7" x 5'9" (2.64m x 1.77m)

Dressing Room

11'4" x 7'5" (3.47m x 2.27)

En-Suite Shower

Bedroom Two

13'1" x 11'3" (3.99m x 3.44m)

En-Suite Shower

Bedroom Three

16'7" x 14'9" (5.08m x 4.50m)

Bedroom Four

13'3" x 8'11" (4.04m x 2.74m)

Bathroom and Shower Room

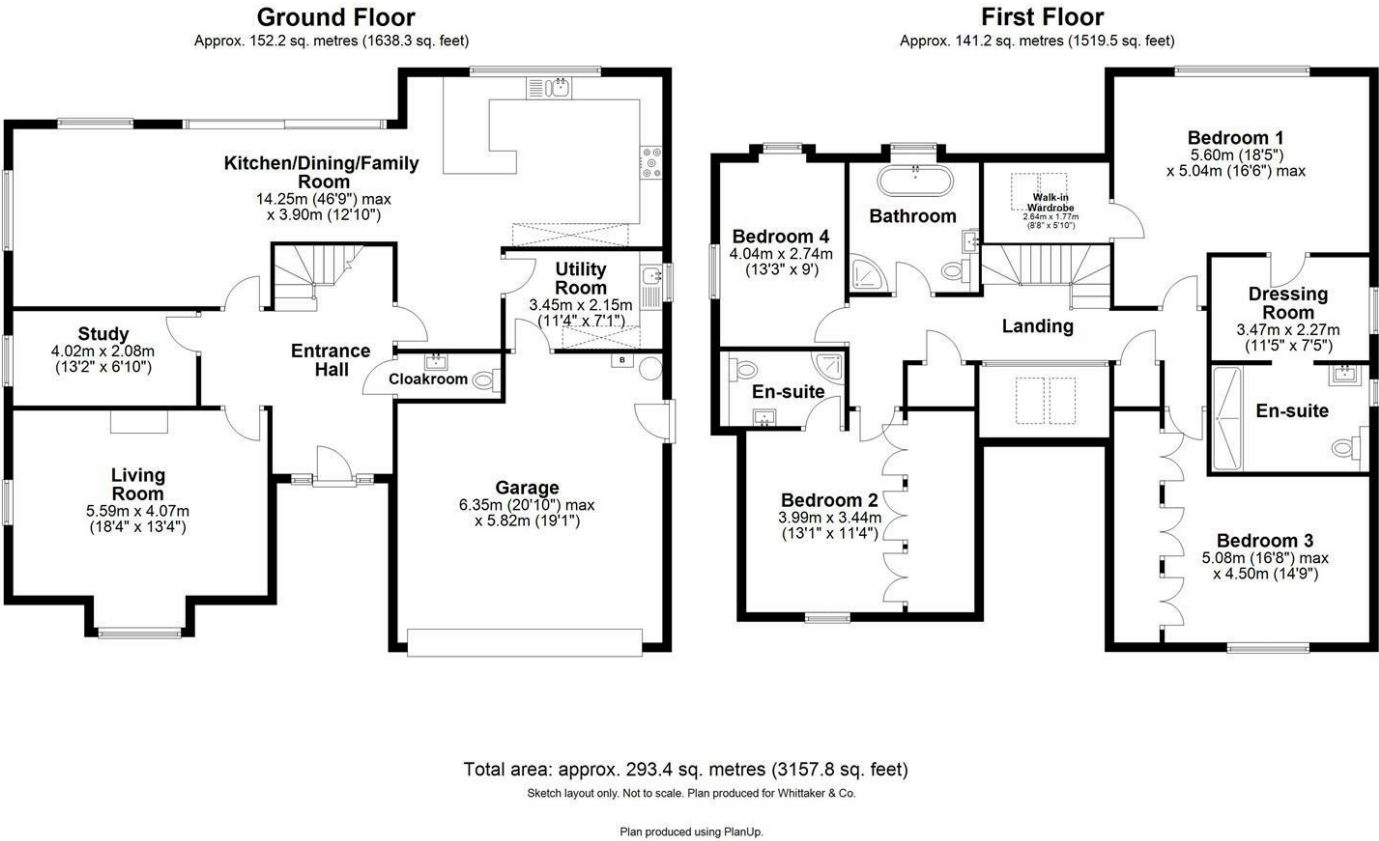
Garage

20'9" x 19'1" (6.35m x 5.82)





Floor Plan



These particulars, whilst believed to be accurate are set out as a general outline only for guidance and do not constitute any part of an offer or contract. Intending purchasers should not rely on them as statements of representation of fact, but must satisfy themselves by inspection or otherwise as to their accuracy. No person in this firms employment has the authority to make or give any representation or warranty in respect of the property.

