



Cooters End Barns

Harpenden, AL5 3NR

A rare opportunity to acquire a gated, rural property with plenty of character within easy access of Harpenden schools and the station. This spacious family home has been renovated to a high stand by the current owners with unusually high ceilings giving a very light feel. Surrounded by countryside with stunning views, with a beautiful, mature, well stocked south east facing garden, ample parking and a detached double garage. ****CHAIN FREE****

Guide price £1,950,000

Cooters End Barns

Harpenden, AL5 3NR



- Rural property surrounded by countryside
- Stunning views
- Detached double garage
- Council Tax band G
- Circa 2,800 sq ft
- Well stocked South East facing country garden
- In excellent order throughout with fabulous ceiling heights
- Gated access
- Ample parking
- Easy access of Harpenden schools and the station

Entrance Hall

Kitchen

14'9" x 11'7" (4.52 x 3.55)

Utility room

Pantry

Dining Area

11'7" x 11'1" (3.54 x 3.39)

Snug

11'7" x 11'3" (3.54 x 3.45)

Cloakroom

Store Room

Study

12'7" x 12'4" (3.84 x 3.77)

Living Room

21'8" x 19'3" (6.62 x 5.89)

Bedroom One

22'6" x 15'2" (6.88 x 4.63)

Dressing Room

11'8" x 6'0" (3.56 x 1.83)

En-suite Shower Room

Bedroom Two

15'8" x 11'7" (4.78 x 3.55)

En-suite Bathroom

Bedroom Three

11'8" x 9'8" (3.56 x 2.95)

Bedroom Four

11'8" x 10'2" (3.56 x 3.10)

Bedroom Five

11'8" x 10'1" (3.56 x 3.08)

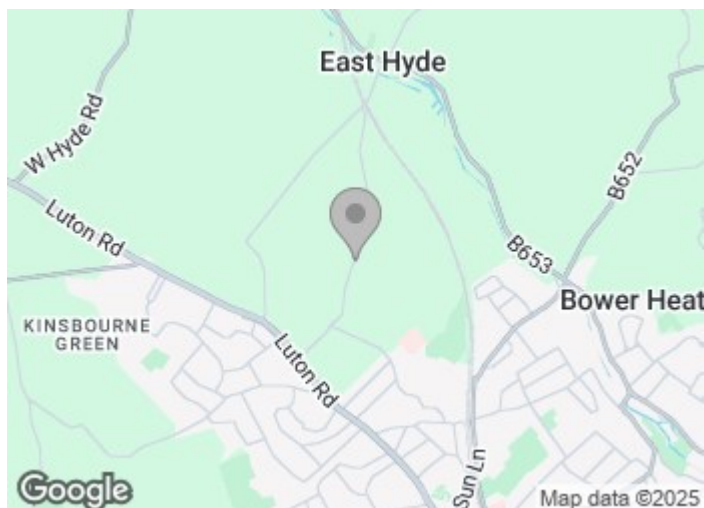
Family Bathroom

Garage

17'3" x 9'2" (5.27 x 2.8)

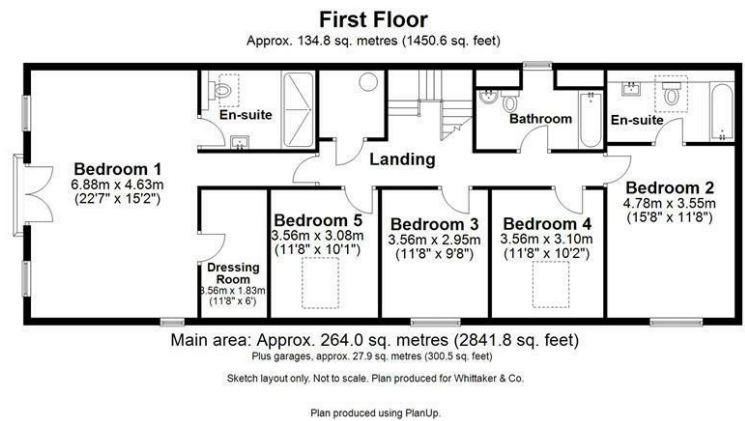
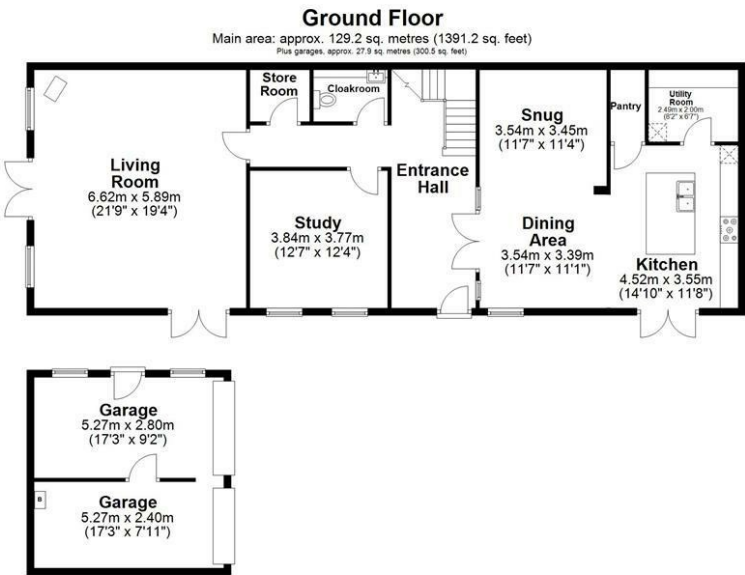
Garage

17'3" x 7'10" (5.27 x 2.4)





Floor Plan



These particulars, whilst believed to be accurate are set out as a general outline only for guidance and do not constitute any part of an offer or contract. Intending purchasers should not rely on them as statements of representation of fact, but must satisfy themselves by inspection or otherwise as to their accuracy. No person in this firms employment has the authority to make or give any representation or warranty in respect of the property.

