



Barley Rise

Harpenden, AL5 5JJ

This two bedroom home forming part of a small development on the North East side of Harpenden offers fantastic scope for refurbishment and improvement. The property is perfect for first time homeowners, downsizers, small families or investors and features 2 double bedrooms as well as a West facing private rear garden, eight solar panels and allocated parking. Well placed for schooling, close to beautiful open countryside and within walking distance of the town centre and station. *Chain Free*

Guide price £375,000

Barley Rise

Harpenden, AL5 5JJ



- Two double bedroom home
- Chain-free
- Fitted with eight solar panels that save circa £600 PA
- Fantastic potential for refurbishment and improvement
- Close to outstanding primary and secondary schools
- Allocated parking space
- West facing Garden with stunning rural views
- Council tax band C

Entrance Hall

Kitchen

7'3" x 7'2" (2.21m x 2.20m)

Lounge/Dining Room

17'2" x 13'9" (5.25m x 4.20m)

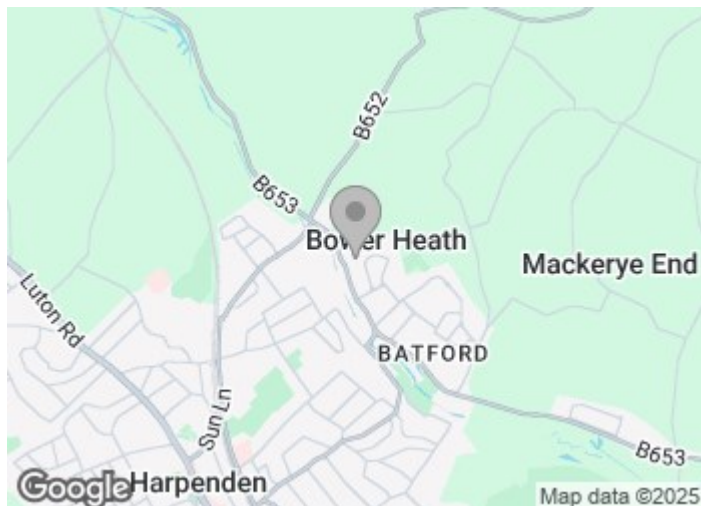
Bedroom One

13'9" x 10'9" (4.20m x 3.28m)

Bedroom Two

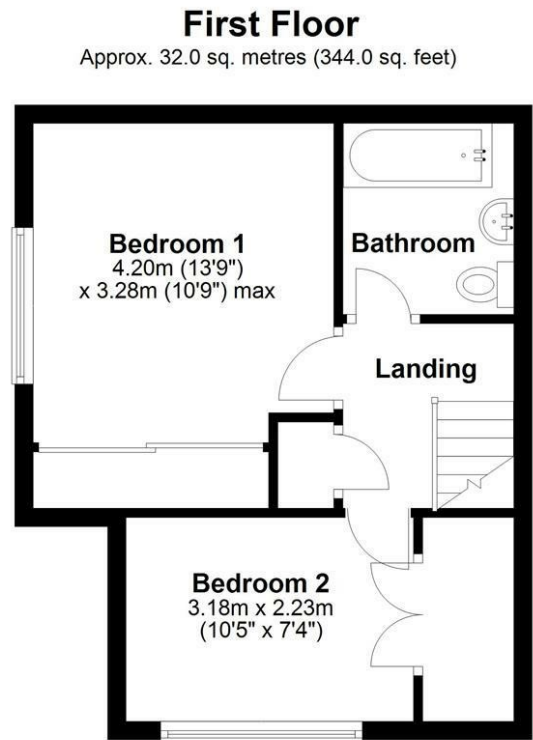
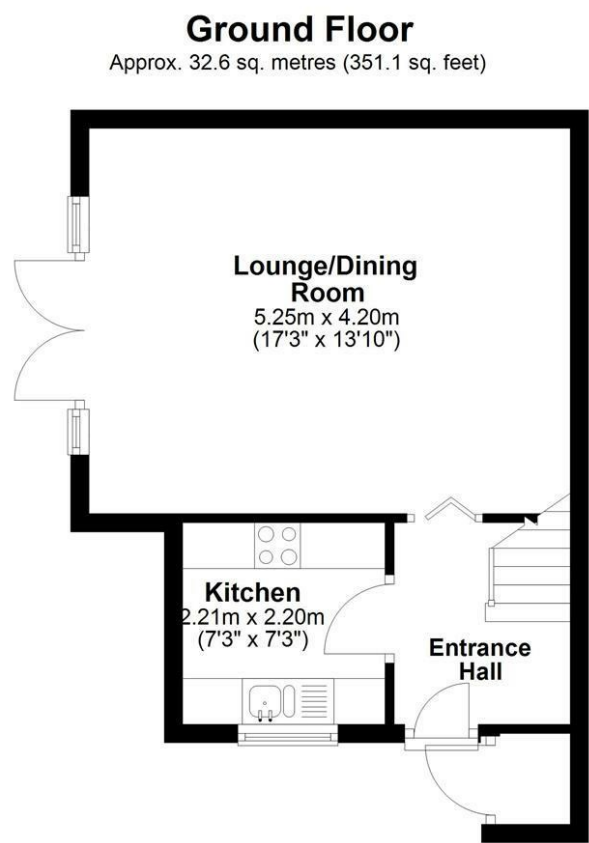
10'5" x 7'3" (3.18m x 2.23m)

Bathroom





Floor Plan



Total area: approx. 64.6 sq. metres (695.1 sq. feet)
Sketch layout only. Not to scale. Plan produced for Whittaker & Co.

Plan produced using PlanUp.

These particulars, whilst believed to be accurate are set out as a general outline only for guidance and do not constitute any part of an offer or contract. Intending purchasers should not rely on them as statements of representation of fact, but must satisfy themselves by inspection or otherwise as to their accuracy. No person in this firms employment has the authority to make or give any representation or warranty in respect of the property.

