



47 Luton Road

Harpenden, AL5 2UB

A good size family home of circa 1,500 sq ft offering well planned accommodation arranged over three floors. This fine 2 year old property is in a popular residential location, within walking distance of the station and town centre. * CHAIN FREE *

Guide price £875,000

47 Luton Road

Harpenden, AL5 2UB



- Good family accommodation over three floors
- Centrally located walking distance of town centre & station
- 2 year old property with 8 years left of New Homes guarantee
- Fitted Kitchen including fitted appliances
- Off-street parking
- Private rear garden
- Council Tax Band F
- CHAIN FREE

Entrance Hall

Kitchen/Dining/Family Room

19'8" x 14'1" (6m x 4.30m)

Family Room

12'9" x 10'7" (3.89m x 3.25m)

Cloakroom

Bedroom One

11'7" x 14'2" (3.54m x 4.34m)

En-suite Shower Room

Bedroom Four

12'1" x 9'5" (3.69m x 2.89m)

Bedroom Five

12'1" x 6'10" (3.69m x 2.09m)

Bathroom

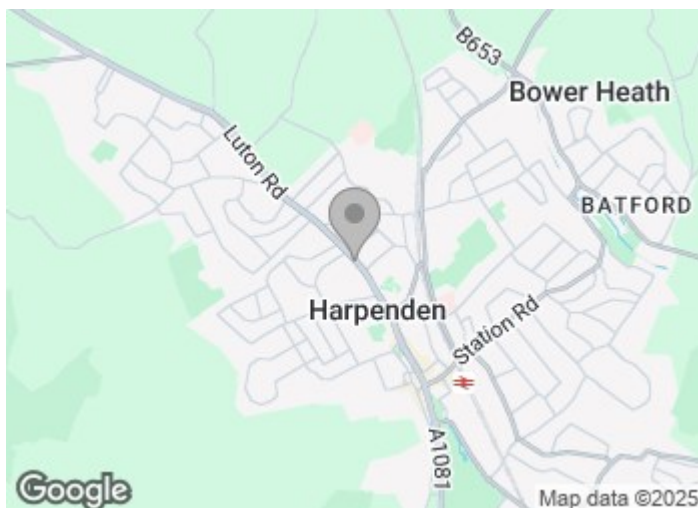
Bedroom Two

15'9" x 14'1" (4.82m x 4.30m)

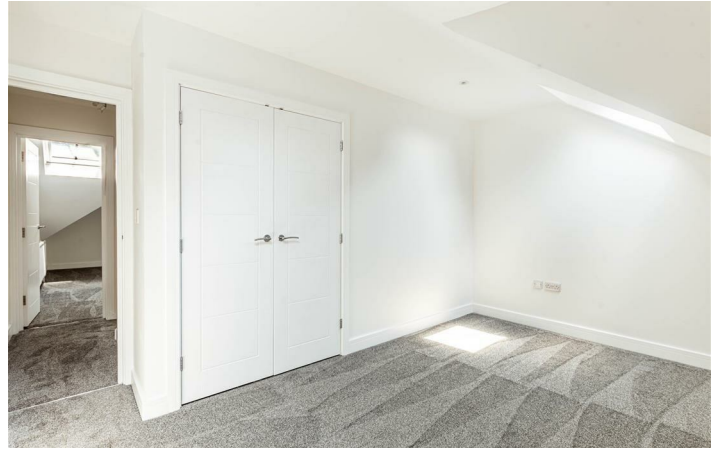
Bedroom Three

11'9" x 14'0" (3.59m x 4.29m)

Shower Room



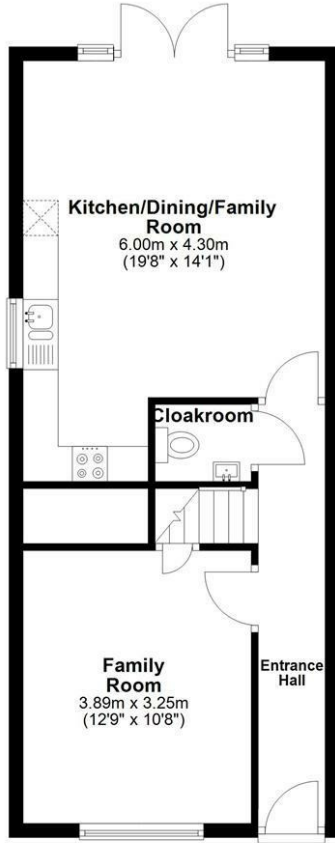
[Directions](#)



Floor Plan

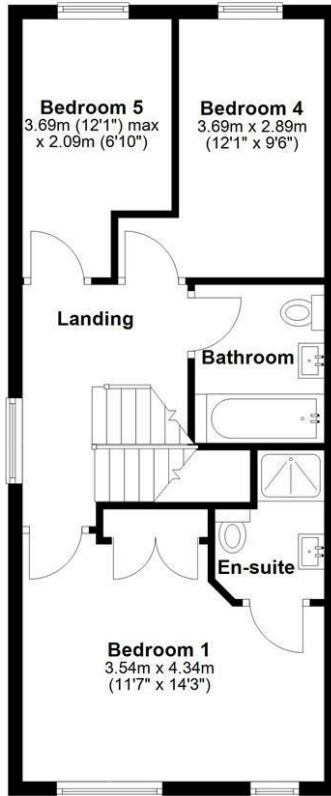
Ground Floor

Approx. 46.8 sq. metres (503.7 sq. feet)



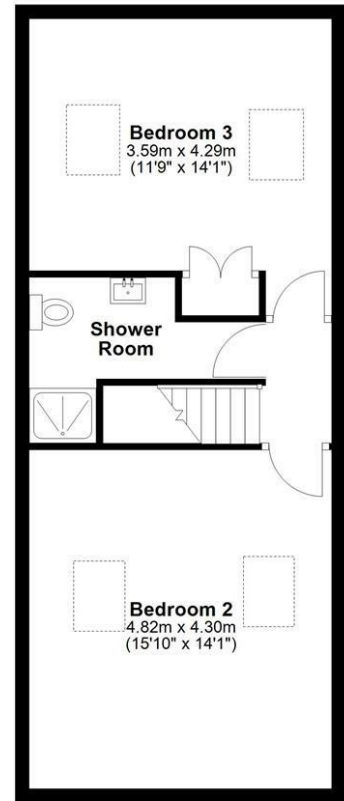
First Floor

Approx. 46.3 sq. metres (498.7 sq. feet)



Second Floor

Approx. 47.1 sq. metres (507.4 sq. feet)



Total area: approx. 140.3 sq. metres (1509.9 sq. feet)

Sketch layout only. Not to scale. Plan produced for Whittaker & Co.

Plan produced using PlanUp.

These particulars, whilst believed to be accurate are set out as a general outline only for guidance and do not constitute any part of an offer or contract. Intending purchasers should not rely on them as statements of representation of fact, but must satisfy themselves by inspection or otherwise as to their accuracy. No person in this firm's employment has the authority to make or give any representation or warranty in respect of the property.

