



Plot 2 Bibbs Hall Lane

Ayot St Lawrence, SG4 8EN

A beautifully crafted barn style new home with a stunning interior, forming part of an exclusive development in the grounds of Bibbs Hall Farm and surrounded by picturesque countryside on the border of Ayot St Lawrence. Elegantly styled and a 'no expense spared' approach to the finish, result in homes of exceptional quality. NOTE: Internal photographs of plot 2 and for guide only.

Guide price £1,895,000

Plot 2 Bibbs Hall Lane

Ayot St Lawrence, SG4 8EN



- Courtyard development of barn style homes with exceptional specifications
- Amazing triple aspect living room
- Surrounded by picturesque countryside and just a short stroll from the family focussed Cross Keys pub
- Beautiful fitted kitchen/dining/family room with Shaker-style Stonehouse kitchen, island, integrated appliances and adjoining utility room
- Double width garage and separate detached home office
- Kimpton shop/post office (1.7 miles), Wheathampstead shops & restaurants (2.5 miles)
- Superb principal bedroom with luxurious ensuite bathroom, 3 further bedrooms and 3 shower rooms
- Generously proportioned landscaped rear garden backing fields
- Comprehensive selection of shops, restaurants, bars and mainline station at Harpenden (5.5 miles)

GROUND FLOOR

Entrance Hall

Cloakroom

Living Room

25'7 x 18'5 (7.80m x 5.61m)

Kitchen/Dining/Family Room

47' x 14'1 (14.33m x 4.29m)

Utility Room

9'2 x 8'7 (2.79m x 2.62m)

Bedroom Four

18'8 x 16'1 (5.69m x 4.90m)

En Suite Shower Room

FIRST FLOOR

Landing

Principal Bedroom

18'5 x 16'6 (5.61m x 5.03m)

Walk-in Wardrobe

En-Suite Bathroom

Bedroom Two

13'4 x 12'7 (4.06m x 3.84m)

En-Suite Shower Room

Bedroom Three

13'4 x 12'7 (4.06m x 3.84m)

En-Suite Shower Room

EXTERNALLY

Generous Landscaped Gardens

Home Office

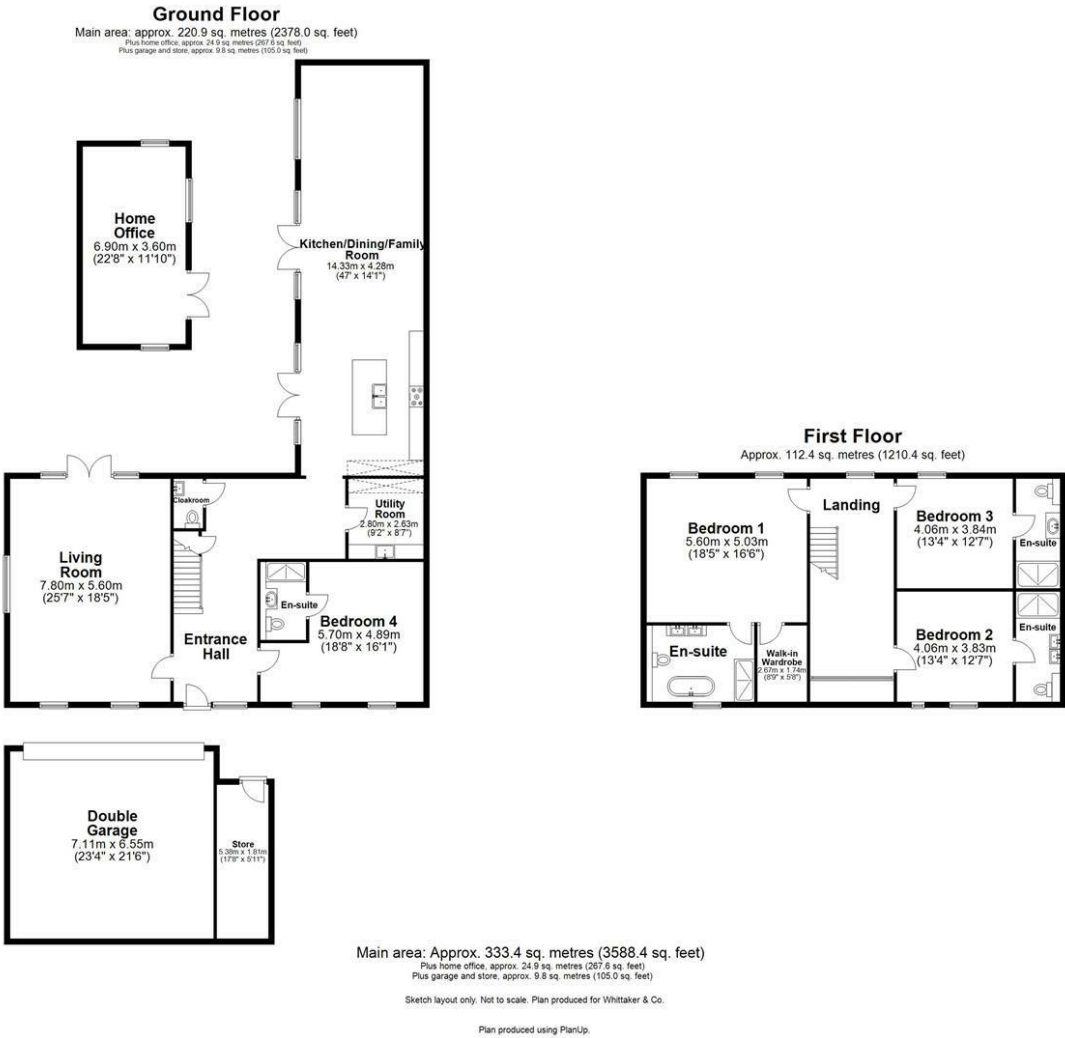
22'8 x 11'10 (6.91m x 3.61m)



[Directions](#)



Floor Plan



These particulars, whilst believed to be accurate are set out as a general outline only for guidance and do not constitute any part of an offer or contract. Intending purchasers should not rely on them as statements of representation of fact, but must satisfy themselves by inspection or otherwise as to their accuracy. No person in this firms employment has the authority to make or give any representation or warranty in respect of the property.

