



Kingcroft Road

Harpenden, AL5 1EH

A well maintained home with open plan living space and a south west facing garden. Kingcroft Road is close to the amenities of Southdown and within a short walk of Harpenden town centre and station. Well placed for schooling. Available from mid-May. ***NO PETS***

£1,895 Per month

Kingcroft Road

Harpenden, AL5 1EH



- End of terrace
- Three Bedrooms
- Short walk to Harpenden & station
- Open plan living space
- South west facing garden
- NO PETS
- Well maintained
- Close to amenities of Southdown

Entrance Hall

Lounge / Dining Room

20'3" x 11'10" (6.18 x 3.62)

Kitchen

11'8" x 5'8" (3.58 x 1.74)

Utility / Cloakroom

Bedroom One

11'10" (max) x 10'11" (3.61 (max) x 3.34)

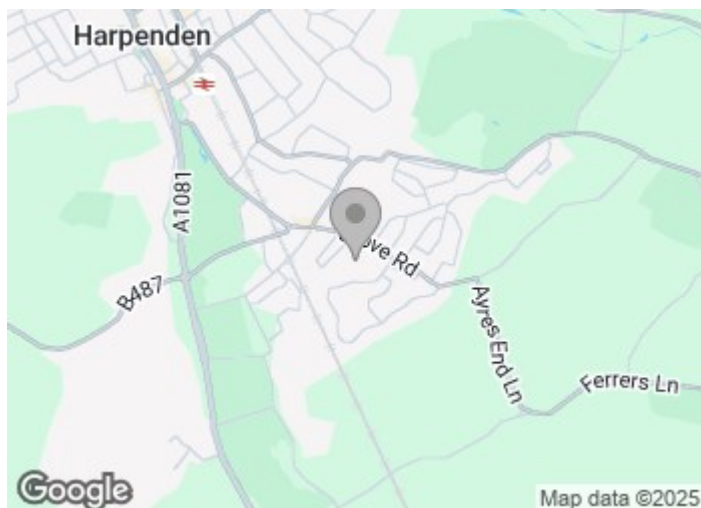
Bedroom Two

8'7" x 8'1" (2.62 x 2.47)

Bedroom Three

7'2" x 6'1" (2.19 x 1.87)

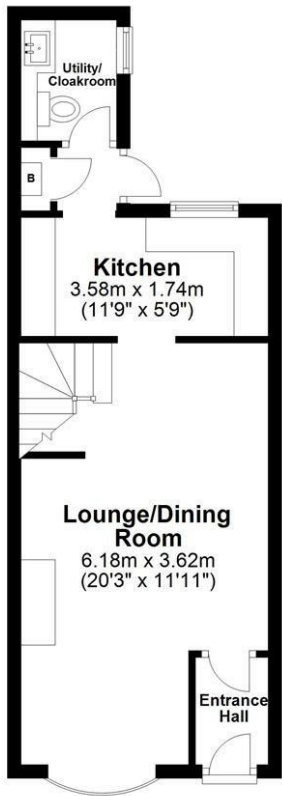
Family Bathroom





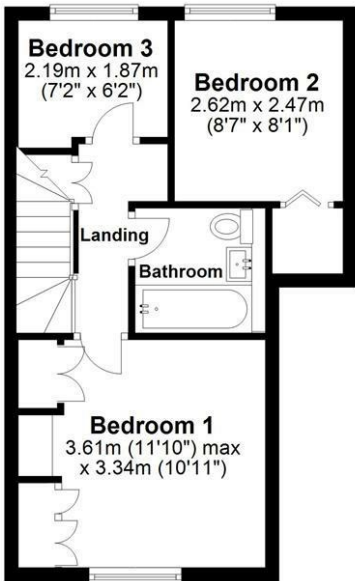
Ground Floor

Approx. 33.2 sq. metres (357.5 sq. feet)



First Floor

Approx. 33.1 sq. metres (356.8 sq. feet)



Total area: approx. 66.4 sq. metres (714.2 sq. feet)

Sketch layout only. Not to scale. Plan produced for Whittaker & Co.

Plan produced using PlanUp.

These particulars, whilst believed to be accurate are set out as a general outline only for guidance and do not constitute any part of an offer or contract. Intending purchasers should not rely on them as statements of representation of fact, but must satisfy themselves by inspection or otherwise as to their accuracy. No person in this firms employment has the authority to make or give any representation or warranty in respect of the property.

