



## Pendennis Court

Harpenden, AL5 1SG

Well presented family home with open plan living space and private garden of over 40 ft with south westerly aspect. Located in a quiet cul-de-sac close to open countryside, within a short walk of the amenities of Southdown, well placed for schooling and within easy reach of Harpenden town centre and station.

**Guide price £675,000**

# Pendennis Court

Harpenden, AL5 1SG



- Well presented three bedroom Semi detached
- Easy access to the amenities of Southdown
- Well placed for excellent schooling
- Over 1100 sq ft
- South westerly facing garden of over 40 ft
- Council Tax Band E
- Open plan living space
- Within easy reach of Harpenden town centre and station

## Porch

## Entrance Hall

## Study

9'3" x 6'9" (2.84m x 2.07m)

## Kitchen

9'11" x 7'4" (3.03m x 2.24m)

## Utility Room

7'11" x 6'2" (2.42m x 1.90m)

## Lounge/Dining Room

18'10" x 17'5" (5.76m x 5.32m)

## Bedroom One

10'1" x 6'6" (3.09m x 2m)

## En-suite Shower

## Bedroom Two

11'6" x 9'6" (3.52m x 2.90m)

## Bedroom Three

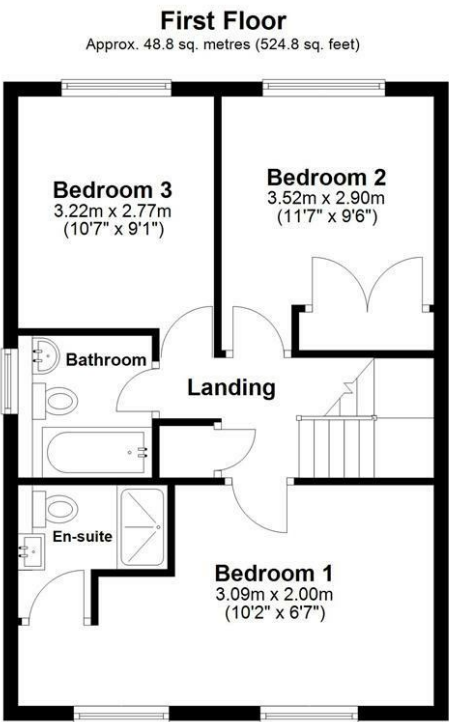
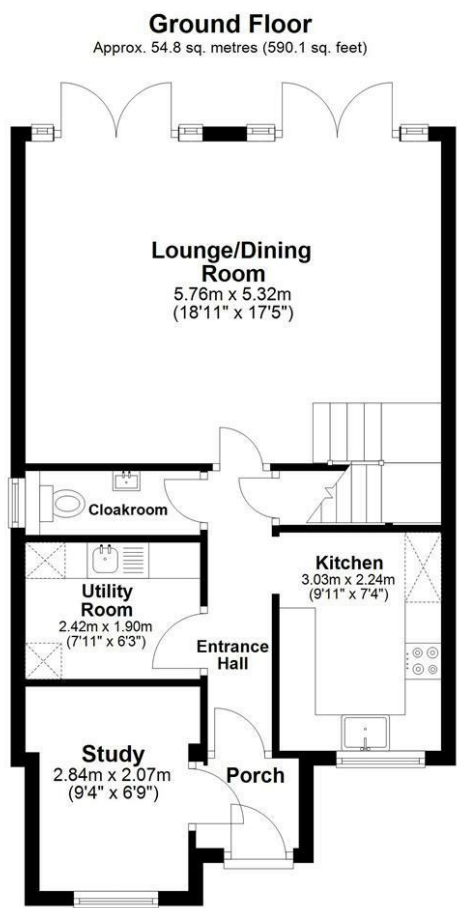
10'6" x 9'1" (3.22m x 2.77m)

## Bathroom





Floor Plan



Total area: approx. 103.6 sq. metres (1115.0 sq. feet)  
Sketch layout only. Not to scale. Plan produced for Whittaker & Co.

Plan produced using PlanUp.

These particulars, whilst believed to be accurate are set out as a general outline only for guidance and do not constitute any part of an offer or contract. Intending purchasers should not rely on them as statements of representation of fact, but must satisfy themselves by inspection or otherwise as to their accuracy. No person in this firms employment has the authority to make or give any representation or warranty in respect of the property.

