



Eastmoor Park

Harpenden, AL5 1BP

Beautifully presented family home of circa 1,860 sq ft with versatile and spacious accommodation. Set on a generous plot of 0.21 acres with a 90ft garden and integral garage. Eastmoor Park is a popular location, close to the amenities of Southdown, the Common and excellent schooling. Walking distance to Harpenden town centre and station.

Guide price £1,250,000

Eastmoor Park

Harpenden, AL5 1BP



- Fabulous family home circa 1,860 sq ft
- 90ft garden
- Walking distance to the amenities of Southdown
- Spacious and versatile accommodation
- Integral garage and driveway for several cars
- Easy access to The Common
- Generous plot of 0.21 acres
- Close to excellent schooling
- Council Tax Band G

Porch

Study

11'6" x 9'3" (3.53 x 2.82)

Inner Hall

9'8" x 6'9" (2.96 x 2.06)

Playroom

11'6" x 8'8" (3.53 x 2.65)

Kitchen/Dining/Living Room

32'6" x 13'2" (9.91 x 4.03)

Cloakroom

Utility Room

Bedroom One

13'5" x 9'8" (4.09 x 2.96)

Dressing Room

9'8" x 6'3" (2.97 x 1.91)

En-suite Shower Room

Bedroom Two

11'0" x 10'9" (3.37 x 3.30)

Bedroom Three

11'2" x 10'1" (3.42 x 3.08)

Bedroom Four

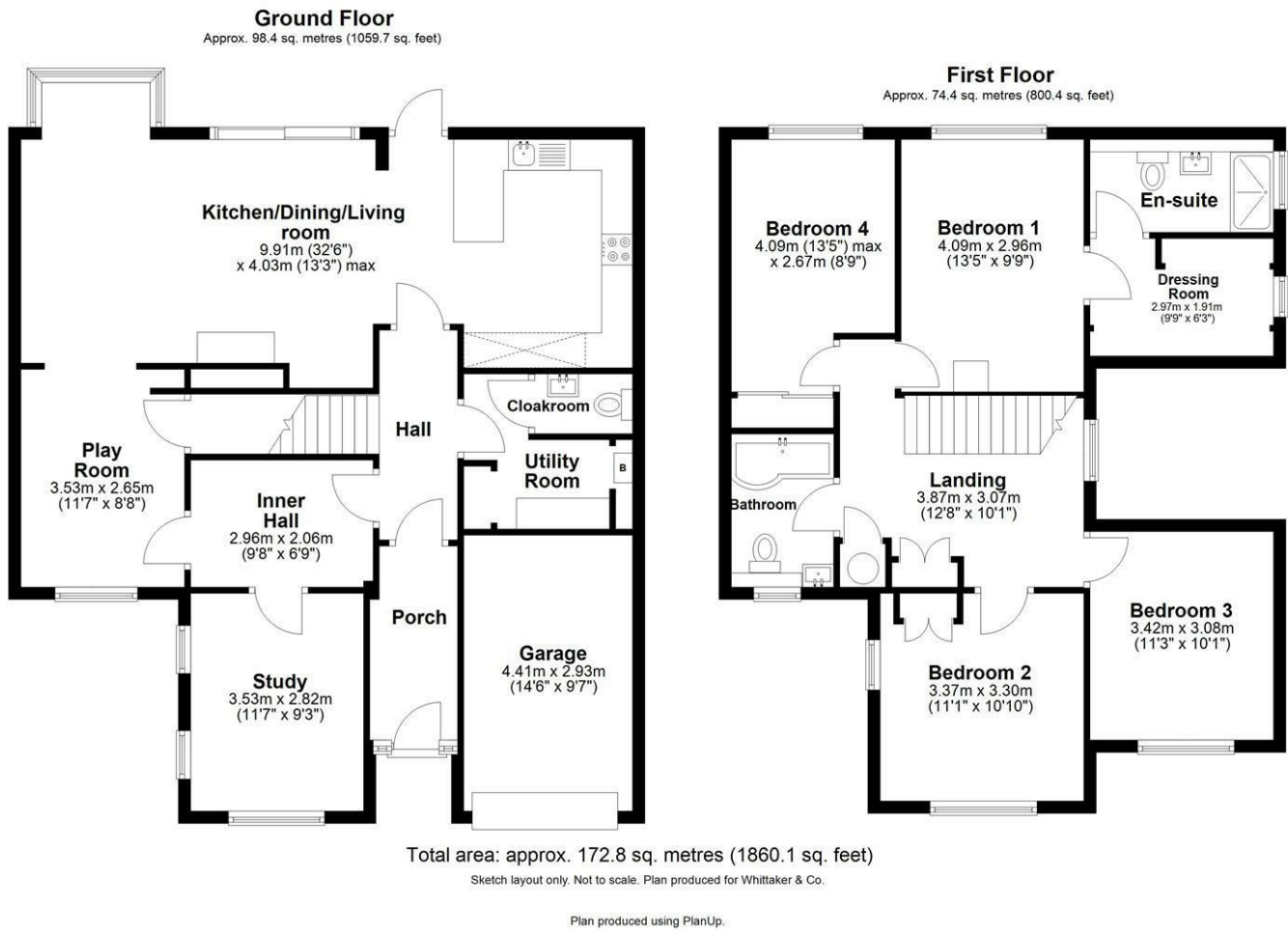
13'5" x 8'9" (4.09 x 2.67)

Family Bathroom





Floor Plan



These particulars, whilst believed to be accurate are set out as a general outline only for guidance and do not constitute any part of an offer or contract. Intending purchasers should not rely on them as statements of representation of fact, but must satisfy themselves by inspection or otherwise as to their accuracy. No person in this firms employment has the authority to make or give any representation or warranty in respect of the property.

