



## Cravells Road

Harpenden, AL5 1BA

Beautifully presented period home extended and renovated by our client with a double Reception Room and open plan Kitchen, backing onto the 130 ft private garden (westerly aspect). This ever popular location is moments from the amenities of Southdown, close to The Common and within a short walk of the town centre and station.

**Guide price £650,000**

# Cravells Road

## Harpenden, AL5 1BA



- Beautiful period home
- In excess of 1,000 sq ft
- Close to The Common
- Two reception and open plan Kitchen/Family Room
- 130 ft private garden (westerly aspect)
- Short walk to the town centre and station
- Potential to convert loft STPP
- Moments from the amenities of Southdown
- Council Tax Band E

### Hall

### Living Hall

13'5" x 10'5" (4.10m x 3.18m)

### Dining Room

11'9" x 10'6" (3.60m x 3.22m)

### Kitchen/Family

17'7" x 12'11" (5.37m x 3.94m)

### Utility/Cloakroom

7'8" x 7'3" (2.36m x 2.23m)

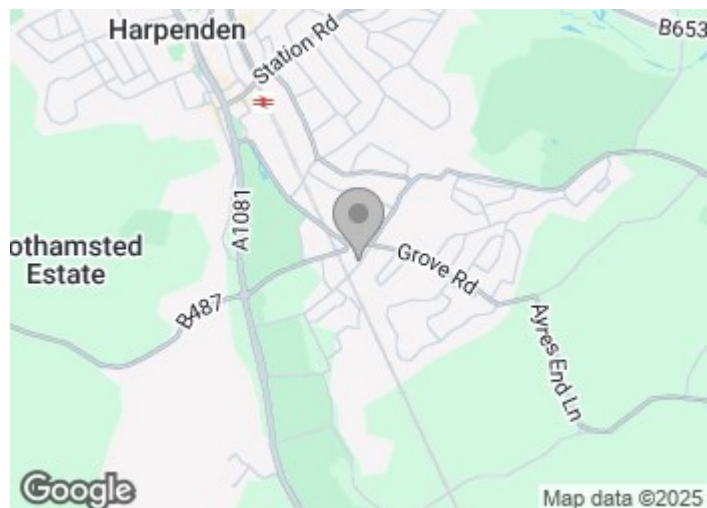
### Bedroom One

11'11" x 13'7" (3.65m x 4.16m)

### Bedroom Two

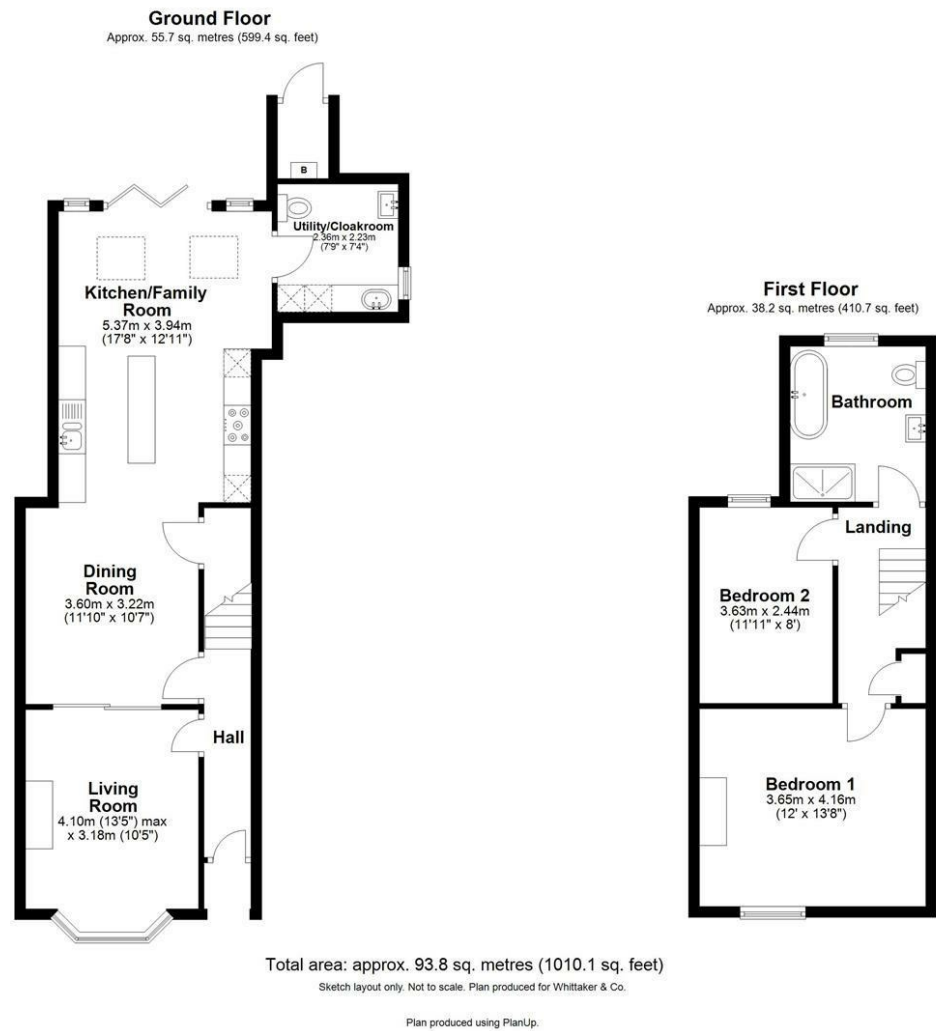
11'10" x 8'0" (3.63m x 2.44m)

### Bathroom





Floor Plan



These particulars, whilst believed to be accurate are set out as a general outline only for guidance and do not constitute any part of an offer or contract. Intending purchasers should not rely on them as statements of representation of fact, but must satisfy themselves by inspection or otherwise as to their accuracy. No person in this firms employment has the authority to make or give any representation or warranty in respect of the property.

