



Coldharbour Lane

Harpenden, AL5 4NF

Recently refurbished, this beautifully presented family home has open plan living and a fabulous 80ft West facing garden. Coldharbour Lane is moments from beautiful open countryside and within walking distance of Harpenden town centre and station.

Offers in excess of £800,000

Coldharbour Lane

Harpenden, AL5 4NF



- Period cottage in excellent condition
- 80ft west facing garden
- Walking distance to Harpenden town centre and station.
- Open Plan living
- Close to open countryside
- Off street parking
- Peaceful location

Entrance Hall

Living Room

21'1" x 11'6" (6.43m x 3.51m)

Kitchen/Dining Room

16'8" x 16'2" (5.10m x 4.95m)

Utility Room

8'0" x 6'8" (2.44m x 2.05m)

Bedroom One

13'1" x 9'11" (4m x 3.03m)

En-Suite Shower Room

Bedroom Two

11'7" x 11'2" (3.55m x 3.41m)

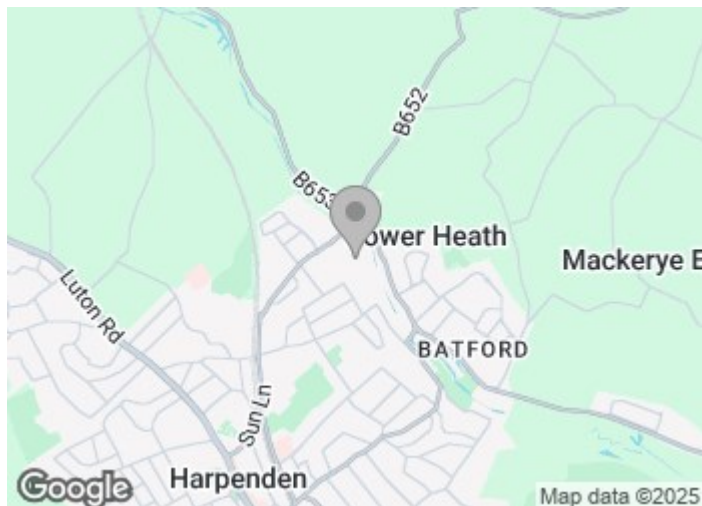
Bedroom Three

9'11" x 8'8" (3.03m x 2.66m)

Bedroom Four

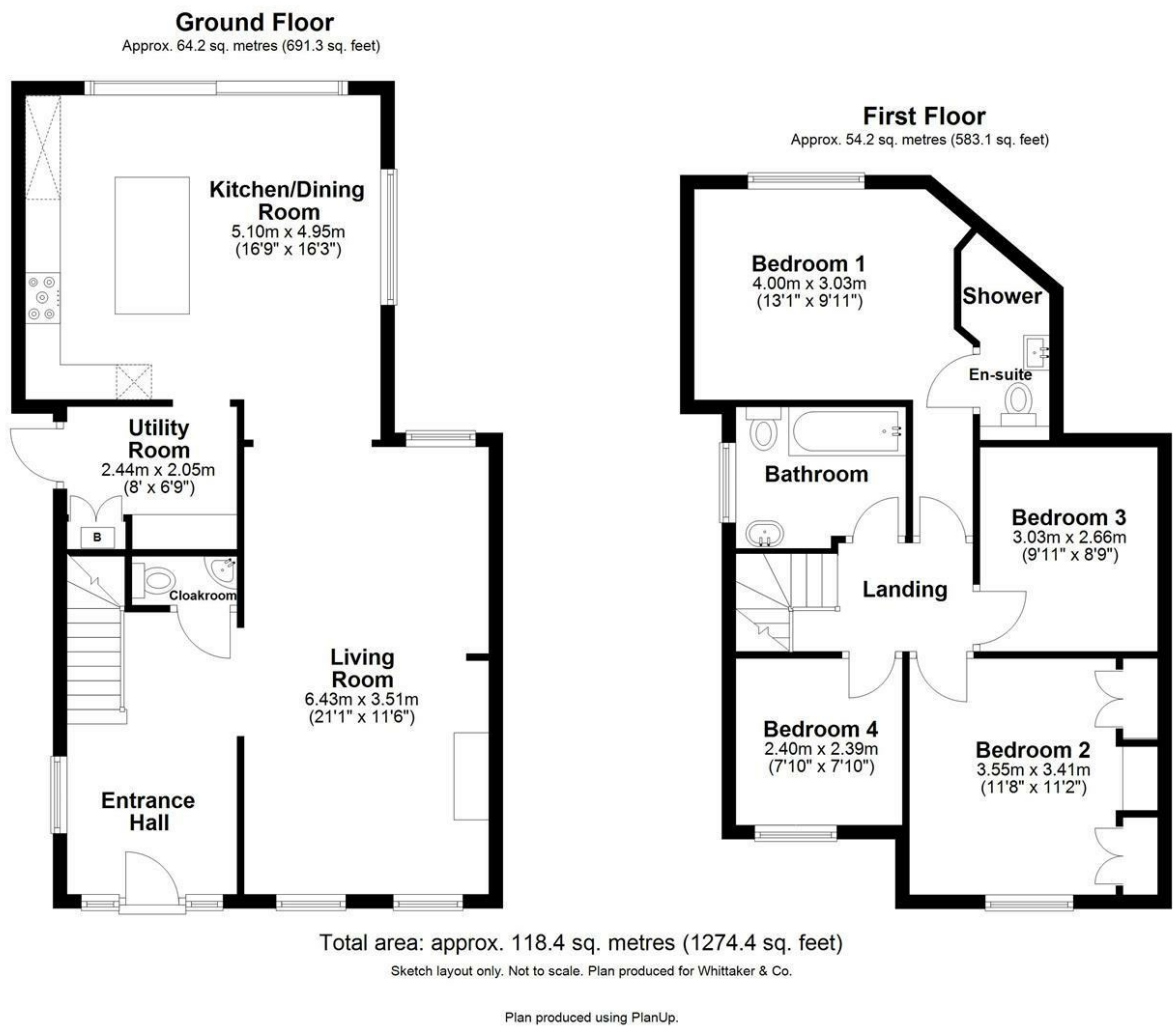
7'10" x 7'10" (2.40m x 2.39m)

Bathroom





Floor Plan



These particulars, whilst believed to be accurate are set out as a general outline only for guidance and do not constitute any part of an offer or contract. Intending purchasers should not rely on them as statements of representation of fact, but must satisfy themselves by inspection or otherwise as to their accuracy. No person in this firms employment has the authority to make or give any representation or warranty in respect of the property.

