



## 294 Lower Luton Road

Wheathampstead, AL4 8HT

A beautiful detached bungalow with an accommodation that has been extended and remodelled to create a contemporary, versatile living space that will appeal to all age groups. Notable features include a stunning living/kitchen/dining room, incorporating a well fitted kitchen and glass Bi-Fold doors to the well proportioned garden.

**Guide price £780,000**

# 294 Lower Luton Road

## Wheathampstead, AL4 8HT



- A well presented detached bungalow with a superb extension
- Spacious main bedroom with tasteful en suite bathroom
- Well proportioned rear garden 92 feet deep
- Impressive open plan kitchen/dining/family room with a part vaulted ceiling and Bi-fold doors to the rear
- Three further bedrooms and a beautiful family bathroom
- Tesco Express (1.1 miles), Katherine Warrington Secondary School (0.8 mile), Harpenden Station (2.2 miles)
- Stunning kitchen area with quartz work surfaces and adjoining utility room
- Parking to the front and side of the bungalow, together with an integral bike store

### INTERIOR

#### Entrance Hall

#### Kitchen/Dining/Family Room

24'5 x 21'11 (7.44m x 6.68m)

#### Utility Room

6'11 x 5'5 (2.11m x 1.65m)

#### Study/Bedroom Four

15'1 x 7' (4.60m x 2.13m)

#### Main Bedroom

13'8 x 12'5 (4.17m x 3.78m)

#### En Suite Bathroom

#### Bedroom Two

10'5 x 9'2 (3.18m x 2.79m)

#### Bedroom Three

9'1 x 9'1 (2.77m x 2.77m)

#### Family Bathroom

### EXTERNALLY

#### Bike Store

8'4 x 7'10 (2.54m x 2.39m)

#### Driveway Parking to Front & Side

#### Rear garden

92' in depth (28.04m in depth)

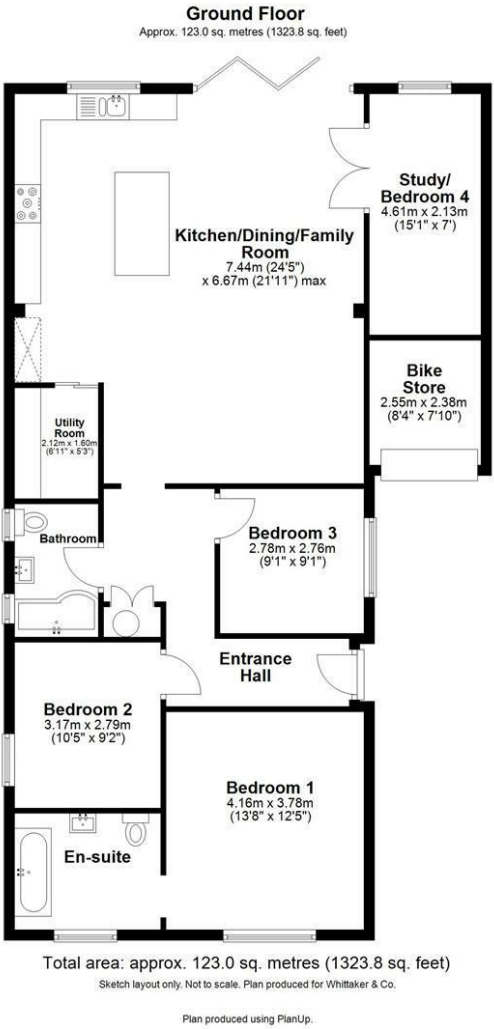


#### Directions





Floor Plan



These particulars, whilst believed to be accurate are set out as a general outline only for guidance and do not constitute any part of an offer or contract. Intending purchasers should not rely on them as statements of representation of fact, but must satisfy themselves by inspection or otherwise as to their accuracy. No person in this firms employment has the authority to make or give any representation or warranty in respect of the property.

