



25 Sauncey Avenue

Harpenden, AL5 4QR

An exquisite brand-new luxury five-bedroom detached home located on one of Harpenden's most sought-after, tree-lined avenues. Henry House has been architecturally considered to create a home of true quality, beauty, and craftsmanship. The design perfectly balances traditional with contemporary to stunning effect, resulting in a stylish yet highly functional residence that epitomises this developer's philosophy of 'inspiring spaces for better living'.

Guide price £1,550,000

25 Sauncey Avenue

Harpenden, AL5 4QR



- A beautifully designed kitchen with stone worktops, pantry and 'secret utility room'
- A spectacular boutique hotel-style master
- Off-street parking for up to 3 vehicles
- 10 Year New-build warranty
- Modern appliances, and a wealth of intelligent storage options
- Electric vehicle charging point
- Beautifully landscaped rear garden
- Underfloor heating throughout the ground floor
- Energy efficient Air Source Heat Pump
- Garden room with separate external storage

Entrance Hall

Cloakroom

Living Room

12'3" x 12'1" (3.74 x 3.70)

Kitchen/Dining/Family Room

22'5" x 20'4" (6.84 x 6.20)

Utility Room

7'10" x 5'2" (2.41 x 1.58)

Bedroom Two

12'5" x 12'1" (3.81 x 3.70)

En suite Shower Room

Dressing Room

Bedroom Three

12'8" x 10'8" (3.87 x 3.27)

Bedroom Four

12'8" x 9'3" (3.87 x 2.83)

Family Bathroom

Bedroom One

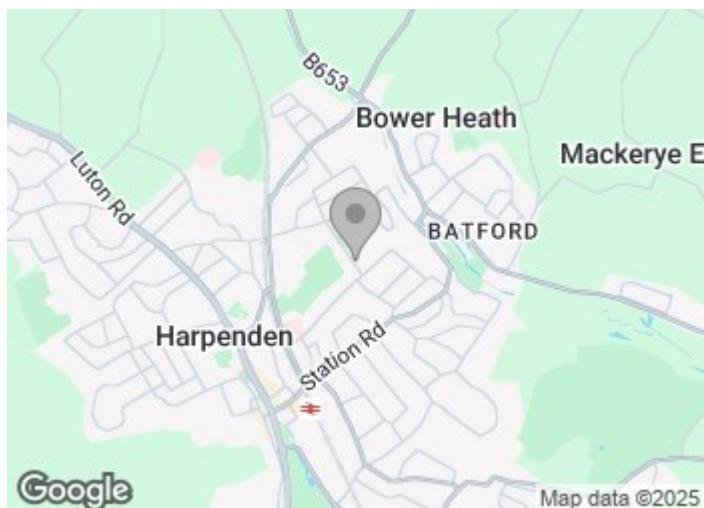
24'0" x 9'4" (7.32 x 2.86)

En suite Shower Room

Walk in Wardrobe

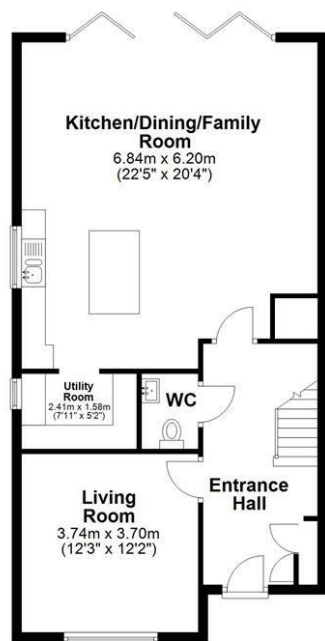
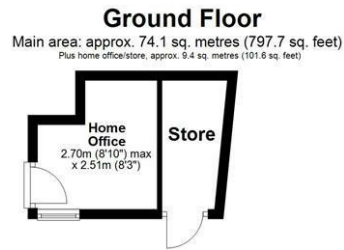
Home Office

8'10" x 8'2" (2.7 x 2.51)

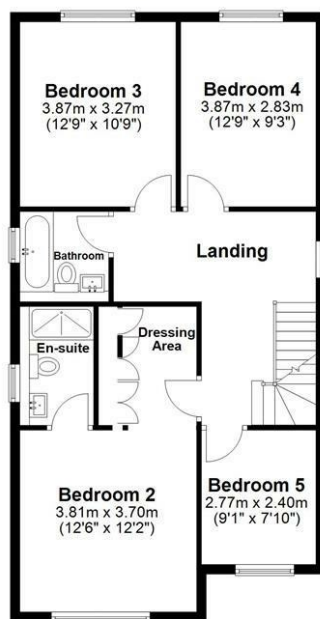




Floor Plan



First Floor
Approx. 74.0 sq. metres (796.6 sq. feet)



Main area: Approx. 186.9 sq. metres (2011.8 sq. feet)
Plus home office/store, approx. 9.4 sq. metres (101.6 sq. feet)

Sketch layout only. Not to scale. Plan produced for Whittaker & Co.

Plan produced using PlanUp.

Second Floor
Approx. 38.8 sq. metres (417.5 sq. feet)



These particulars, whilst believed to be accurate are set out as a general outline only for guidance and do not constitute any part of an offer or contract. Intending purchasers should not rely on them as statements of representation of fact, but must satisfy themselves by inspection or otherwise as to their accuracy. No person in this firms employment has the authority to make or give any representation or warranty in respect of the property.

