



Southdown Road

Harpenden, AL5 1QQ

Charming - and deceptively spacious - three bedroom, period cottage with a private 60ft south facing garden and courtyard. Moments from the amenities of Southdown and the Common. Short walk to the town centre and station. ****CHAIN FREE****

£650,000

Southdown Road

Harpenden, AL5 1QQ



- Extremely well presented
- Private south facing garden
- Period cottage
- Close to amenities of Southdown
- Two bathrooms
- Short walk to station & town centre

Living Room

20'10" x 11'1" (6.36m x 3.40m)

Kitchen/Breakfast Room

19'9" x 6'0" (6.02m x 1.85m)

Shower Room

Bedroom Two

13'10" x 6'4" (4.24m x 1.94m)

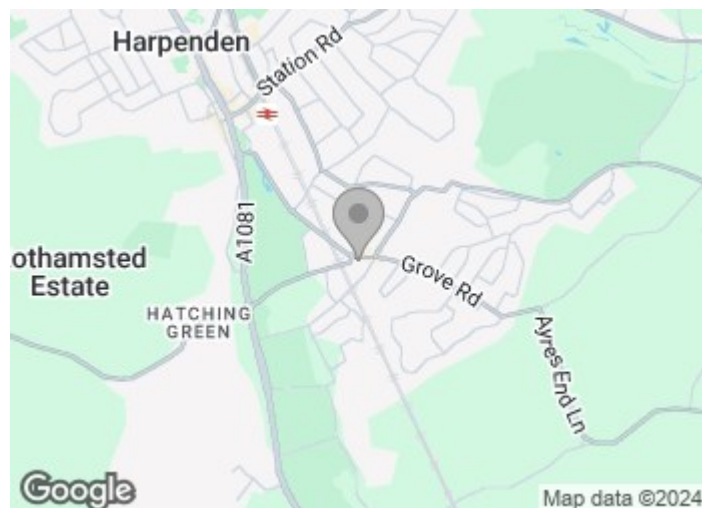
Bedroom One

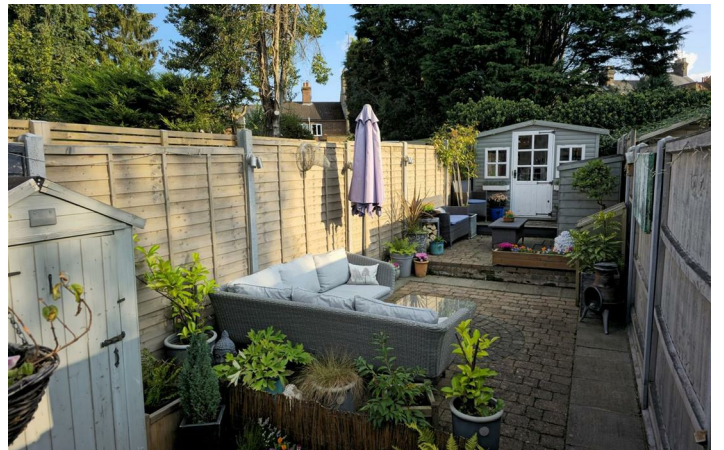
11'11" x 11'1" (3.64m x 3.40m)

Study/Bedroom Three

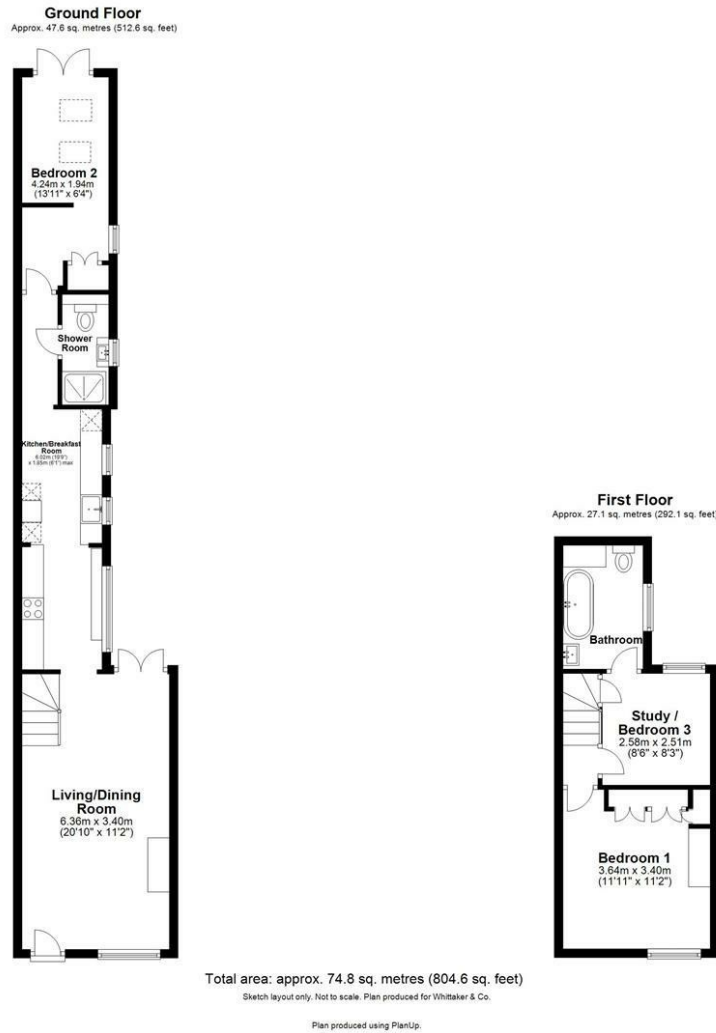
8'5" x 8'2" (2.58m x 2.51m)

Bathroom





Floor Plan



These particulars, whilst believed to be accurate are set out as a general outline only for guidance and do not constitute any part of an offer or contract. Intending purchasers should not rely on them as statements of representation of fact, but must satisfy themselves by inspection or otherwise as to their accuracy. No person in this firm's employment has the authority to make or give any representation or warranty in respect of the property.

