



Tuffnells Way Harpenden, AL5 3HA

Well presented Bungalow offering great accommodation of over 1100 sq ft. Located in a quiet residential area, ideally located for schools. Offering a mature south west facing 60ft garden with a double garage.
****CHAIN FREE****

Guide price £895,000

Tuffnells Way

Harpenden, AL5 3HA



- Spacious Bungalow
- Well presented
- Over 1100 sq ft
- 60 ft South West facing garden
- Double Garage
- Peaceful location
- Well located for schools

Entrance Hall

Kitchen

11'6" x 8'8" (3.53m x 2.65m)

Dining Room

10'8" x 8'9" (3.27m x 2.68m)

Living Room

14'9" x 14'1" (4.52m x 4.31m)

Bedroom One

15'5" x 12'10" (4.7m x 3.93m)

Ensuite Shower Room

Bedroom Two

13'1" x 11'4" (4m x 3.46m)

Shower Room

Utility Room

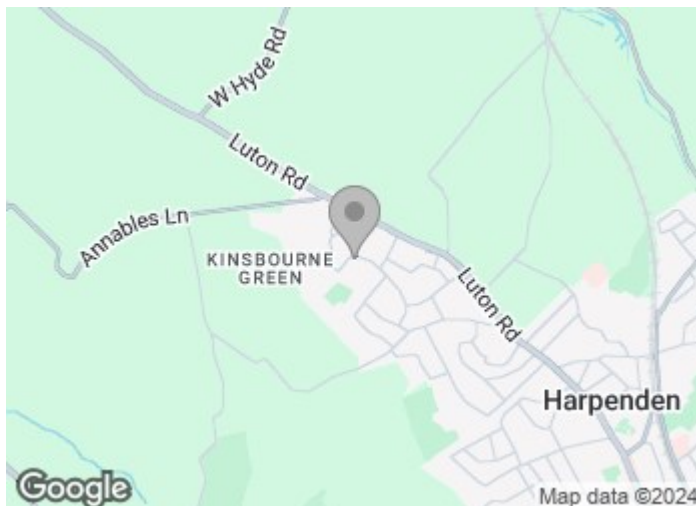
9'10" x 4'11" (3m x 1.50m)

Bedroom Three

11'4" x 11'0" (3.46m x 3.37m)

Double Garage

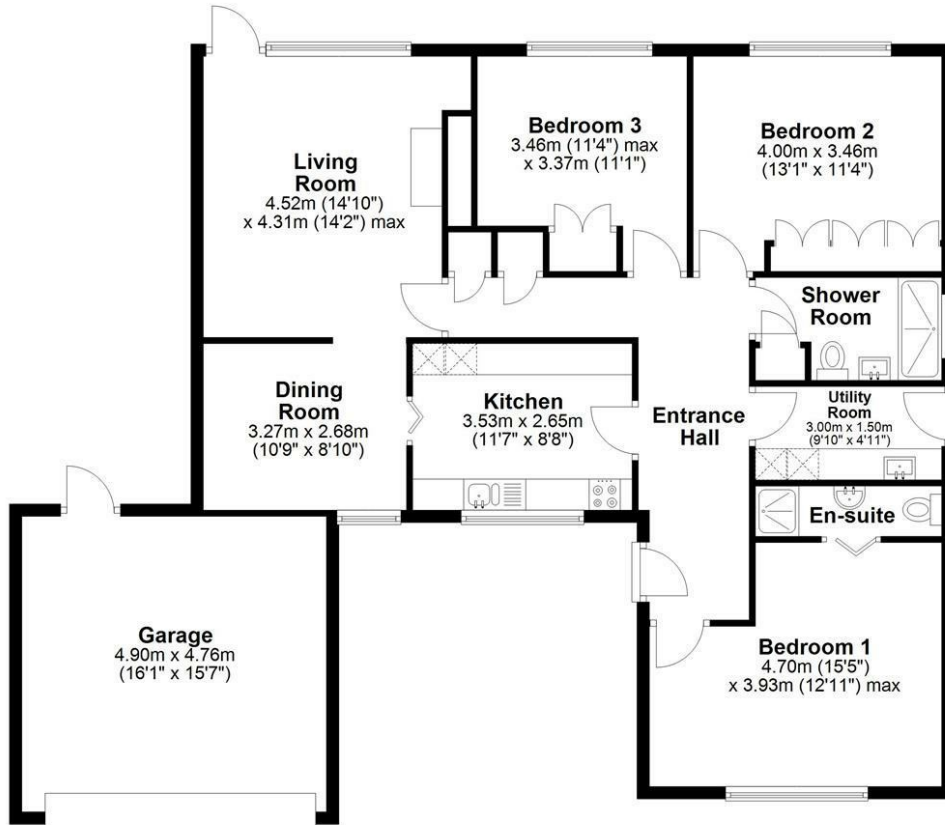
16'0" x 15'7" (4.9m x 4.76m)





Ground Floor

Main area: approx. 107.6 sq. metres (1158.2 sq. feet)
Plus garage, approx. 23.3 sq. metres (251.0 sq. feet)



Main area: Approx. 107.6 sq. metres (1158.2 sq. feet)
Plus garage, approx. 23.3 sq. metres (251.0 sq. feet)

Sketch layout only. Not to scale. Plan produced for Whittaker & Co.

Plan produced using PlanUp.

These particulars, whilst believed to be accurate are set out as a general outline only for guidance and do not constitute any part of an offer or contract. Intending purchasers should not rely on them as statements of representation of fact, but must satisfy themselves by inspection or otherwise as to their accuracy. No person in this firm's employment has the authority to make or give any representation or warranty in respect of the property.

