



## 18 Bury Green

Wheathampstead, AL4 8DD

This exceptional family home has benefitted from skilful extension and remodelling of the interior. Notable features include a superb open plan Kitchen/Dining/Family room with an outlook over landscaped gardens, a beautiful en-suite shower room and a stylish family bathroom. The property is conveniently located a short walk from the High Street amenities that include shops, bars and restaurants. This is one of the best examples that I have seen.

**Guide price £1,095,000**

# 18 Bury Green

Wheathampstead, AL4 8DD



4



2



3



D

- A particularly impressive family home with tastefully styled accommodation
- Excellent master bedroom with fitted wardrobes and en suite bathroom
- 3 further double bedrooms and family bathroom
- Super kitchen/dining/family room with underfloor heating beneath oak herringbone floor
- Cloakroom WC and utility room
- Landscaped gardens with irrigation, car port, store and paved drive
- Kitchen features: Island unit with breakfast bar, twin ovens, fridge and freezer, induction hob and dishwasher. Quartz work surfaces
- Sitting room and separate study
- Katherine Warington secondary school (2.3 miles), Harpenden Station (3.3 miles)

## GROUND FLOOR

Entrance Hall

Cloakroom WC

Sitting Room

14'3" x 12' (4.34m x 3.66m)

Kitchen/Dining/Family Room

28'1" max x 20'9" max (8.56m max x 6.32m max)

Snug

8'11" x 6'10" (2.72m x 2.08m)

Utility Room

Study

9'11" x 7'11" (3.02m x 2.41m)

## FIRST FLOOR

## Landing

Master Bedroom

15'1" x 14'10" (4.60m x 4.52m)

En Suite Bathroom

Bedroom Two

12'1" x 8'10" (3.68m x 2.69m)

Bedroom Three

10'4" x 9'7" (3.15m x 2.92m)

Bedroom Four

9'11" x 8' (3.02m x 2.44m)

Family Bathroom

## EXTERNALLY

Car Port

## Integral Store

8'3" x 6'10" (2.51m x 2.08m)

Paved Drive

Front Garden

Rear Garden

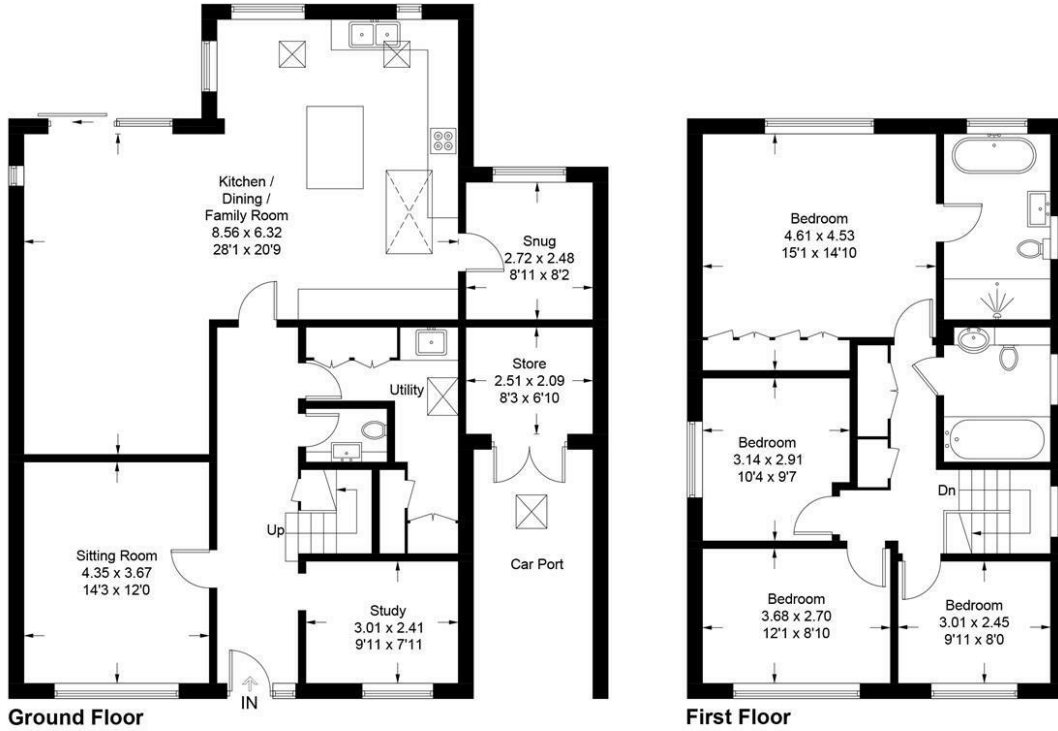


[Directions](#)



## Bury Green

Approximate Gross Internal Area = 184.7 sq m / 1988 sq ft  
 Store = 5.5 sq m / 59 sq ft  
 Total = 190.2 sq m / 2047 sq ft  
 (Excluding Car Port)



This plan is for layout guidance only. Not drawn to scale unless stated. Windows and door openings are approximate. Whilst every care is taken in the preparation of this plan, please check all dimensions, shapes and compass bearings before making any decisions reliant upon them. (ID1123998)

These particulars, whilst believed to be accurate are set out as a general outline only for guidance and do not constitute any part of an offer or contract. Intending purchasers should not rely on them as statements of representation of fact, but must satisfy themselves by inspection or otherwise as to their accuracy. No person in this firm's employment has the authority to make or give any representation or warranty in respect of the property.

