



Ox Lane

Harpenden, AL5 4PW

Built in 2015, this stunning family home of circa 2,125 sq ft has plenty of living and entertaining space, including a large open plan Kitchen / Dining Room opening onto the 55 ft south facing garden. This ever popular location is ideally placed for schooling and within a short walk of the town centre and station.

Guide price £1,495,000

Ox Lane

Harpenden, AL5 4PW



- Circa 2,125 sq ft
- Garden 55 ft, south facing
- Walking distance to town centre & station
- Open plan Kitchen / Dining Room
- Garage & off-street parking
- Well proportioned rooms
- Ideally located for schooling

Entrance Hall

Living Room

17'3" x 13'3" (5.26 x 4.05)

Kitchen / Dining Room

Family Room

Utility Room

13'1" x 5'5" (3.99 x 1.66)

Cloakroom

Bedroom One

18'6" (max) x 13'3" (max) (5.65 (max) x 4.05 (max))

En-suite Shower Room

Bedroom Two

13'5" x 13'2" (4.11 x 4.03)

Bedroom Three

13'5" x 13'3" (max) (4.10 x 4.05 (max))

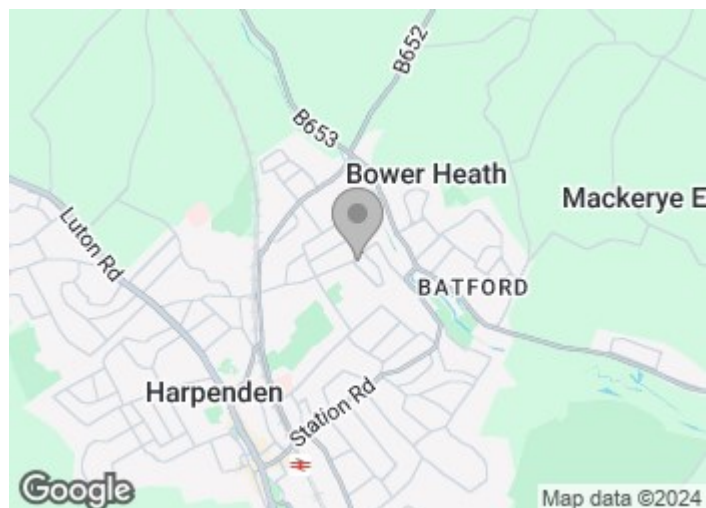
Bedroom Four

13'2" x 11'10" (4.03 x 3.62)

Family Bathroom

Integral Garage

15'8" x 12'9" (4.80 x 3.90)

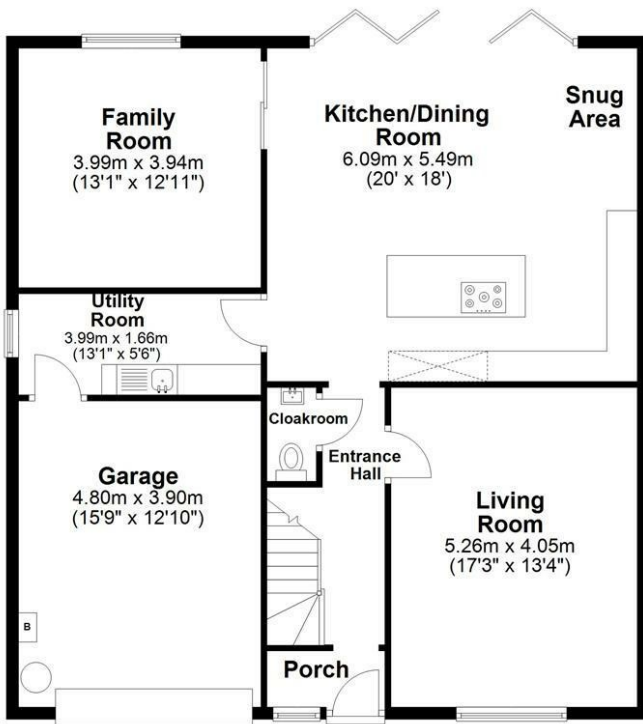




Floor Plan

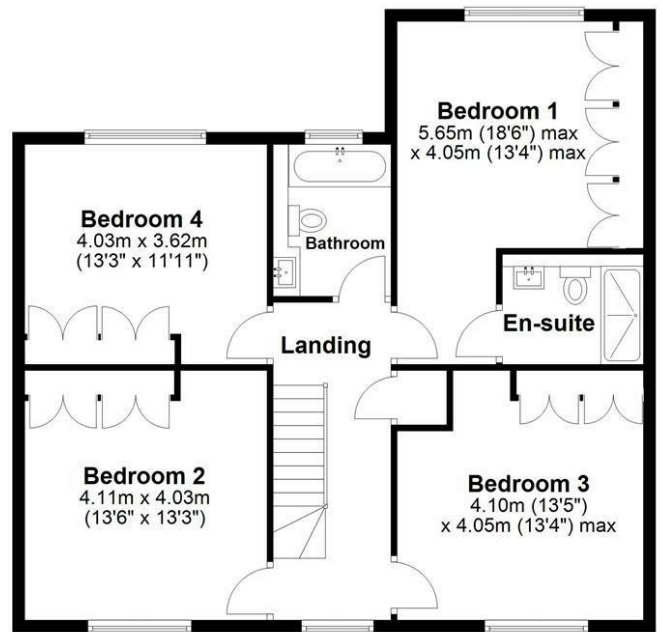
Ground Floor

Approx. 109.0 sq. metres (1173.4 sq. feet)



First Floor

Approx. 88.2 sq. metres (949.7 sq. feet)



Total area: approx. 197.2 sq. metres (2123.1 sq. feet)

Sketch layout only. Not to scale. Plan produced for Whittaker & Co.

Plan produced using PlanUp.

These particulars, whilst believed to be accurate are set out as a general outline only for guidance and do not constitute any part of an offer or contract. Intending purchasers should not rely on them as statements of representation of fact, but must satisfy themselves by inspection or otherwise as to their accuracy. No person in this firm's employment has the authority to make or give any representation or warranty in respect of the property.

