



11 Hill View

Whitwell, SG4 8AX

A sizeable semi-detached which has been significantly extended, has a well executed loft conversion, external home office and feature outdoor kitchen/dining area. Located in the charming village of Whitwell in an elevated position with distant views over to the Bowes-Lyon estate, this very appealing family home is offered for sale CHAIN FREE.

Offers in excess of £595,000

11 Hill View

Whitwell, SG4 8AX



- An extended semi-detached family home with rural views
- Bedrooms one and two both have en-suite shower rooms
- Garage and off road parking for 4 cars
- Entrance hall, cloakroom and spacious living/dining room
- Two further bedrooms and family bathroom with Jacuzzi bath and shower enclosure
- Village store/post office, Doctors surgery, great pub, tea rooms, mobile butchers and fish van (visit weekly)
- Kitchen/breakfast room with an extensive range of storage units and integrated dishwasher
- Detached home office and feature outdoor dining area with Pizza oven and BBQ oven
- Harpenden Station 6.1 miles, Hitchin Town Centre 6.3 miles

GROUND FLOOR

Entrance Hall

Cloakroom

Living/Dining Room

Kitchen/Dining Room

FIRST FLOOR

Landing

Bedroom Two

20'2 x 11'3 max (6.15m x 3.43m max)

Walk-in Wardrobe

En-Suite Shower Room

Bedroom Three

17'1 x 9'4 (5.21m x 2.84m)

Bedroom Four

13'2 x 9'1 (4.01m x 2.77m)

Family Bathroom

SECOND FLOOR

Bedroom One

17'8 max x 16'10 (5.38m max x 5.13m)

En-Suite Shower Room

EXTERNALLY

Landscaped Garden

Home Office

15'8 x 11'11 (4.78m x 3.63m)

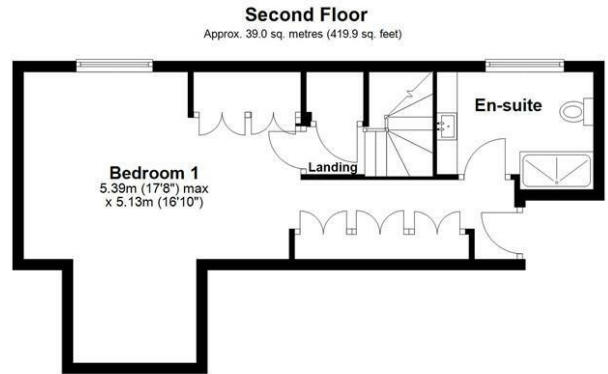
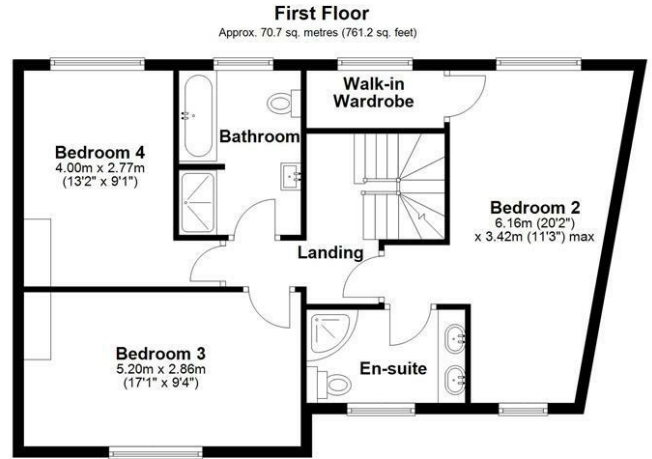
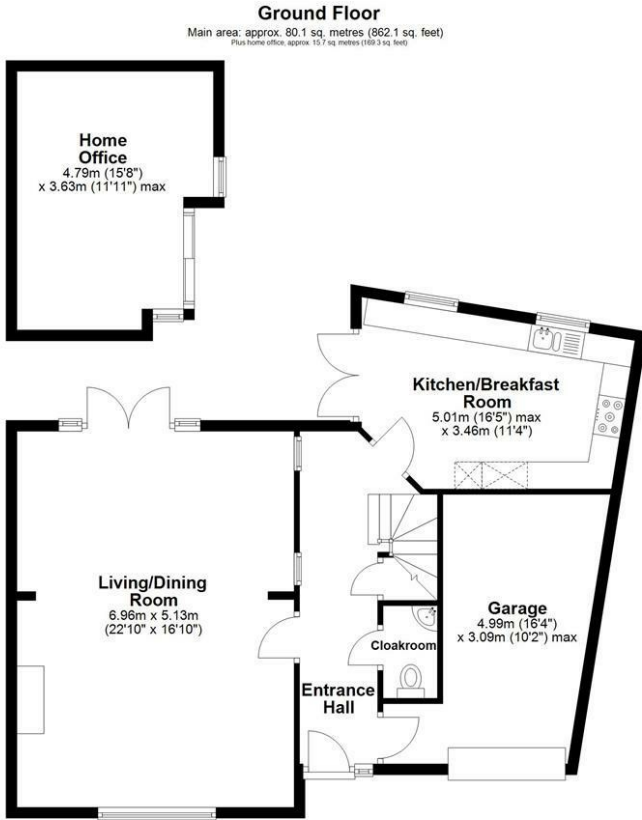
Outdoor Kitchen/Dining Area



[Directions](#)



Floor Plan



Main area: Approx. 189.8 sq. metres (2043.2 sq. feet)

Plus home office, approx. 15.7 sq. metres (169.3 sq. feet)

Sketch layout only. Not to scale. Plan produced for Whittaker & Co.

Plan produced using PlanUp.

These particulars, whilst believed to be accurate are set out as a general outline only for guidance and do not constitute any part of an offer or contract. Intending purchasers should not rely on them as statements of representation of fact, but must satisfy themselves by inspection or otherwise as to their accuracy. No person in this firm's employment has the authority to make or give any representation or warranty in respect of the property.

