



## 25 The Pleasance

Harpenden, AL5 3NA

Well proportioned bungalow with a private garden (westerly aspect), and a garage to the rear. The Pleasance is a peaceful spot, close to Kinsbourne Common.

**Guide price £899,950**

# 25 The Pleasance

Harpenden, AL5 3NA



4



2



1



D

- Circa 1,250 sq ft
- Well presented throughout
- Open plan Living / Dining Room
- Four Bedrooms
- Two Bathrooms
- Private garden
- Garage & driveway
- Close to Kinsbourne Common

## Entrance Hall

## Living Room

18'11" x 17'7" (max) (5.78 x 5.38 (max))

## Kitchen / Breakfast Room

13'6" x 9'7" (4.14 x 2.94)

## Bedroom One

12'5" x 10'11" (3.81 x 3.34)

## En-suite Shower Room

## Bedroom Two

11'10" (max) x 11'6" (3.63 (max) x 3.53)

## Bedroom Three

13'1" x 11'8" (4.00 x 3.56)

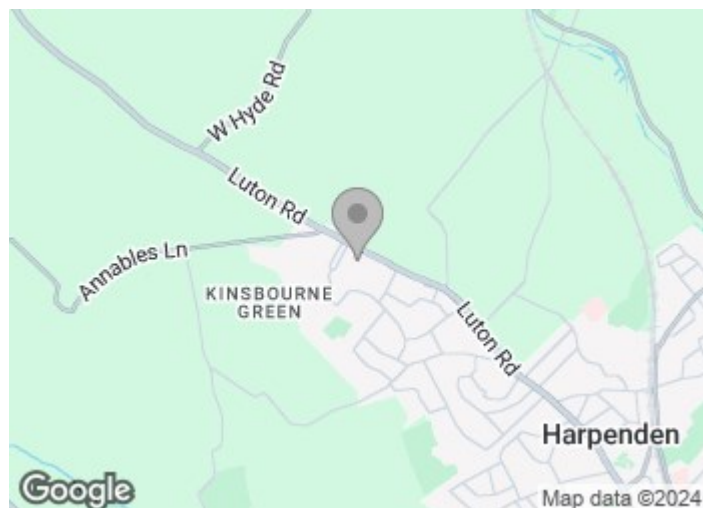
## Bedroom Four

9'10" x 7'8" (3.00 x 2.34)

## Bathroom

## Garage

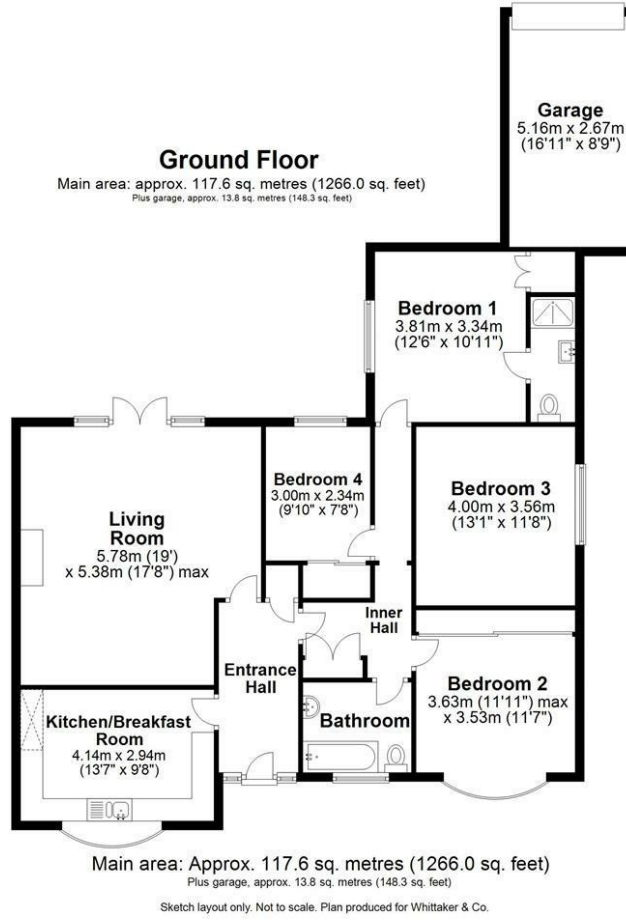
16'11" x 8'9" (5.16 x 2.67)



[Directions](#)



# Floor Plan



Plan produced using PlanUp.

These particulars, whilst believed to be accurate are set out as a general outline only for guidance and do not constitute any part of an offer or contract. Intending purchasers should not rely on them as statements of representation of fact, but must satisfy themselves by inspection or otherwise as to their accuracy. No person in this firm's employment has the authority to make or give any representation or warranty in respect of the property.

