

Treetops Garden Court

Kimpton, SG4 8QP

Treetops is an impressive 3 bedroom detached house, forming part of an exclusive development of 4 brand new contemporary styled detached houses, located in the heart of this well regarded Hertfordshire village. The property benefits from a beautiful interior which features a well fitted kitchen, quality sanitaryware and excellent finishes.

Guide price £675,000

Treetops Garden Court

Kimpton, SG4 8QP



3



2



2



- Brand new detached house with a beautifully styled interior
- Main bedroom with en suite shower room, 2 further bedrooms and an attractive, tastefully fitted bathroom
- Something of a gem, Kimpton is a well regarded and very friendly Hertfordshire village
- Lovely dual aspect living room. Cloakroom W.C.
- Off street parking to the front and gardens to the rear
- The village has a great primary school, together with an excellent Budge's/post office and friendly village pub
- Well equipped 'shaker' style kitchen/dining room with quartz work surfaces
- Gas fired boiler supply under floor heating to the ground floor and radiators on the first floor
- Harpenden station 3.9 miles, KWS secondary School 2.7 miles, St Albans City Centre 8.4 miles
- Predicted energy efficiency B (84)

GROUND FLOOR

Entrance Hall

Cloakroom

Living Room

20'4" x 10'2" (6.2 x 3.1)

Kitchen/dining Room

20'6" x 10'5" (6.25 x 3.20)

Utility room

Landing

FIRST FLOOR

Bedroom One

13'9" x 9'10" (4.2 x 3.0)

En Suite

Bedroom Two

10'5" x 9'6" (3.18m x 2.90m)

Bedroom Three

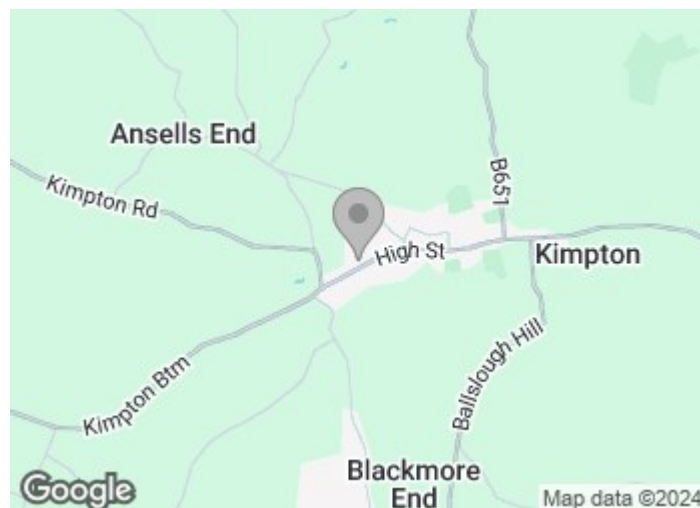
10'2" x 6'9" (3.10m x 2.06m)

Family Bathroom

EXTERNALLY

Off Street Parking

Rear Garden



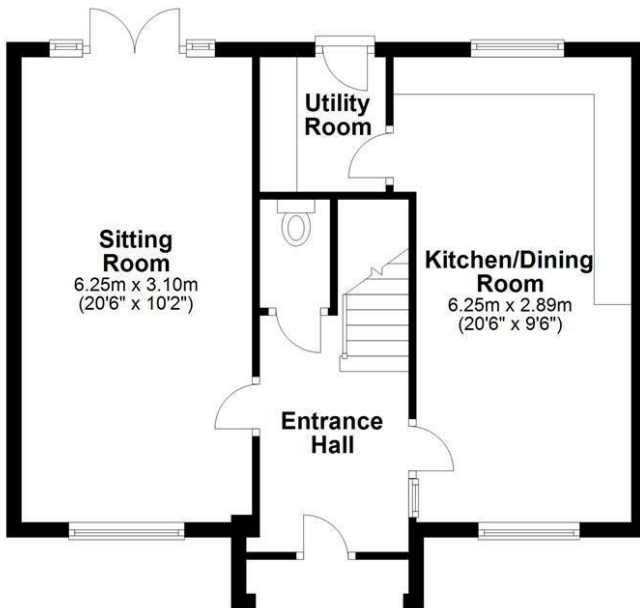
Directions



Floor Plan

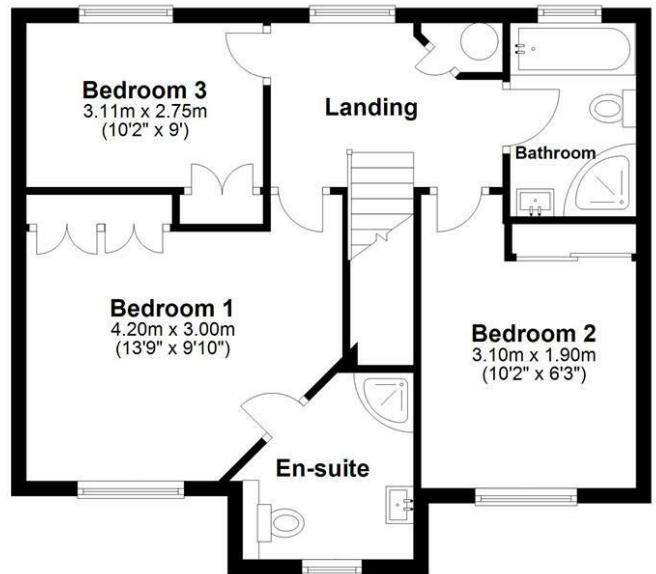
Ground Floor

Approx. 53.3 sq. metres (573.5 sq. feet)



First Floor

Approx. 53.1 sq. metres (571.7 sq. feet)



Total area: approx. 106.4 sq. metres (1145.2 sq. feet)

Sketch layout only. Not to scale. Plan produced for Whittaker & Co.

Plan produced using PlanUp.

These particulars, whilst believed to be accurate are set out as a general outline only for guidance and do not constitute any part of an offer or contract. Intending purchasers should not rely on them as statements of representation of fact, but must satisfy themselves by inspection or otherwise as to their accuracy. No person in this firm's employment has the authority to make or give any representation or warranty in respect of the property.