



Park Mount

Harpenden, AL5 3AS

Extended and refurbished by our clients, this fantastic family home of circa 1,900 sq ft includes an open plan Kitchen / Dining / Family Room which opens onto the beautiful 120 ft south facing garden. Ideally located for schooling, close to the popular Nickey Line and within walking distance of the town centre and station. *CHAIN FREE*

Guide price £1,200,000

Park Mount

Harpenden, AL5 3AS



- Circa 1,900 sq ft
- Garden 120 ft, south facing
- Walking distance to town centre
- Immaculately presented throughout
- Garage & off-street parking
- Chain Free
- Open plan Kitchen / Dining / Family Room
- Ideally located for schooling

Entrance Hall

Living Room

13'0" x 11'1" (3.97 x 3.38)

Kitchen / Dining / Family Room

Utility Room

Cloakroom

Bedroom One

13'7" x 13'2" (4.16 x 4.02)

En-suite Shower Room

Bedroom Two

13'4" x 11'1" (4.08 x 3.38)

Bedroom Three

12'0" x 11'1" (3.66 x 3.38)

Bedroom Four

11'11" (max) x 10'0" (3.65 (max) x 3.07)

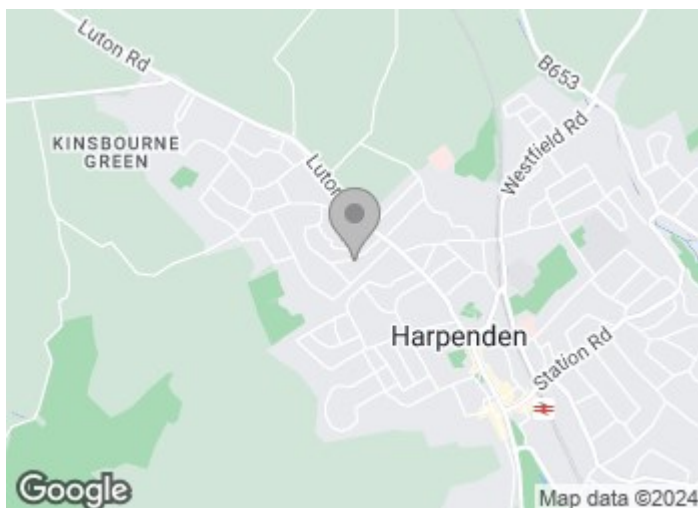
Bedroom Five

7'11" x 5'10" (2.42 x 1.78)

Family Bathroom

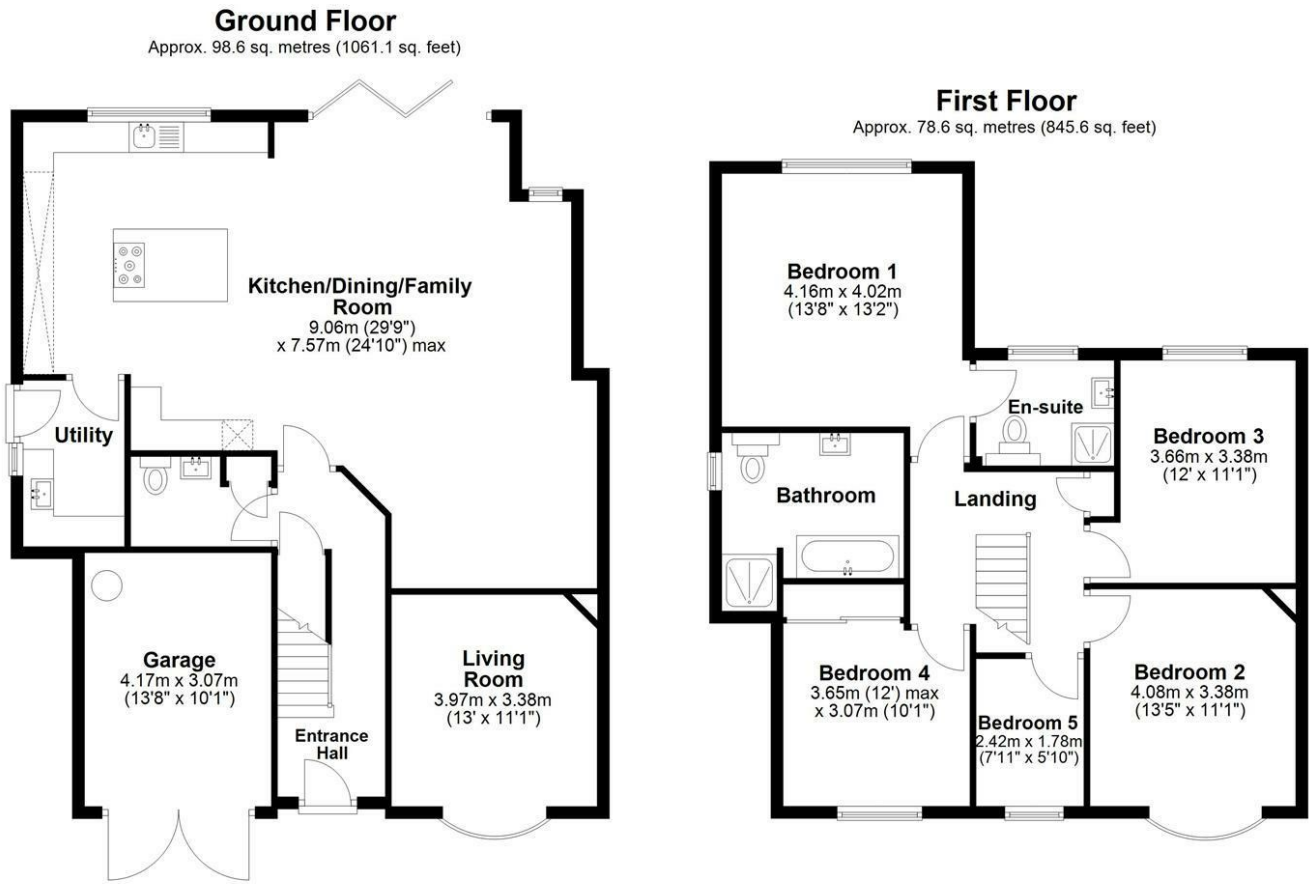
Integral Garage

13'8" x 10'0" (4.17 x 3.07)





Floor Plan



Total area: approx. 177.1 sq. metres (1906.6 sq. feet)

Sketch layout only. Not to scale. Plan produced for Whittaker & Co.

Plan produced using PlanUp.

These particulars, whilst believed to be accurate are set out as a general outline only for guidance and do not constitute any part of an offer or contract. Intending purchasers should not rely on them as statements of representation of fact, but must satisfy themselves by inspection or otherwise as to their accuracy. No person in this firm's employment has the authority to make or give any representation or warranty in respect of the property.

