



Milton Road

Harpenden, AL5 5LU

Well proportioned apartment on the top floor (walk up), of this purpose built block. Benefits include an allocated garage, plenty of parking to front and rear (unallocated), and communal gardens. The second Bedroom has a balcony. Albany Court is close to The Common and within a few minutes' walk of the town centre and station. AVAILABLE FROM 5th AUGUST. ****NO PETS****

£1,650 Per month

Milton Road

Harpenden, AL5 5LU



- New carpets & curtains
- Plenty of storage
- Newly painted Kitchen
- Combination washing machine / dryer
- Dishwasher
- Garage & parking to front & rear
- Communal gardens
- Short walk to station & town centre
- Available from 5th August 2024

Entrance Hall

Living Room

17'3" x 12'2" (5.26 x 3.71)

Kitchen

10'0" x 7'4" (3.05 x 2.26)

Bedroom One

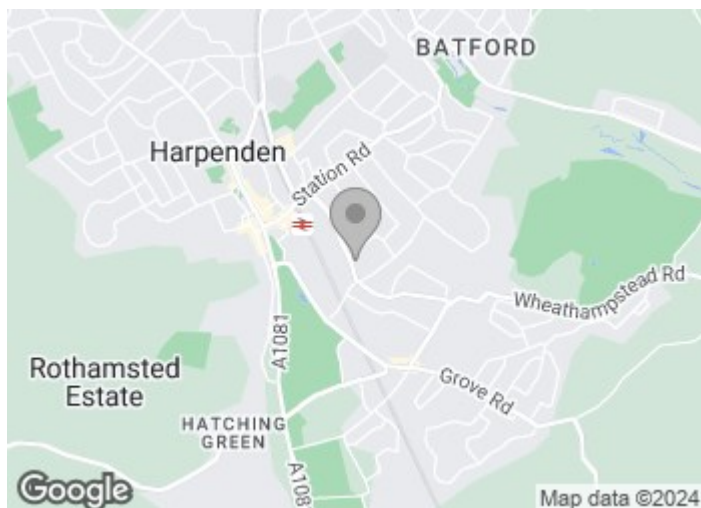
12'11" x 11'8" (3.96 x 3.58)

Bedroom Two

13'6" x 8'9" (4.13 x 2.69)

Balcony

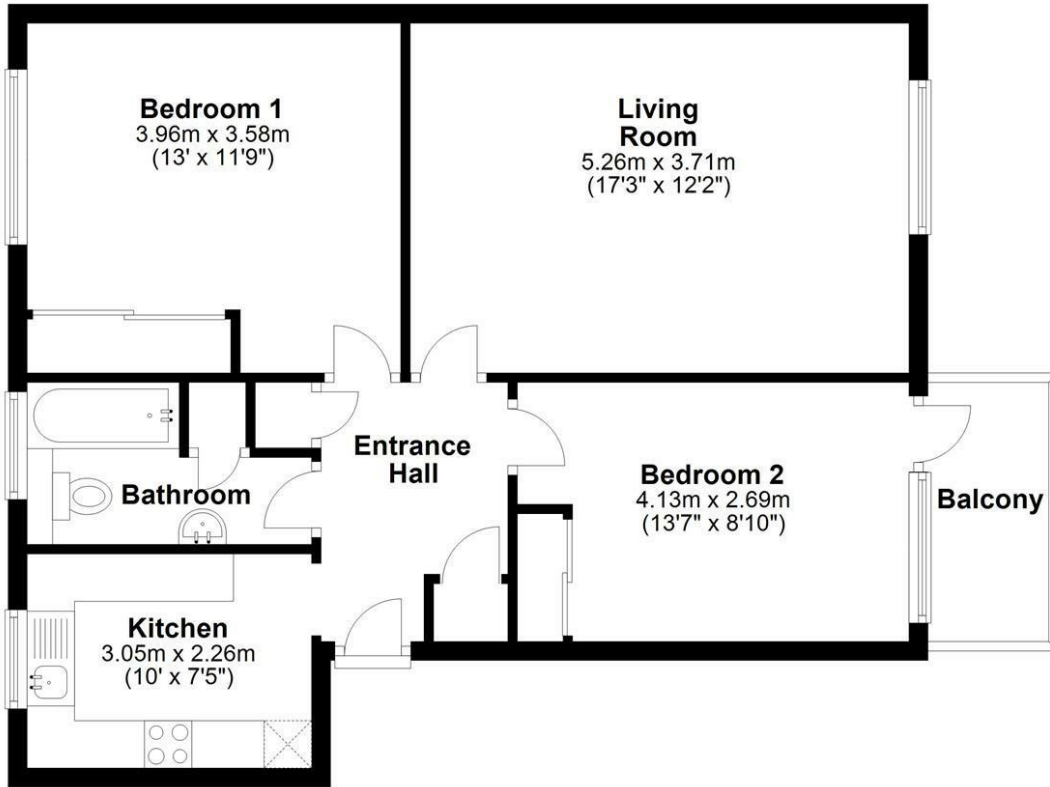
Bathroom





Top Floor

Approx. 64.2 sq. metres (690.7 sq. feet)



Total area: approx. 64.2 sq. metres (690.7 sq. feet)

Sketch layout only. Not to scale. Plan produced for Whittaker & Co.

Plan produced using PlanUp.

These particulars, whilst believed to be accurate are set out as a general outline only for guidance and do not constitute any part of an offer or contract. Intending purchasers should not rely on them as statements of representation of fact, but must satisfy themselves by inspection or otherwise as to their accuracy. No person in this firm's employment has the authority to make or give any representation or warranty in respect of the property.

