



Beesonend Lane

Harpenden, AL5 2AA

Beautiful period cottage - one of just six - of circa 1,100 sq ft, with a 55 ft south facing garden which backs on to the open fields of The Childwickbury Estate. Beesonend Cottages are on the edge of the popular West Common area, within easy reach Harpenden town centre and station.

Guide price £1,049,950

Beesonend Lane

Harpenden, AL5 2AA



- Period property
- Garage & off-street parking
- Circa 1,100 sq ft
- Backing onto open fields
- Garden 55ft, south facing
- Within easy reach of Harpenden

Living Room

12'5" x 11'5" (3.80 x 3.50)

Dining Room

14'1" (max) x 12'3" (4.31 (max) x 3.74)

Kitchen / Breakfast Room

15'10" x 12'3" (max) (4.83 x 3.74 (max))

Utility Room

7'0" x 5'4" (2.15 x 1.64)

Cloakroom

Bedroom One

12'3" x 11'11" (3.74 x 3.65)

Bedroom Two

12'5" x 11'6" (3.80 x 3.52)

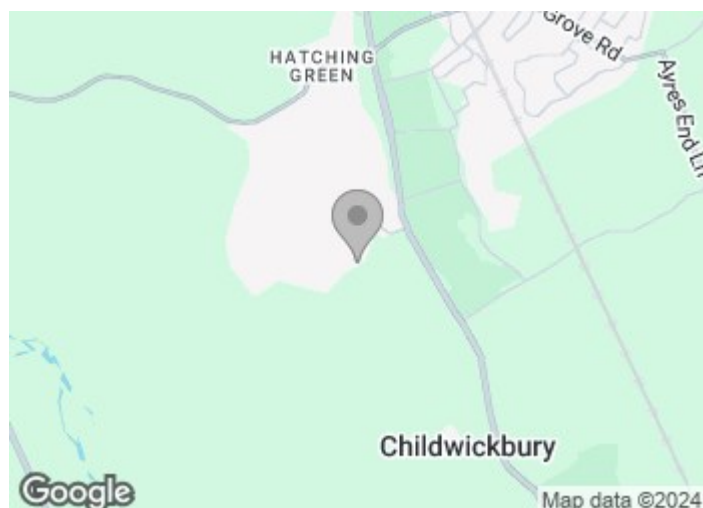
Bedroom Three

9'5" x 8'11" (2.89 x 2.73)

Bathroom

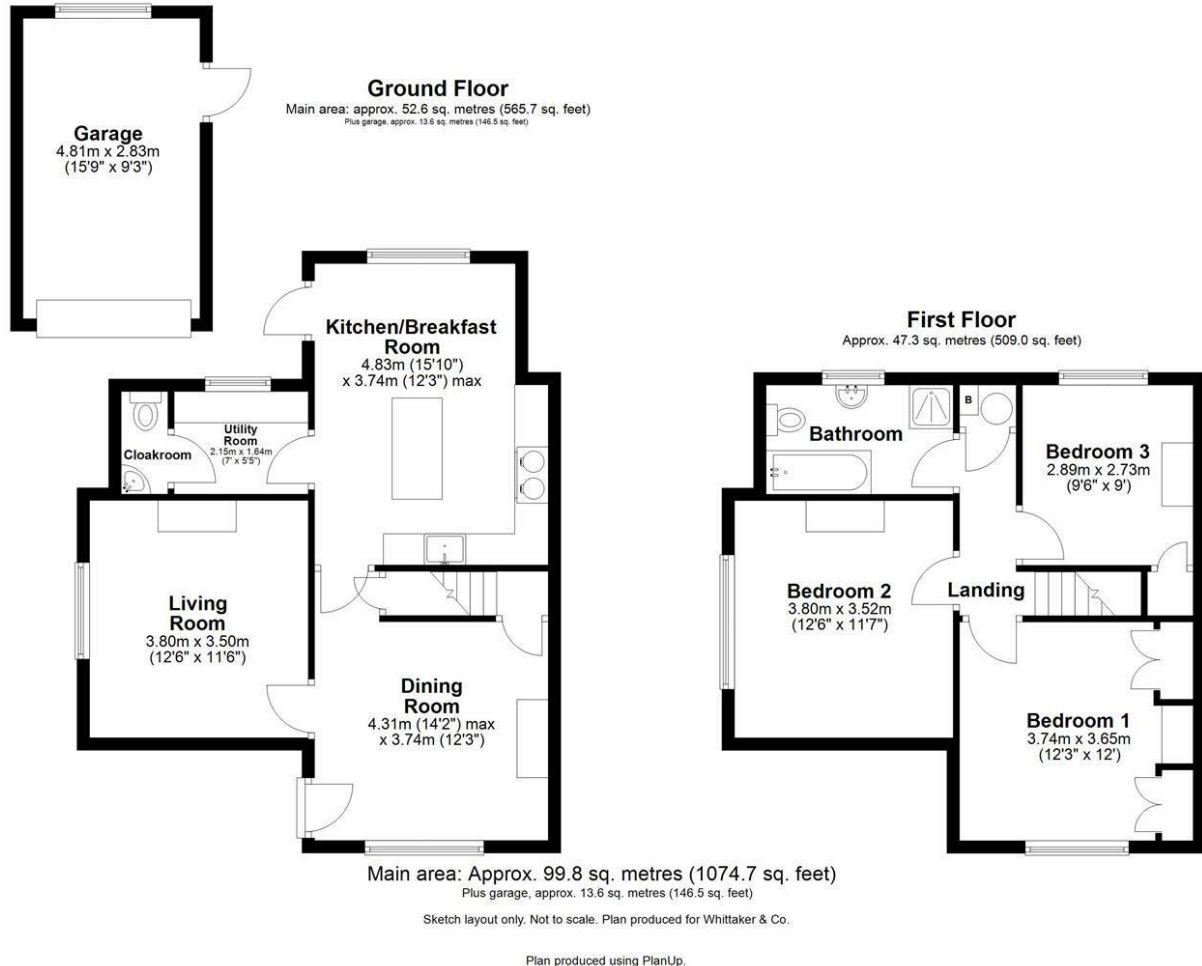
Garage

15'9" x 9'3" (4.81 x 2.83)





Floor Plan



These particulars, whilst believed to be accurate are set out as a general outline only for guidance and do not constitute any part of an offer or contract. Intending purchasers should not rely on them as statements of representation of fact, but must satisfy themselves by inspection or otherwise as to their accuracy. No person in this firm's employment has the authority to make or give any representation or warranty in respect of the property.

