



Wheathampstead Road

Harpenden, AL5 1JA

Handsome 1930s family home of circa 1,800 sq ft, with potential to extend (STPP). Plenty of living and entertaining space, including the Living Room which opens onto the 60 ft south facing garden. Well placed for schooling and close to both the amenities of Southdown and beautiful open countryside. Harpenden town centre and station are within easy reach.

Guide price £1,450,000

Wheathampstead Road

Harpenden, AL5 1JA



- Circa 1,800 sq ft
- Garden 60ft, south facing
- Short walk to amenities of Southdown
- Potential to extend (STPP)
- Garage & ample off-street parking
- Within easy reach of Harpenden
- Plenty of living space
- Well placed for schooling
- Close to open countryside

Entrance Hall

Living Room

18'3" x 13'10" (5.57 x 4.23)

Kitchen

17'1" x 8'8" (5.23 x 2.65)

Dining Room

13'1" x 10'9" (4.00 x 3.30)

Family Room

15'8" x 13'0" (4.80 x 3.98)

Utility Room

12'9" x 6'9" (3.90 x 2.08)

Cloakroom

Bedroom One

14'0" x 11'10" (4.29 x 3.63)

En-suite Bathroom

Bedroom Two

13'3" x 11'8" (4.04 x 3.56)

En-suite Shower Room

Bedroom Three

12'0" x 10'5" (3.66 x 3.19)

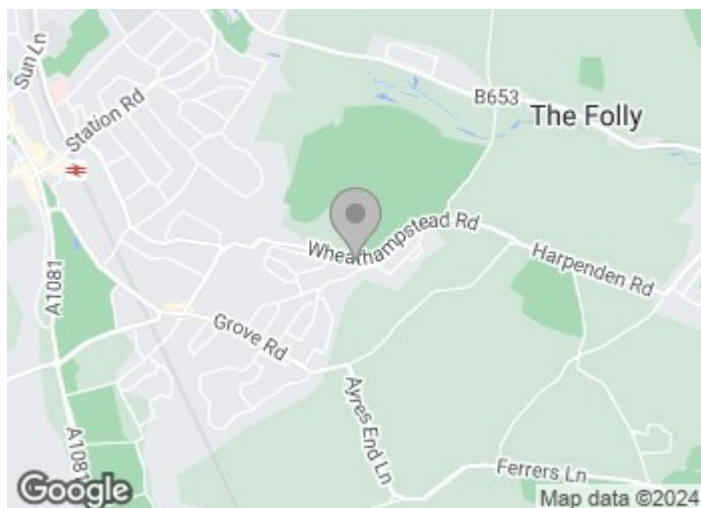
Bedroom Four

10'5" x 8'2" (3.19 x 2.50)

Family Bathroom

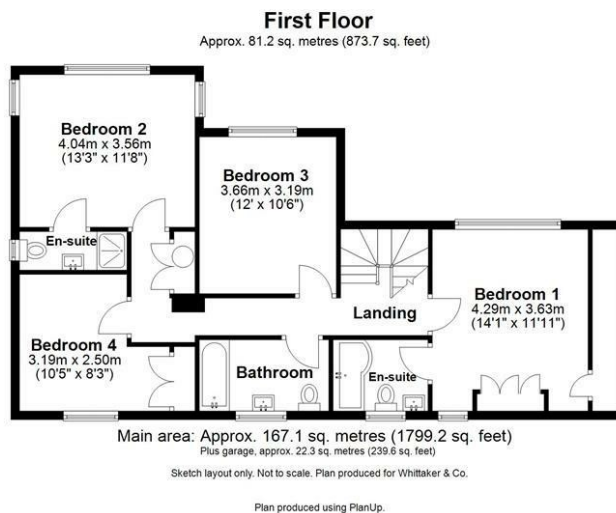
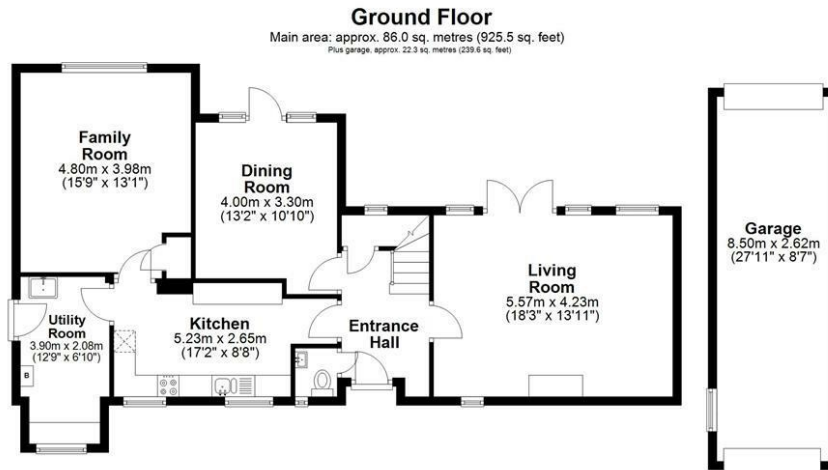
Garage

27'10" x 8'7" (8.50 x 2.62)





Floor Plan



These particulars, whilst believed to be accurate are set out as a general outline only for guidance and do not constitute any part of an offer or contract. Intending purchasers should not rely on them as statements of representation of fact, but must satisfy themselves by inspection or otherwise as to their accuracy. No person in this firm's employment has the authority to make or give any representation or warranty in respect of the property.

