



Southdown Road

Harpenden, AL5 1PU

Well presented apartment in central Southdown. Close to The Common and within a short walk to Harpenden town centre and station. . Additional benefit of an allocated parking space to the rear. Lease 109 remaining. *CHAIN FREE*

Guide price £220,000

Southdown Road

Harpenden, AL5 1PU



- Well presented apartment
- Central Southdown location
- Close to The Common
- Walking distance to Harpenden town centre & station
- Allocated parking space to rear
- Lease 109 years remaining
- CHAIN FREE

Entrance Hall

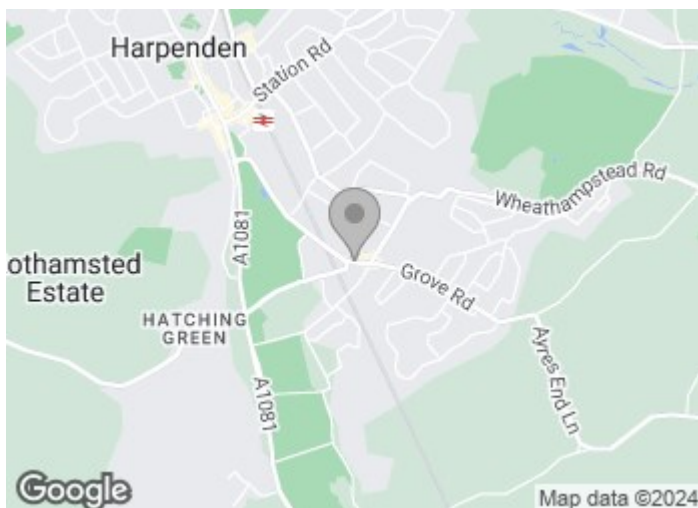
Kitchen/Living Room

15'10" x 10'10" (4.84m x 3.32m)

Bedroom

10'4" x 7'1" (3.15m x 2.18m)

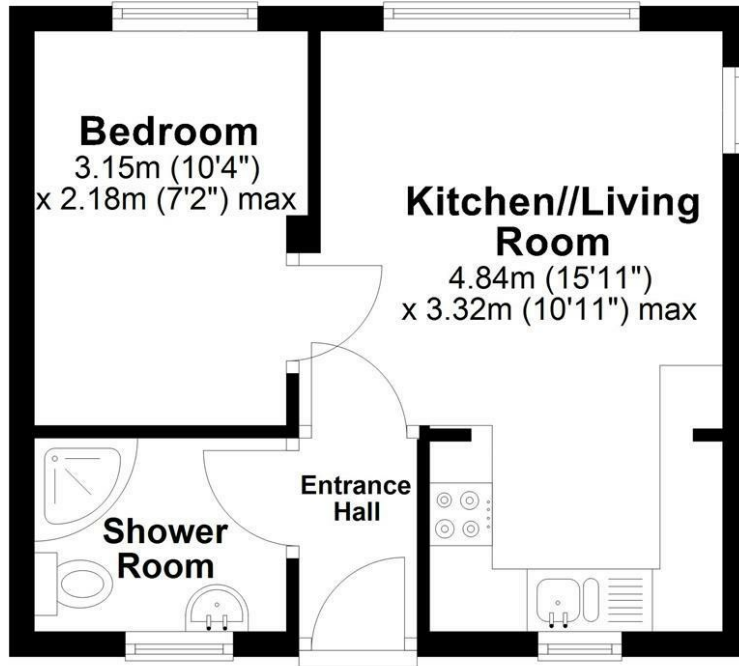
Shower Room





First Floor

Approx. 26.4 sq. metres (284.2 sq. feet)



Total area: approx. 26.4 sq. metres (284.2 sq. feet)

Sketch layout only. Not to scale. Plan produced for Whittaker & Co.

Plan produced using PlanUp.

These particulars, whilst believed to be accurate are set out as a general outline only for guidance and do not constitute any part of an offer or contract. Intending purchasers should not rely on them as statements of representation of fact, but must satisfy themselves by inspection or otherwise as to their accuracy. No person in this firm's employment has the authority to make or give any representation or warranty in respect of the property.

