



## The Slype

Gustard Wood, AL4 8RY

Immaculately presented four bedroom family home, with plenty of living and entertaining space and a beautiful garden. The house is set in grounds of circa 0.3 acre, in the heart of the popular Gustard Wood area, moments from wonderful open countryside.

**Guide price £1,395,000**

# The Slype

Gustard Wood, AL4 8RY



- Presented to a very good standard throughout
- Fabulous open plan Kitchen / Dining / Family Room
- Four Bedrooms and two bathrooms
- Wheathampstead High Street (1.7 miles), Harpenden Town Centre (4 miles), St Albans City Centre (6.4 miles)
- Private rear garden
- Double carport and large driveway
- Peaceful location
- Moments from open countryside, Mid-Herts Golf Club and the 'Cross Keys' pub

## Entrance Hall

## En-suite Shower Room

## Kitchen / Dining / Family Room

## Bedroom Two

24'9" x 20'6" (7.55 x 6.26)

14'6" x 17'2" (4.43 x 5.25)

## Living Room

## Bedroom Three

16'5" x 22'10" (5.01 x 6.97)

11'6" x 13'0" (3.51 x 3.98)

## Home Office

## Bedroom Four

11'1" x 14'11" (3.39 x 4.56)

11'6" x 8'5" (3.53 x 2.57)

## Cloakroom

## Family Bathroom

## Utility Room

## Double Carport

8'11" x 10'4" (2.74 x 3.16)

## Boat Room

9'5" x 5'5" (2.88 x 1.67)

## Bedroom One

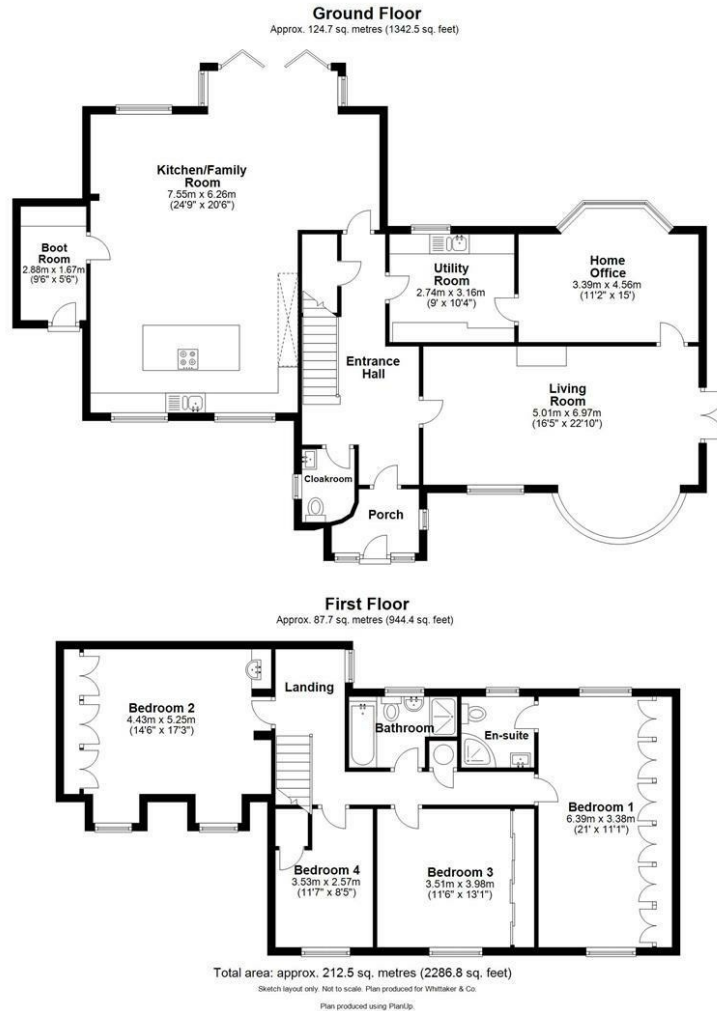
20'11" x 11'1" (6.39 x 3.38)







# Floor Plan



These particulars, whilst believed to be accurate are set out as a general outline only for guidance and do not constitute any part of an offer or contract. Intending purchasers should not rely on them as statements of representation of fact, but must satisfy themselves by inspection or otherwise as to their accuracy. No person in this firm's employment has the authority to make or give any representation or warranty in respect of the property.

