



Eastmoor Park

Harpenden, AL5 1BP

A spacious family home of circa 2,140 sq ft with potential to update and extend (STPP), and a beautiful 80ft south facing garden. Eastmoor Park is a peaceful, popular area which is close to both the amenities of Southdown and The Common. Walking distance to Harpenden town centre and station.

Guide price £1,100,000

Eastmoor Park

Harpenden, AL5 1BP



5



2



4



C

- Circa 2,140 sq ft
- Garden 80ft south facing
- Walking distance to Harpenden
- Versatile living space
- Double Garage
- Close to The Common
- Potential to extend (STPP)
- Close to amenities of Southdown

Entrance Hall

Living Room

20'3" x 14'7" (6.18 x 4.46)

Family Room

18'8" x 11'11" (5.71 x 3.64)

Dining Room

11'11" x 9'10" (3.64 x 3.02)

Kitchen / Breakfast Room

15'8" x 10'10" (4.80 x 3.31)

Study

8'1" x 6'8" (2.47 x 2.05)

Bedroom One

14'3" x 11'11" (max) (4.35 x 3.64 (max))

Dressing Room

7'10" x 6'8" (2.41 x 2.04)

En-suite Bathroom

Bedroom Two

11'5" x 10'10" (3.49 x 3.31)

Bedroom Three

11'9" x 6'8" (3.60 x 2.05)

Bedroom Four

9'8" x 9'6" (2.97 x 2.91)

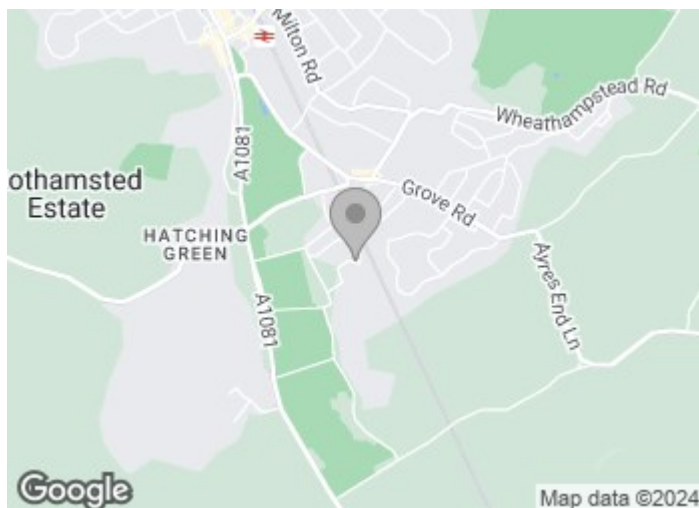
Bedroom Five

13'5" x 7'10" (4.11 x 2.41)

Family Bathroom

Integral Double Garage

18'6" (max) x 14'7" (5.64 (max) x 4.46)

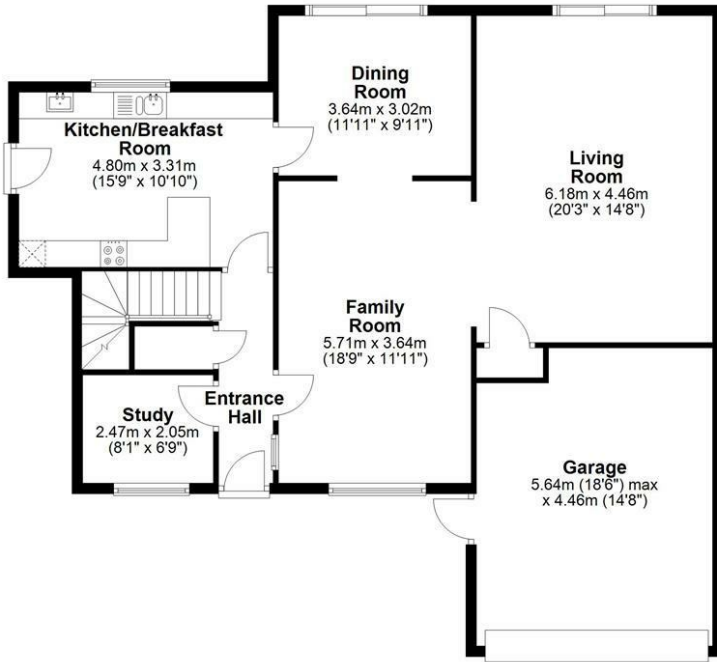




Floor Plan

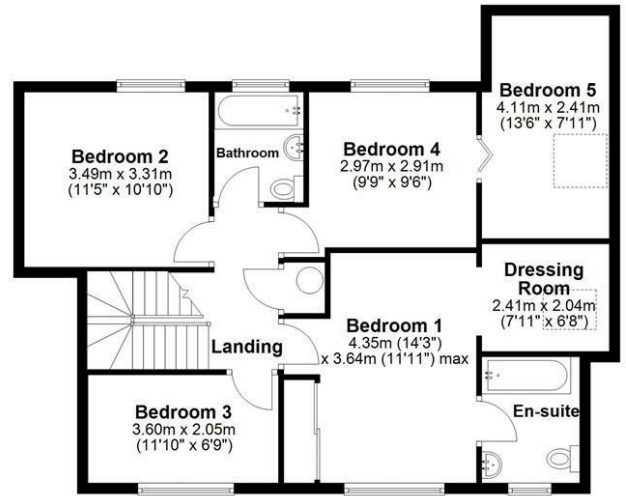
Ground Floor

Approx. 119.9 sq. metres (1291.0 sq. feet)



First Floor

Approx. 78.6 sq. metres (846.4 sq. feet)



Total area: approx. 198.6 sq. metres (2137.4 sq. feet)

Sketch layout only. Not to scale. Plan produced for Whittaker & Co.

Plan produced using PlanUp.

These particulars, whilst believed to be accurate are set out as a general outline only for guidance and do not constitute any part of an offer or contract. Intending purchasers should not rely on them as statements of representation of fact, but must satisfy themselves by inspection or otherwise as to their accuracy. No person in this firm's employment has the authority to make or give any representation or warranty in respect of the property.

