



Wendover Close Harpenden, AL5 5SH

With potential to modernise and extend (STPP), this family home of just under 1,000 sq ft offers fantastic open plan living space, backing on to the 55ft south west facing garden. Peaceful location in a popular area which is well placed for schooling and within walking distance of the town centre and station. *CHAIN FREE*

Guide price £595,000

Wendover Close

Harpenden, AL5 5SH



- Circa 1,000 sq ft
- Potential to extend (STPP)
- Peaceful location
- Open plan living space
- Garage & off-street parking
- Walking distance to town centre & station
- Garden 55ft south west facing
- Well placed for schooling
- Chain Free

Entrance Hall

Lounge / Dining Room

16'0" x 17'10" (4.88 x 5.44)

Kitchen

20'6" x 7'5" (6.25 x 2.27)

Cloakroom

Bedroom One

8'10" x 15'10" (2.70 x 4.85)

Bedroom Two

9'10" x 9'6" (3.02 x 2.91)

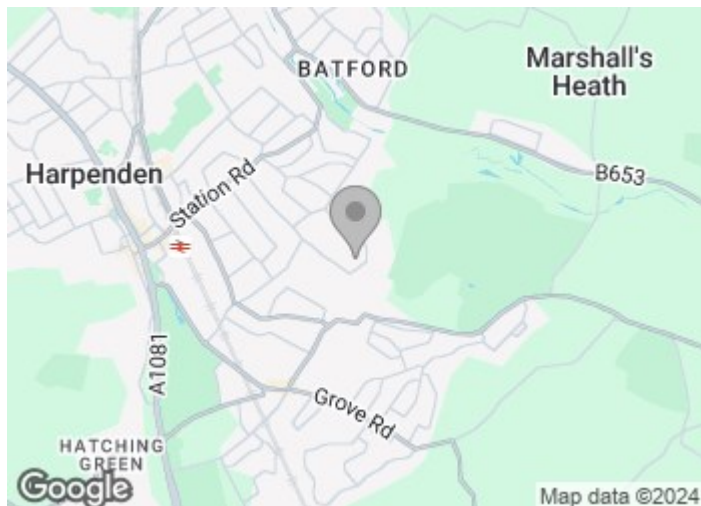
Bedroom Three

9'11" x 8'0" (3.04 x 2.45)

Shower Room

Integral Garage

14'11" x 7'3" (4.57 x 2.22)

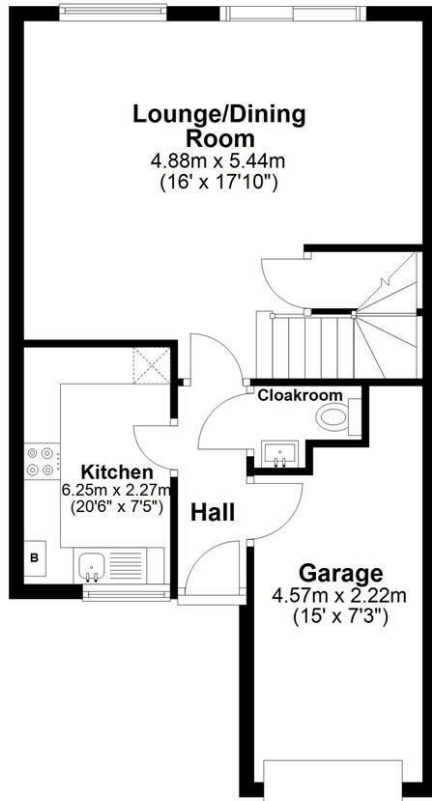




Floor Plan

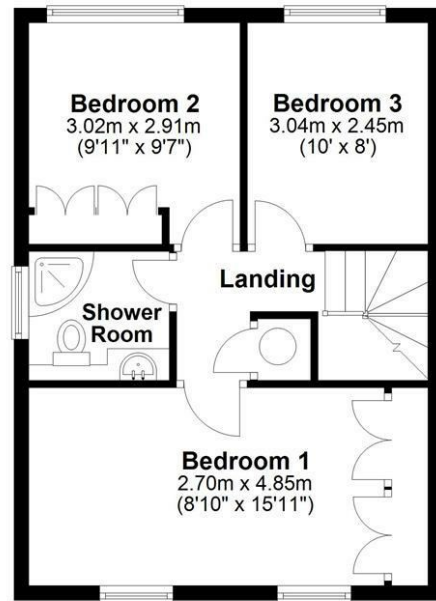
Ground Floor

Approx. 47.8 sq. metres (514.8 sq. feet)



First Floor

Approx. 41.9 sq. metres (450.8 sq. feet)



Total area: approx. 89.7 sq. metres (965.6 sq. feet)

Sketch layout only. Not to scale. Plan produced for Whittaker & Co.

Plan produced using PlanUp.

These particulars, whilst believed to be accurate are set out as a general outline only for guidance and do not constitute any part of an offer or contract. Intending purchasers should not rely on them as statements of representation of fact, but must satisfy themselves by inspection or otherwise as to their accuracy. No person in this firm's employment has the authority to make or give any representation or warranty in respect of the property.

