



The Deerings

Harpenden, AL5 2PF

Set on a plot of 0.25 acre, this family home of circa 1,600 sq ft offers potential to extend (STPP). The beautiful 100 ft garden has a southerly aspect. A peaceful spot in the popular West Common area, within easy reach of Harpenden town centre and station. *CHAIN FREE*.

Guide price £1,375,000

The Deerings

Harpenden, AL5 2PF



- Plot of 0.25 acre
- Garden 100 ft, southerly aspect
- Within easy reach of Harpenden
- Potential to extend (STPP)
- Double Garage
- Chain Free
- Circa 1,600 sq ft
- Peaceful location

Entrance Hall

En-suite Shower Room

Living Room

Bedroom Two

20'7" (max) x 11'10" (6.28 (max) x 3.62)

Bedroom Three

12'1" x 9'10" (3.70 x 3.00)

9'4" (max) x 8'2" (2.86 (max) x 2.49)

Study Area

8'3" x 5'8" (2.52 x 1.74)

Bedroom Four

8'8" x 8'2" (2.65 x 2.49)

Dining Room

11'1" x 8'11" (3.39 x 2.73)

Shower Room

Kitchen

14'5" x 7'1" (4.41 x 2.18)

Integral Garage

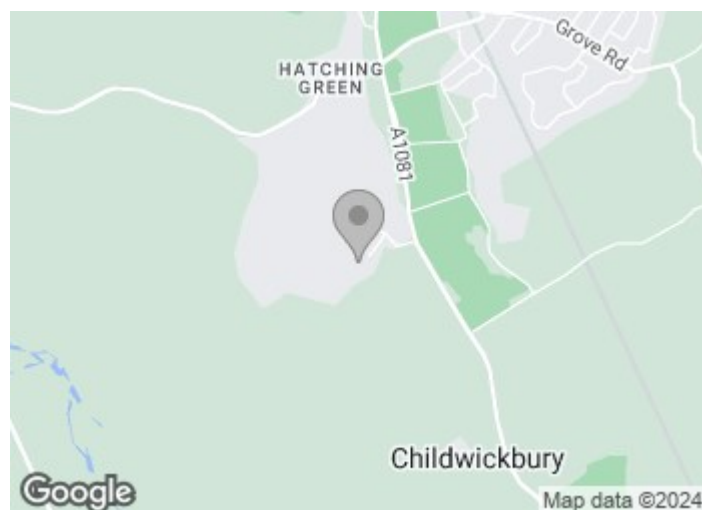
17'5" (max) x 15'10" (5.32 (max) x 4.84)

Utility Room

WC

Bedroom One

13'8" x 11'7" (4.17 x 3.54)

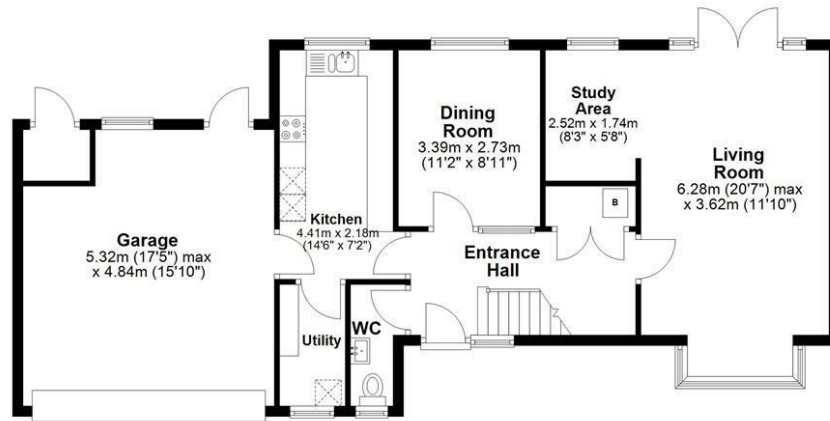




Floor Plan

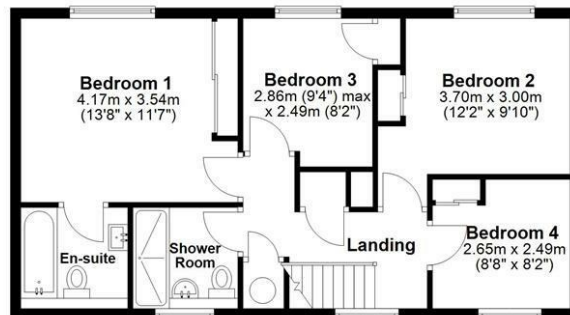
Ground Floor

Approx. 88.8 sq. metres (955.9 sq. feet)



First Floor

Approx. 58.7 sq. metres (632.2 sq. feet)



Total area: approx. 147.5 sq. metres (1588.1 sq. feet)

Sketch layout only. Not to scale. Plan produced for Whittaker & Co.

Plan produced using PlanUp.

These particulars, whilst believed to be accurate are set out as a general outline only for guidance and do not constitute any part of an offer or contract. Intending purchasers should not rely on them as statements of representation of fact, but must satisfy themselves by inspection or otherwise as to their accuracy. No person in this firm's employment has the authority to make or give any representation or warranty in respect of the property.

