



Ranleigh Walk

Harpenden, AL5 1SR

Immaculately presented family home with open plan living space, including a Kitchen / Dining Room which opens onto the private garden. Additional benefit of a Garage & off-street parking. Ranleigh Walk is in the popular Cross Farm area, close to the amenities of Southdown and within easy reach of Harpenden town centre and station. *CHAIN FREE*

Guide price £675,000

Ranleigh Walk

Harpenden, AL5 1SR



- Circa 1,180 sq ft
- Garage & off-street parking
- Within easy reach of Harpenden
- Immaculately presented
- Private garden
- Chain Free
- Open plan living space
- Close to amenities of Southdown

Entrance Hall

Living Room

16'0" x 10'7" (4.90 x 3.23)

Kitchen / Dining Room

18'9" x 11'6" (5.73 x 3.51)

Cloakroom

Bedroom One

16'9" x 9'8" (5.13 x 2.97)

En-suite Shower Room

Bedroom Two

11'8" x 9'3" (3.58 x 2.84)

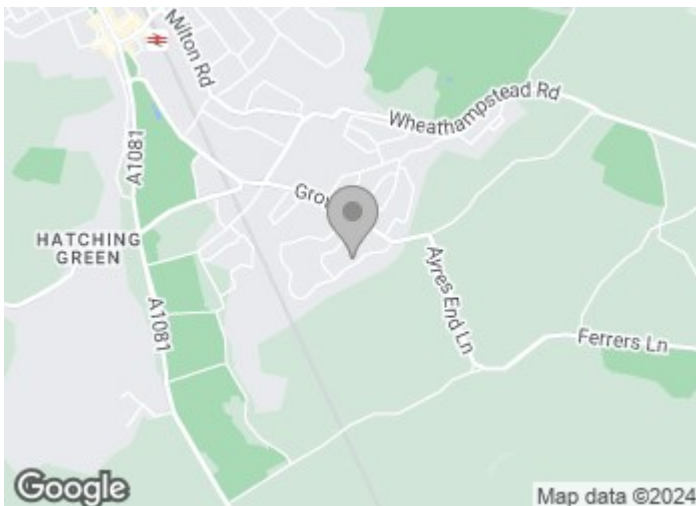
Bedroom Three

11'8" x 9'4" (3.58 x 2.87)

Family Bathroom

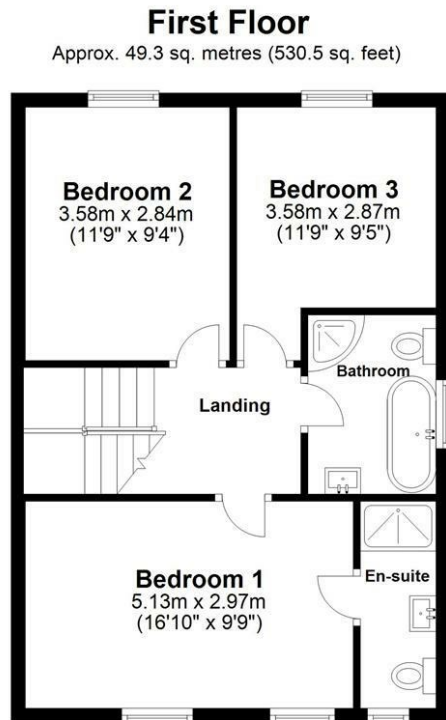
Integral Garage

16'2" x 8'2" (4.93 x 2.51)





Floor Plan



Total area: approx. 109.6 sq. metres (1179.5 sq. feet)

Sketch layout only. Not to scale. Plan produced for Whittaker & Co.

Plan produced using PlanUp.

These particulars, whilst believed to be accurate are set out as a general outline only for guidance and do not constitute any part of an offer or contract. Intending purchasers should not rely on them as statements of representation of fact, but must satisfy themselves by inspection or otherwise as to their accuracy. No person in this firm's employment has the authority to make or give any representation or warranty in respect of the property.

