



Clarence Road

Harpenden, AL5 4AQ

The Maples is a charming period building in a fantastic central location. The house has a private, low maintenance garden and two allocated parking spaces (plus visitor parking). Close to the town centre and station and well placed for schooling. *Share of Freehold*

Guide price £825,000

Clarence Road

Harpenden, AL5 4AQ



- Period property
- Living Room plus Conservatory
- Close to town centre & station
- Circa 1,400 sq ft
- Private Garden
- Well placed for schooling
- Open plan Kitchen / Dining Room
- Two allocated parking spaces plus visitor parking
- Share of Freehold

Living Room

21'1" (max) x 12'11" (6.44 (max) x 3.94)

Bedroom Two

12'11" x 10'7" (max) (3.94 x 3.23 (max))

Kitchen / Dining Room

21'0" x 12'11" (6.42 x 3.94)

Bedroom Three

12'11" x 8'6" (max) (3.94 x 2.61 (max))

Conservatory

11'7" (max) x 8'3" (3.54 (max) x 2.54)

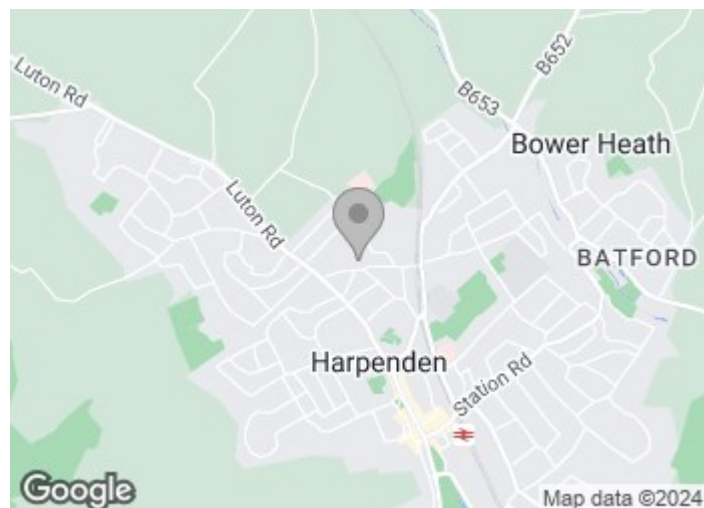
Bathroom

Cloakroom

Bedroom One

21'1" (max) x 12'11" (6.44 (max) x 3.94)

En-suite Bathroom

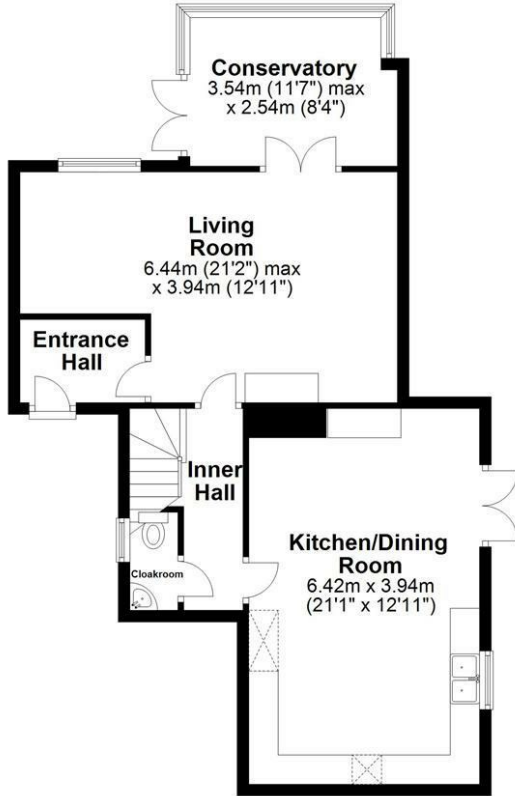




Floor Plan

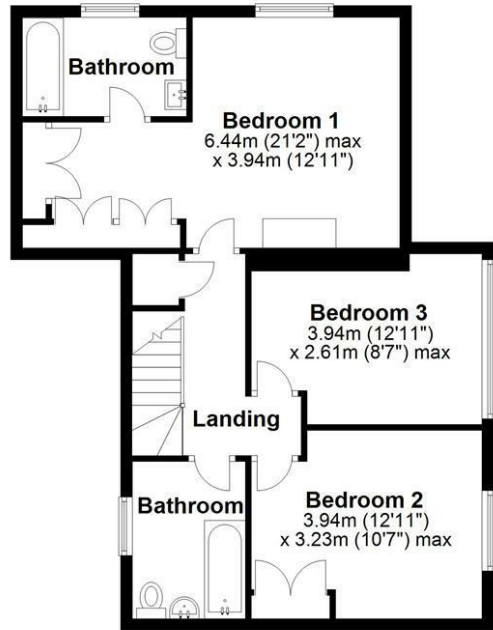
Ground Floor

Approx. 67.2 sq. metres (723.3 sq. feet)



First Floor

Approx. 63.1 sq. metres (678.9 sq. feet)



Total area: approx. 130.3 sq. metres (1402.2 sq. feet)

Sketch layout only. Not to scale. Plan produced for Whittaker & Co.

Plan produced using PlanUp.

These particulars, whilst believed to be accurate are set out as a general outline only for guidance and do not constitute any part of an offer or contract. Intending purchasers should not rely on them as statements of representation of fact, but must satisfy themselves by inspection or otherwise as to their accuracy. No person in this firm's employment has the authority to make or give any representation or warranty in respect of the property.

