

Weybourne Close

Harpenden, AL5 5RE

Arranged over three floors, this is a well presented family home with an open plan Kitchen / Dining room, backing onto the private 45ft garden. Additional benefit of a Home Office, plus off-street parking for two cars. Well placed for schooling and walking distance from the town centre, station and Batford Springs Nature Reserve.

Offers in excess of £700,000

Weybourne Close

Harpenden, AL5 5RE



- Circa 1,160 sq ft
- Home Office
- Well placed for schooling
- Arranged over three floors
- Garden 45ft
- Walking distance to town centre & station
- Open plan Kitchen / Dining Room
- Off-street parking

Living Room

11'10" (max) x 11'0" (3.61 (max) x 3.36)

Kitchen / Dining Room

Cupboard

Bedroom Two

9'11" x 11'3" (3.03 x 3.43)

Bedroom Three

11'5" x 8'9" (3.50 x 2.67)

Study Area

Bathroom

Bedroom One

15'8" x 9'11" (4.79 x 3.04)

Shower Room

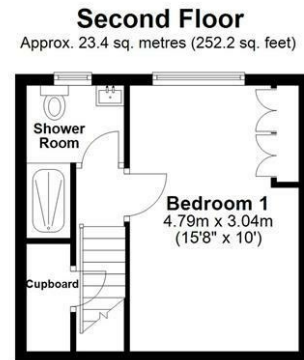
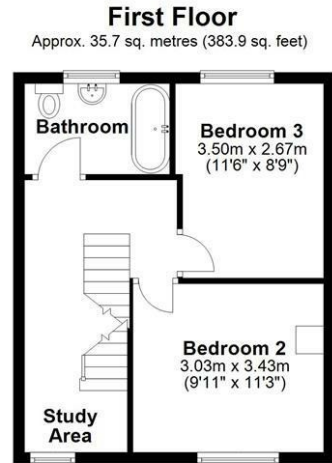
Home Office

9'1" x 11'2" (2.77 x 3.42)

Store







Main area: Approx. 108.0 sq. metres (1163.0 sq. feet)
Plus outbuildings, approx. 13.0 sq. metres (139.6 sq. feet)

Sketch layout only. Not to scale. Plan produced for Whittaker & Co.

Plan produced using PlanUp.

These particulars, whilst believed to be accurate are set out as a general outline only for guidance and do not constitute any part of an offer or contract. Intending purchasers should not rely on them as statements of representation of fact, but must satisfy themselves by inspection or otherwise as to their accuracy. No person in this firm's employment has the authority to make or give any representation or warranty in respect of the property.

