



Douglas Road

Harpenden, AL5 2HW

Well proportioned apartment of circa 665 sq ft on the first floor (walk up), of this purpose built development in a prime central location, within a few minutes' walk of the town centre and station. Allocated parking space - plus visitor parking - and large communal gardens to the rear. Share of Freehold (Lease years 953 years remaining). *CHAIN FREE*

Guide price £379,950

Douglas Road

Harpenden, AL5 2HW



- First floor (walk up)
- Modern Kitchen
- Lease XX years remaining
- Extremely well presented
- Allocated parking space plus visitor parking
- Central location
- Large Living Room
- Communal gardens to rear
- Chain Free

Entrance Hall

Living Room

18'1" x 12'3" (5.52 x 3.74)

Kitchen

10'10" x 8'9" (3.31 x 2.69)

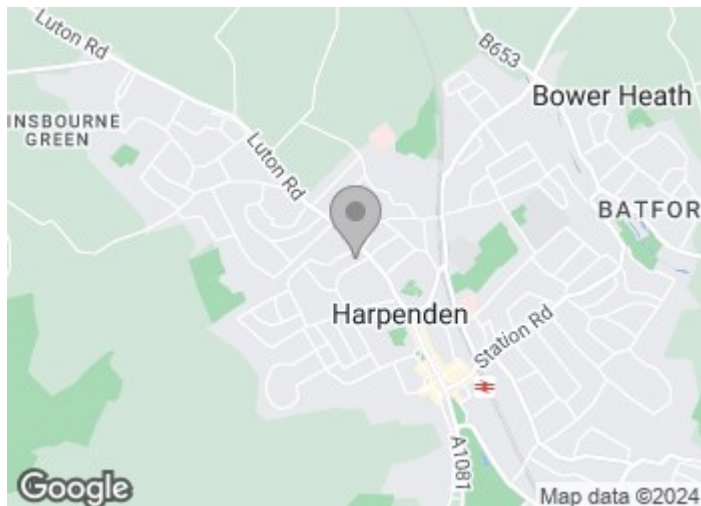
Bedroom One

14'2" x 12'4" (4.32 x 3.76)

Bedroom Two

10'4" x 8'4" (3.17 x 2.55)

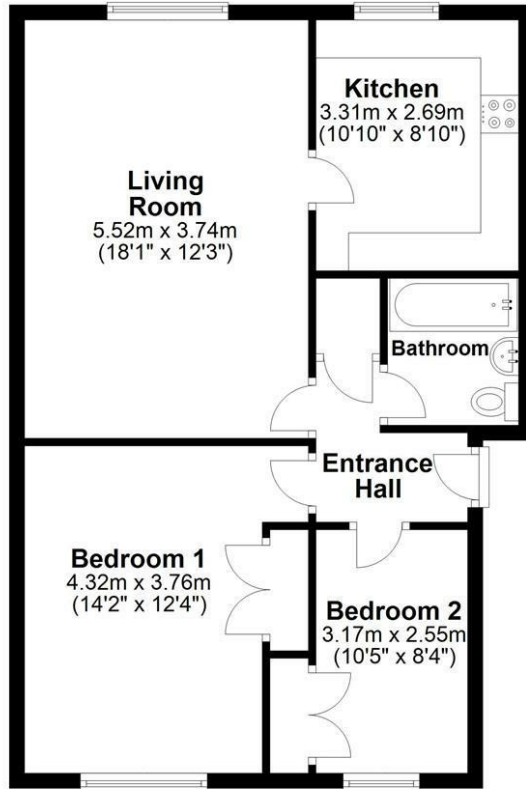
Bathroom





Floor Plan

Approx. 61.7 sq. metres (663.7 sq. feet)



Total area: approx. 61.7 sq. metres (663.7 sq. feet)

Sketch layout only. Not to scale. Plan produced for Whittaker & Co.

Plan produced using PlanUp.

These particulars, whilst believed to be accurate are set out as a general outline only for guidance and do not constitute any part of an offer or contract. Intending purchasers should not rely on them as statements of representation of fact, but must satisfy themselves by inspection or otherwise as to their accuracy. No person in this firm's employment has the authority to make or give any representation or warranty in respect of the property.

