



Jubilee Chapel Chapel Lane

Bendish, SG4 8JH

A charming converted chapel which was constructed in approx.1865, featuring an exceptionally well presented interior and a landscaped garden, set in the midst of a rural Hamlet which is surrounded by beautiful open countryside. Bendish is a small, friendly community, where everybody knows each other, which is what attracts people to living here. CHAIN FREE.

Guide price £545,000

Jubilee Chapel Chapel Lane

Bendish, SG4 8JH



- Stunning Chapel conversion, extensively modernised throughout
- Ground floor third bedroom with adjoining shower room
- Delightful landscaped garden and off street parking
- Beautiful living room with multi fuel burning stove
- Main bedroom with extensive walk-in wardrobe
- A chance to enjoy living in a very friendly rural community with a nearby village shop/post office, doctors surgery, pub and primary school in nearby Whitwell.
- Bespoke hand built kitchen, with quartz worksurfaces and an array of integrated appliances
- Generous second bedroom, access to eave storage. Well fitted main bathroom
- Whitwell stores (1.4 miles), Hitchin TC (5.8 miles) Harpenden (7.4 miles)

GROUND FLOOR

Entrance Hall

Cloak/Shower Room

L-Shaped Sitting/Dining Room

27'4 x 16'2 max (8.33m x 4.93m max)

Kitchen/Breakfast Room

16'1 x 9'2 (4.90m x 2.79m)

Bedroom Three

11'4 x 11'1 (3.45m x 3.38m)

FIRST FLOOR

Landing (with Study area)

Bedroom One

13'9 x 9'5 (4.19m x 2.87m)

Bedroom Two

17'10 x 9'5 (5.44m x 2.87m)

Main Bathroom

EXTERNALLY

Off Street Parking (to side)

Landscaped Rear Garden

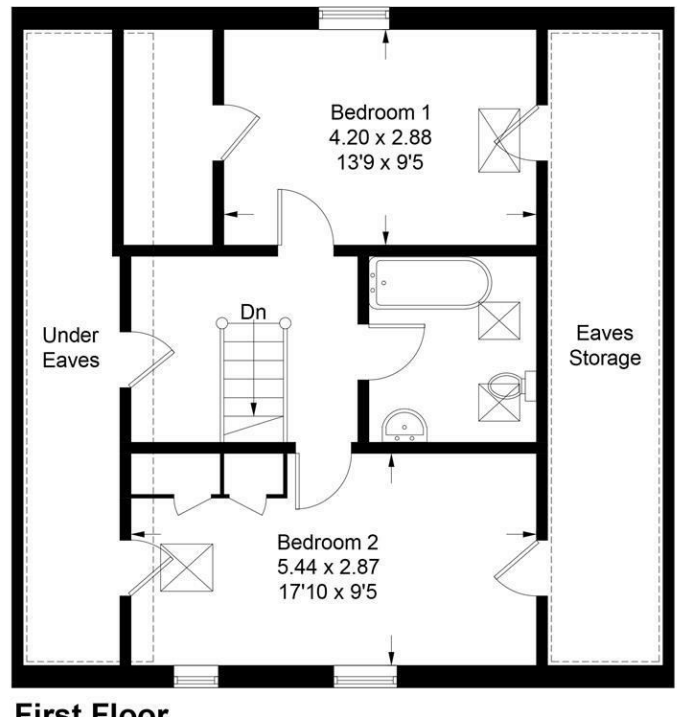
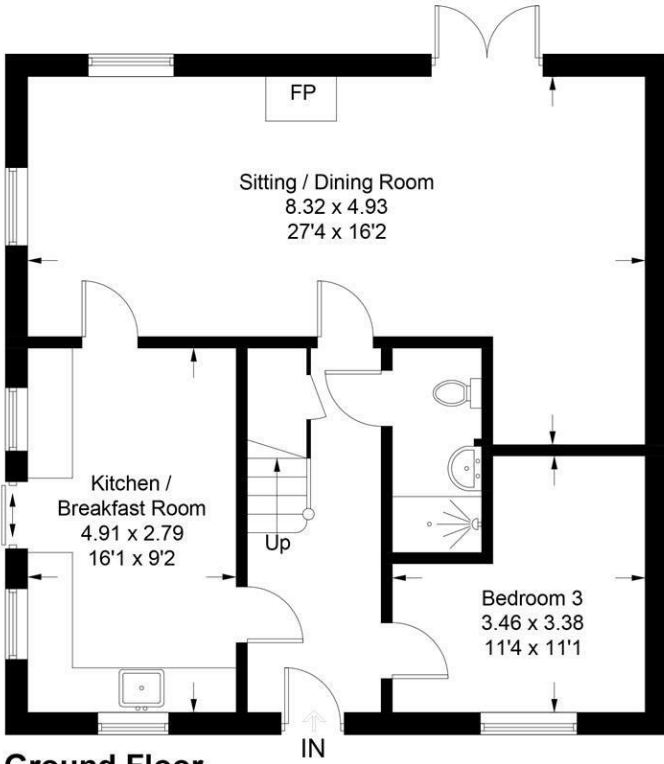


[Directions](#)



Jubilee Chapel

Approximate Gross Internal Area = 117.2 sq m / 1261 sq ft
 (Excluding Reduced Headroom)
 Reduced Headroom = 27.8 sq m / 299 sq ft
 Total = 145.0 sq m / 1560 sq ft



This plan is for layout guidance only. Not drawn to scale unless stated. Windows and door openings are approximate. Whilst every care is taken in the preparation of this plan, please check all dimensions, shapes and compass bearings before making any decisions reliant upon them. (ID984081)

These particulars, whilst believed to be accurate are set out as a general outline only for guidance and do not constitute any part of an offer or contract. Intending purchasers should not rely on them as statements of representation of fact, but must satisfy themselves by inspection or otherwise as to their accuracy. No person in this firm's employment has the authority to make or give any representation or warranty in respect of the property.

