

Flat 7 Stathams Court, Hemel Hempstead Road Redbourn, St Albans, AL3 7SA

A beautifully presented ground floor apartment with a well equipped kitchen, stunning bathroom and a lovely position with views of the historic St. Marys church. Set in the highly regarded village of Redbourn.

Offers in excess of £299,999

Flat 7 Stathams Court, Hemel Hempstead Road

Redbourn, St Albans, AL3 7SA



- Close to High Street amenities and the beautiful Redbourn Common
- Two spacious bedrooms
- Views over the historic village church
- impressive open plan living room incorporating a well fitted kitchen with integrated appliances
- Ground floor apartment
- Harpenden Mainline Station (4.1 miles), St Albans City Centre (5.2 miles)
- Stunning re-fitted, fully tiled bathroom
- allocated parking (2 spaces)
- Tenure Leasehold: 125 years from 2001, Ground Rent: £400 per annum, Service Charge: £180 pcm.

Residents Entrance Hall

(Communal)

Entrance Hall

Lounge/Diner

22'4 into bay x 16'10 (6.81m into bay x 5.13m)

Bedroom One

13'9 x 9'3 (4.19m x 2.82m)

Bedroom Two

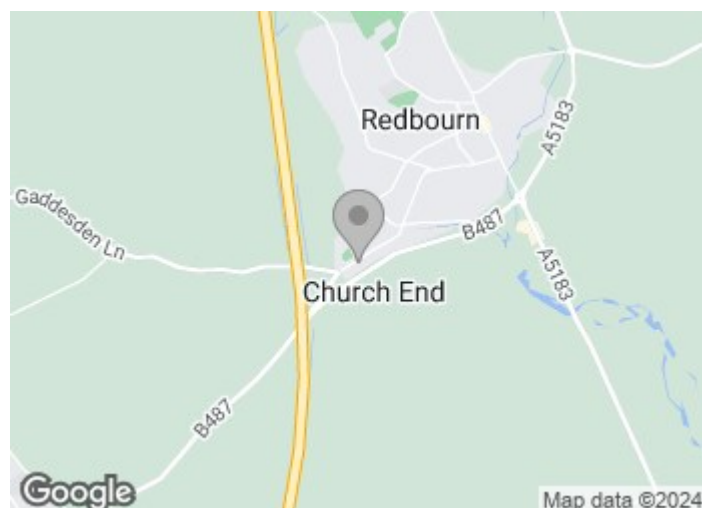
12' x 7'3 (3.66m x 2.21m)

Bathroom

Externally

Allocated Parking (2 spaces)

Communal Gardens

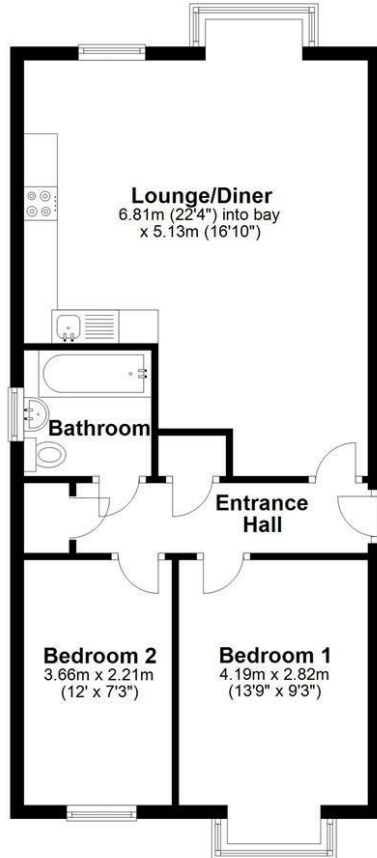


[Directions](#)



Floor Plan

Floor Plan
Approx. 57.8 sq. metres (622.3 sq. feet)



Total area: approx. 57.8 sq. metres (622.3 sq. feet)

Sketch layout only. Not to scale. Plan produced for Whittaker & Co.

Plan produced using PlanUp.

These particulars, whilst believed to be accurate are set out as a general outline only for guidance and do not constitute any part of an offer or contract. Intending purchasers should not rely on them as statements of representation of fact, but must satisfy themselves by inspection or otherwise as to their accuracy. No person in this firm's employment has the authority to make or give any representation or warranty in respect of the property.

