



Townsend Lane

Harpenden, AL5 2PW

Built by highly regarded local firm, Jarvis, this apartment is on the top floor (lift), of The Bourne - a much sought after development, in a prime central location. The Living Room has a private balcony and there is the additional benefit of two underground parking spaces, as well as communal gardens. Lease 103 years remaining. Please note there are four steps up to the front door of the apartment. . *CHAIN FREE*

Guide price £750,000

Townsend Lane

Harpenden, AL5 2PW



- Circa 1,100 sq ft
- Private balcony
- Lease 103 years remaining
- Top floor - lift
- Communal gardens
- Chain Free
- Prime central location
- Two underground parking spaces

Entrance Hall

Living Room

29'5" x 14'10" (max) (8.98 x 4.53 (max))

Balcony

Kitchen

14'1" x 10'2" (max) (4.31 x 3.12 (max))

Bedroom One

15'11" (max) x 10'11" (max) (4.87 (max) x 3.34 (max))

En-suite Bathroom

Bedroom Two

14'4" (max) x 9'5" (max) (4.39 (max) x 2.88 (max))

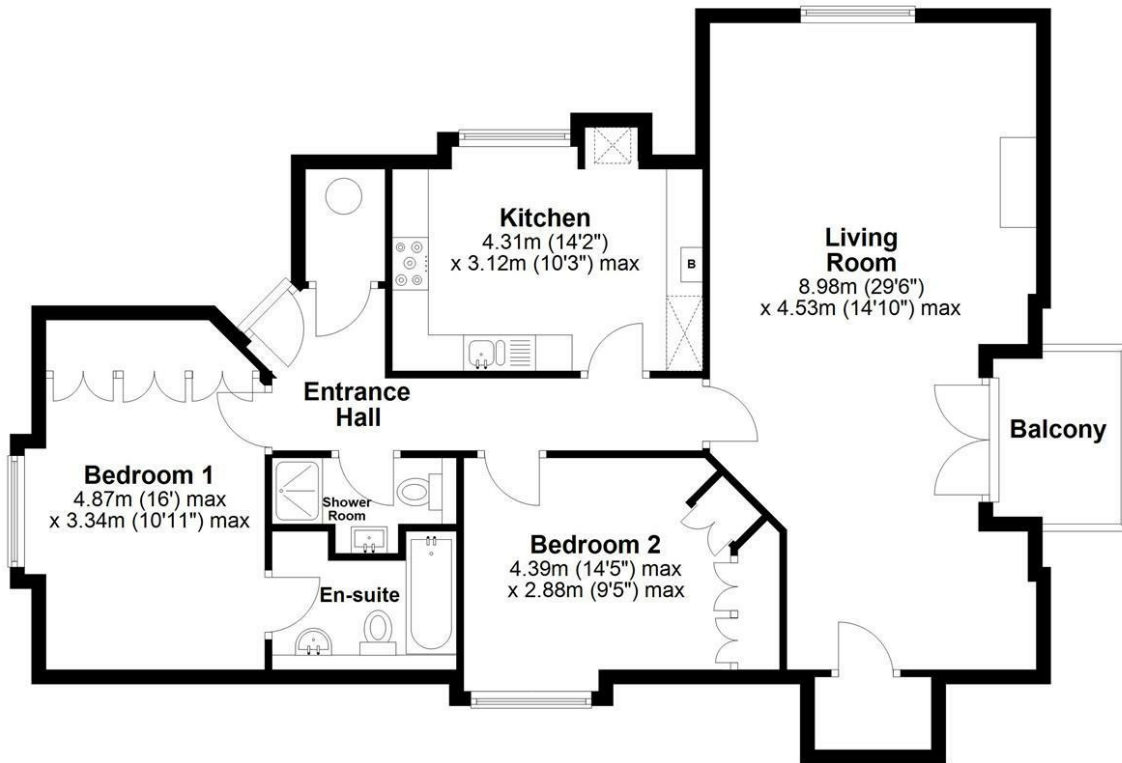
Shower Room





Ground Floor

Approx. 98.8 sq. metres (1063.4 sq. feet)



Total area: approx. 98.8 sq. metres (1063.4 sq. feet)

Sketch layout only. Not to scale. Plan produced for Whittaker & Co.

Plan produced using PlanUp.

These particulars, whilst believed to be accurate are set out as a general outline only for guidance and do not constitute any part of an offer or contract. Intending purchasers should not rely on them as statements of representation of fact, but must satisfy themselves by inspection or otherwise as to their accuracy. No person in this firm's employment has the authority to make or give any representation or warranty in respect of the property.

