



Riverford Close Harpenden, AL5 4LY

Extended and refurbished by our clients, this immaculately presented home of circa 1,240 sq ft includes an open plan Kitchen / Dining Room. Fantastic south facing, low maintenance garden and the additional benefit of two off-street parking spaces. Peaceful location within easy reach of Harpenden town centre and station and well placed for schooling.

Offers in excess of £700,000

Riverford Close

Harpenden, AL5 4LY



- Circa 1,250 sq ft
- Open plan Kitchen / Dining Room
- Peaceful location
- Extended & refurbished by our clients
- Garden south facing
- Close to town centre & station
- Extremely well presented
- Off-street parking for two cars
- Well placed for schooling

Kitchen

14'2" x 10'8" (4.32 x 3.27)

Dining Room

14'7" x 14'0" (4.45 x 4.29)

Lounge

19'2" x 13'3" (5.85 x 4.05)

Cloakroom

Bedroom One

13'3" x 10'7" (4.05 x 3.24)

Dressing Room

En-suite Shower Room

Bedroom Two

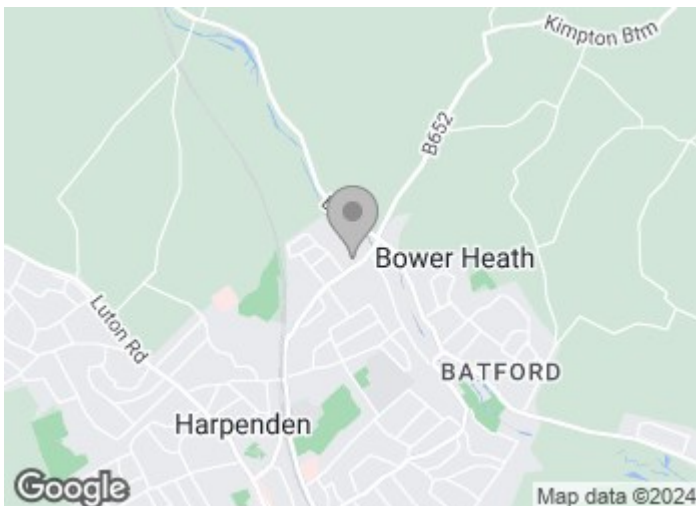
14'1" x 9'9" (4.30 x 2.99)

En-suite Shower Room

Bedroom Three

14'1" x 7'5" (4.30 x 2.27)

Family Bathroom

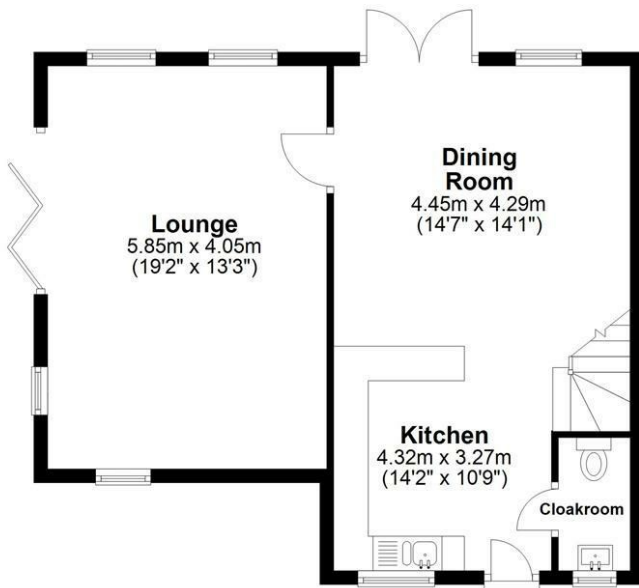




Floor Plan

Ground Floor

Approx. 55.7 sq. metres (599.3 sq. feet)



First Floor

Approx. 59.6 sq. metres (641.8 sq. feet)



Total area: approx. 115.3 sq. metres (1241.1 sq. feet)

Sketch layout only. Not to scale. Plan produced for Whittaker & Co.

Plan produced using PlanUp.

These particulars, whilst believed to be accurate are set out as a general outline only for guidance and do not constitute any part of an offer or contract. Intending purchasers should not rely on them as statements of representation of fact, but must satisfy themselves by inspection or otherwise as to their accuracy. No person in this firm's employment has the authority to make or give any representation or warranty in respect of the property.

