



## Gaddesden Row

Gaddesden Row, HP2 6HW

Built by the highly regarded Jarvis - as part of an exclusive development of just four houses, Beechwood View - this is an immaculately presented family home of circa 2,400 sq ft, arranged over three floors. A wonderful rural setting with an 135ft south west facing garden. Close to Beechwood Park School.

**Guide price £1,125,000**

# Gaddesden Row

Gaddesden Row, HP2 6HW



- Circa 2,400 sq ft
- Garden 135ft, south west facing
- Rural setting
- Arranged over three floors
- Close to Beechwood Park School
- Plenty of parking
- Open plan Kitchen / Dining / Family Room
- 15 mins drive to Berkhamsted / Hemel station

## Entrance Hall

## Living Room

20'11" x 12'11" (6.38 x 3.94)

## Kitchen / Dining / Family Room

37'6" x 16'10" (max) (11.45 x 5.15 (max))

## Utility Room

10'0" x 5'2" (3.07 x 1.60)

## Cloakroom

## Bedroom One

25'0" (max) x 11'3" (7.63 (max) x 3.45)

## Dressing Area

## En-suite Shower Room

## Bedroom Two

12'11" x 12'2" (3.95 x 3.72)

## Bedroom Three

12'11" x 12'0" (3.94 x 3.68)

## Bedroom Four

12'11" x 8'6" (3.94 x 2.61)

## Family Bathroom

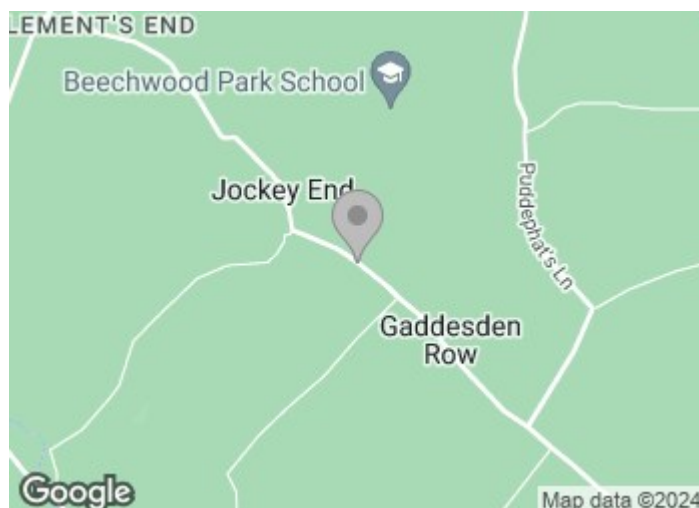
## Bedroom Five

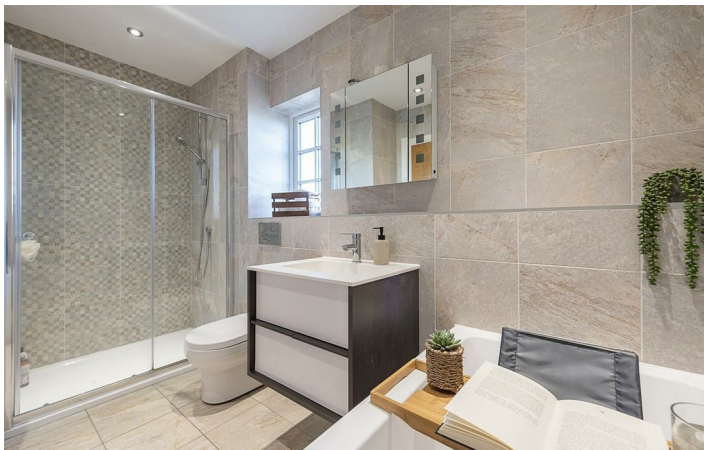
17'0" x 11'4" (5.19 x 3.46)

## Bedroom Six / Study

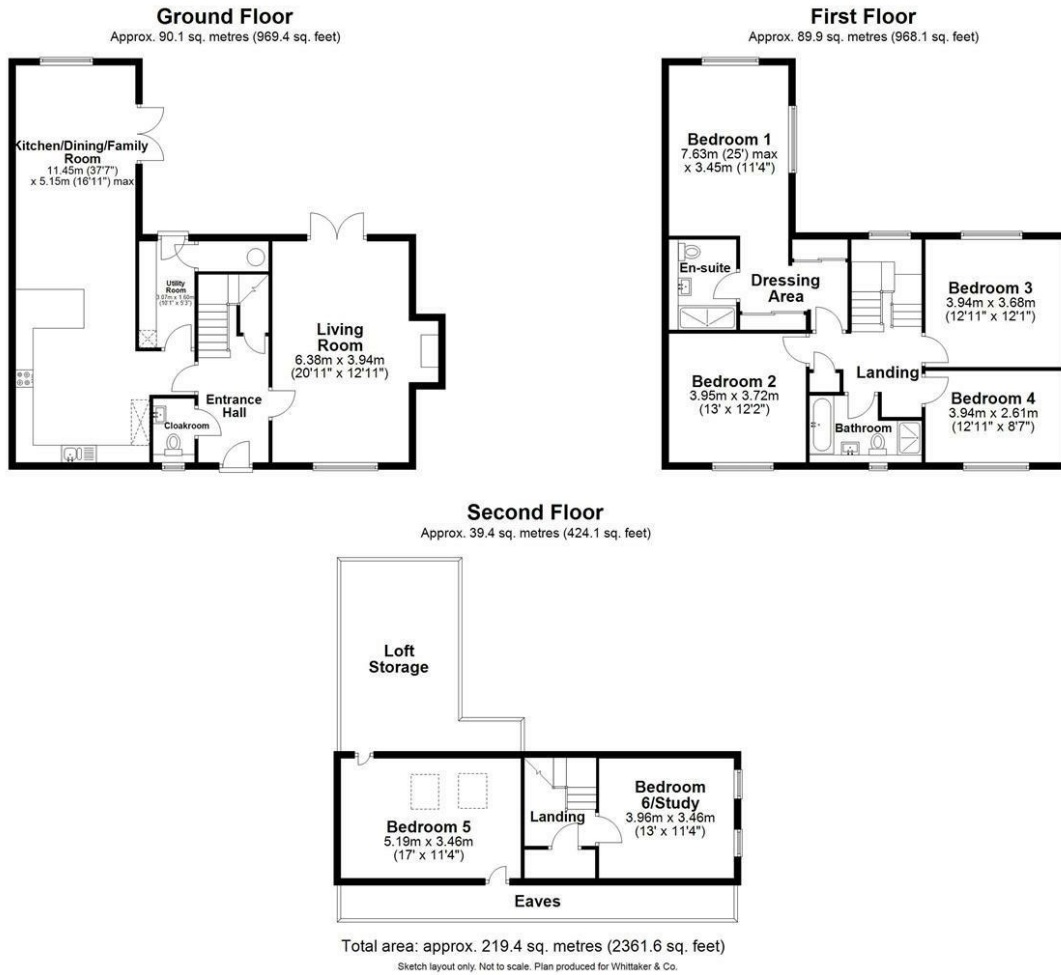
12'11" x 11'4" (3.96 x 3.46)

## Loft Storage





# Floor Plan



These particulars, whilst believed to be accurate are set out as a general outline only for guidance and do not constitute any part of an offer or contract. Intending purchasers should not rely on them as statements of representation of fact, but must satisfy themselves by inspection or otherwise as to their accuracy. No person in this firm's employment has the authority to make or give any representation or warranty in respect of the property.

