

Luton Road

Harpenden, AL5 3QE

CHAIN FREE Charming period cottage - overlooking open fields to the front and Kinsbourne Common to the rear - with a fabulous open plan Kitchen Diner. Private, low maintenance garden and the additional benefit of off-street parking to the rear. Close to the amenities of Harpenden town centre.

Offers in excess of £450,000

Luton Road

Harpenden, AL5 3QE



- Chain Free
- Two Bedrooms
- Overlooking Kinsbourne Common
- Well presented throughout
- Low maintenance Garden
- Close to amenities of Harpenden
- Super open plan Kitchen / Dining Room
- Off-street parking to rear
- Period property

Living Room

10'4" x 11'10" (3.16 x 3.62)

Kitchen / Dining / Family Room

29'1" x 11'10" (8.89 x 3.61)

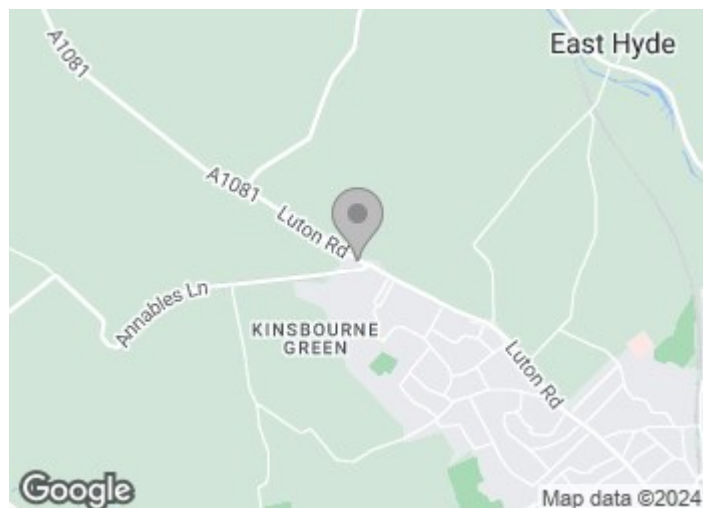
Bedroom One

10'5" x 11'10" (max) (3.19 x 3.62 (max))

Bedroom Two

9'7" x 5'10" (2.93 x 1.80)

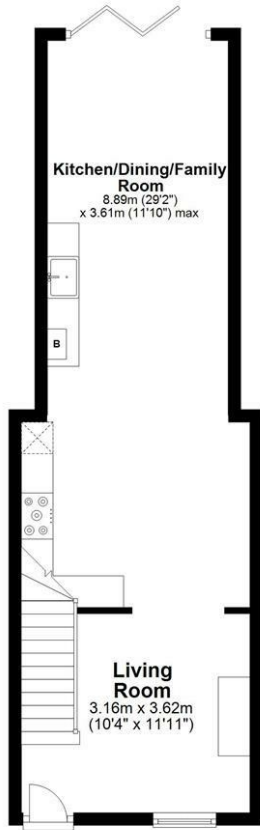
Bathroom



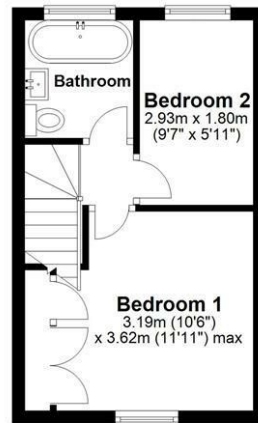


Floor Plan

Ground Floor
Approx. 39.8 sq. metres (427.9 sq. feet)



First Floor
Approx. 22.5 sq. metres (241.9 sq. feet)



Total area: approx. 62.2 sq. metres (669.8 sq. feet)

Sketch layout only. Not to scale. Plan produced for Whittaker & Co.

Plan produced using PlanUp.

These particulars, whilst believed to be accurate are set out as a general outline only for guidance and do not constitute any part of an offer or contract. Intending purchasers should not rely on them as statements of representation of fact, but must satisfy themselves by inspection or otherwise as to their accuracy. No person in this firm's employment has the authority to make or give any representation or warranty in respect of the property.

