

Dorchester
Dorset, DT1











Dorchester, Dorset DT1

This stunning and stylish town house offers a truly enviable lifestyle. A feeling of grandeur and quality are apparent as you walk from room to room. The floor plan has created a spacious house whilst harnessing a natural flow of light to ensure a sense of warmth in every space. Set in the celebrated development of Poundbury, local amenities are only a walk away, as are many popular schools in Dorchester town.

 3
  4
  2
  2

- Four Bedroom End of Terrace Property with Double Garage
- 1st Floor Terrace Access from Master Bedroom & 2nd Sitting Room
- Open Plan Kitchen/Dining Room with Separate Utility Room
- Ground Floor & First Floor Sitting Rooms
- Property is Presented Exceptionally Throughout
- Downstairs Cloakroom, Main Bathroom and en-suite Facilities
- Property Still Under NHBC Guarantee for Peace of Mind
- Enclosed Rear Garden with Door to Double Garage, Gate to Parking

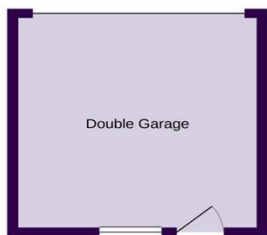


Tom Bell
07849085070
tom.b@meyersstates.com

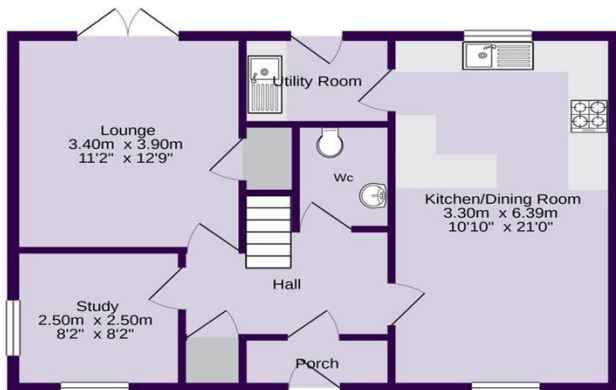


Harry Craddock
07849085071
harry.c@meyersstates.com

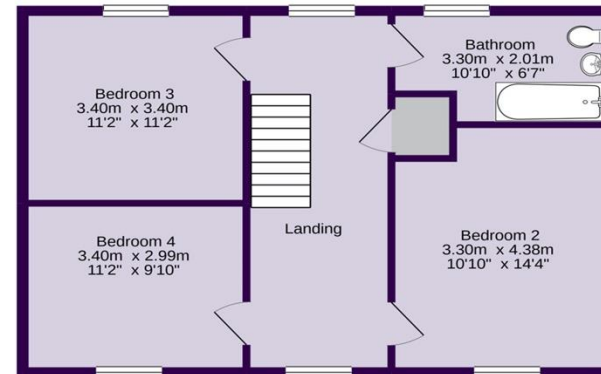
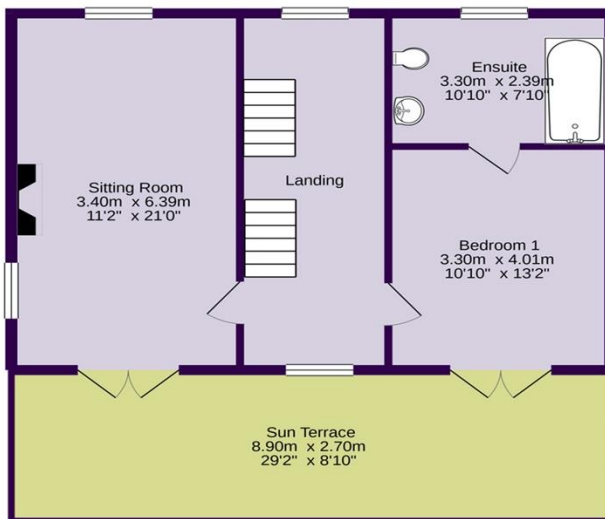




FIRST FLOOR



GROUND FLOOR



SECOND FLOOR

PARKING:  

LADOCK TERRACE,
POUNDBURY



MEYERS
MOVING BEYOND EXPECTATIONS

Copyright: Meyers Estates 2019

APPROXIMATE AREAS

GROUND FLOOR AREA	797 SQ/FT
FIRST FLOOR AREA	612 SQ/FT
SECOND FLOOR AREA	612 SQ/FT
COUNCIL TAX	F
EPC RATING	
APPROXIMATE UTILITY COSTS	

DISCLAIMER: This information has been prepared as a guide only. The Vendor and Estate Agent make no warranties as to its accuracy and all interested parties must rely on their own enquiries.

01305 259436
info@meyersstates.com

1 Queen Mother Square, Poundbury, Dorset DT1 3BL

www.meyersstates.com

Disclaimer: We have prepared these property particulars as a general guide to a broad description of the property. They are not intended to constitute part of an offer or contract. We have not carried out a structural survey and the services, appliances and specific fittings have not been tested. All photographs, measurements, floorplans and distances referred to are given as a guide only and should not be relied upon for the purchase of carpets or any other fixtures or fittings. Lease details, service charges and ground rent (where applicable) and council tax are given as a guide only and should be checked and confirmed by your solicitor prior to exchange of contracts. The copyright of all details, photographs and floorplans remain exclusive to Meyers.



MEYERS
MOVING BEYOND EXPECTATIONS