

**Maiden Castle Road  
Dorchester  
DT1**

**MEYERS**  
MOVING BEYOND EXPECTATIONS



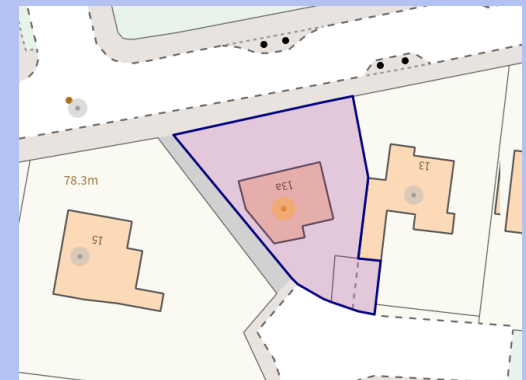
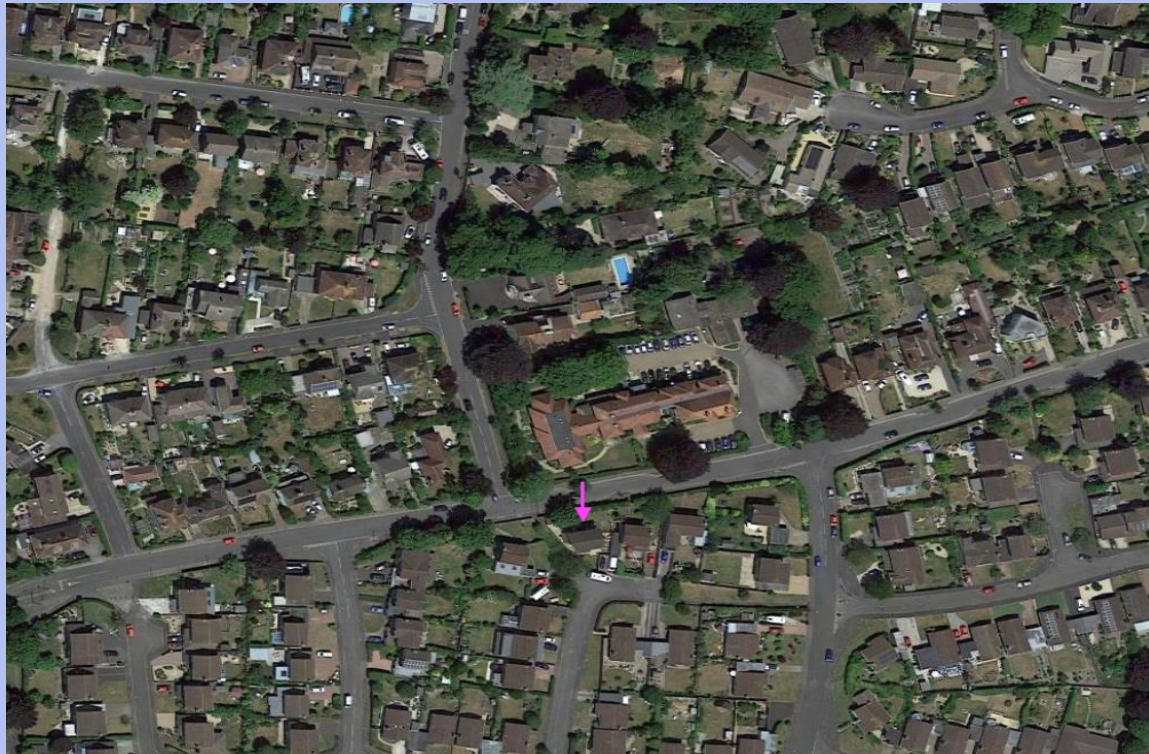
## Summary of Features

- > Three Double Bedrooms
- > Two Reception Rooms
- > Modern Kitchen
- > Front, Side and Rear Gardens
- > Driveway for Two Cars
- > Wood Burning Stove
- > Well Located For Schools
- > Distant Countryside Views

**£475,000**

**Freehold**

Modern and well-presented three bedroom detached family home with two reception rooms, wood burning stove, en-suite shower room, front side and rear gardens. Private driveway in a highly sought after location close to local schools



For Guidance Only



Situated in a residential area, this address offers proximity to local amenities, schools, and the town center. Maiden Castle Road is well-regarded for its quiet, suburban feel while still being close to public transport links and green spaces like the nearby Maumbury Rings and Dorset County Hospital. The property likely benefits from a mix of urban convenience and local charm.

This property offers a great space for families, with a wrap-around garden, kitchen with an arch into the dining room which has large floor to ceiling windows, a porch for coats and shoes, and three double bedrooms, with the master having an ensuite. The property has two allocated parking spaces on a private driveway to the rear of the property and is within walking distance to schools, shops and leisure center.

### MATERIAL INFORMATION FOR BUYERS

**Council Tax:** Band E (Approx: £3,060)

**Services:** Mains Services including Electric and Drainage

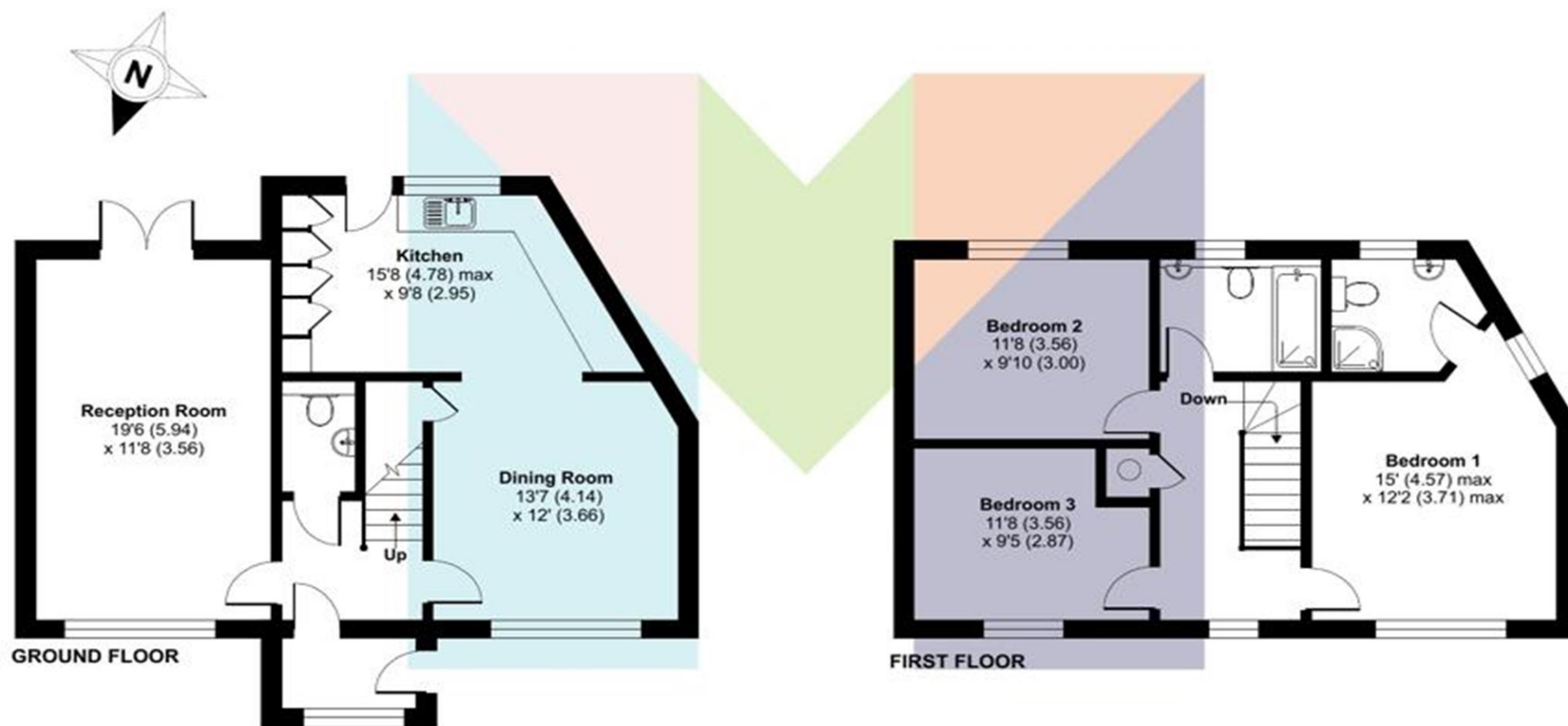
**Water & Sewage:** Wessex Water

**Approx Dates / Ages**

**Built:** Approx 2007-2011

**Parking:** Driveway for two cars

Score	Energy rating	Current	Potential
92+	A		
81-91	B		82 B
69-80	C	80 C	
55-68	D		
39-54	E		
21-38	F		
1-20	G		



## Maiden Castle Road, Dorchester

Approximate Area = 1285 sq ft / 119.3 sq m

For identification only - Not to scale



Floor plan produced in accordance with RICS Property Measurement 2nd Edition, Incorporating International Property Measurement Standards (IPMS2 Residential). © nêchecom 2024. Produced for Meyers Estate. REF:1224957





MEYERS ESTATE AGENTS

1 Queen Mother Square,  
Poundbury, Dorset, DT1 3BL

01305 259436

[www.meyersstates.com](http://www.meyersstates.com)

For an instant online valuation for sales or lettings click here