

1 Queen Mother Square, Poundbury, DT1 3BL

Tel: 01305 259436

Email: info@meyersstates.com

www.meyersstates.com

Your Local Award Winning Estate Agency



MEYERS

MOVING BEYOND EXPECTATIONS



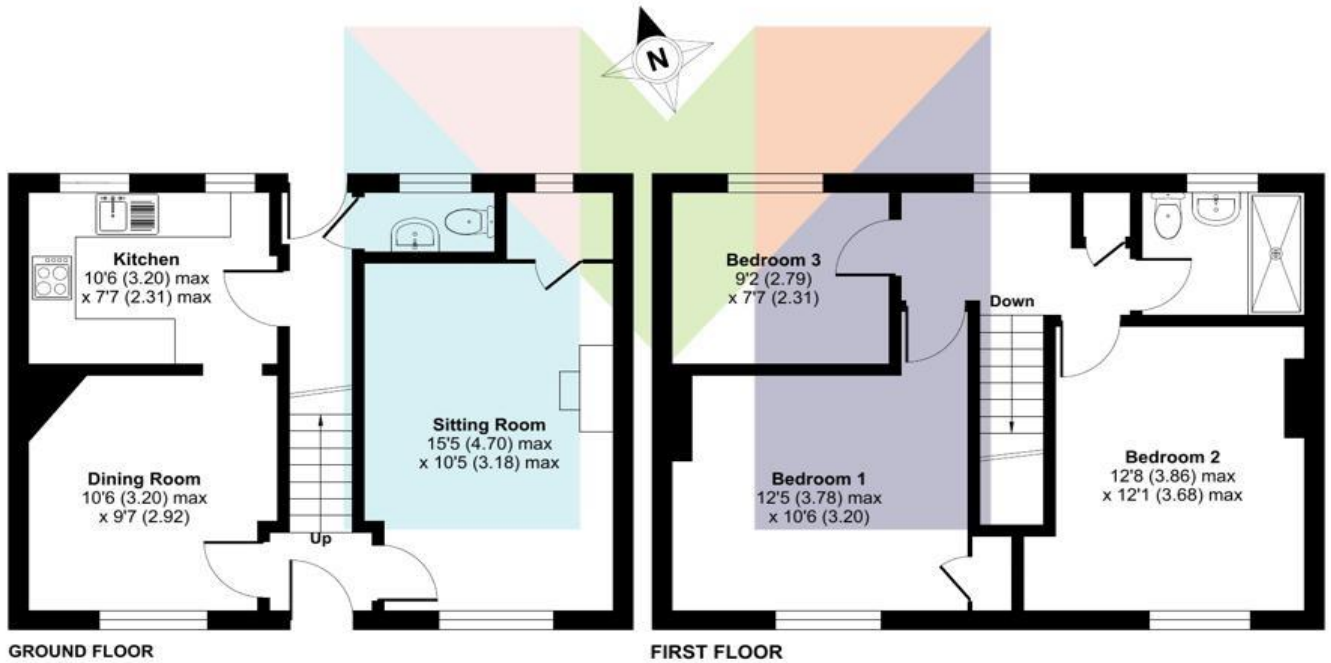
7 Milford Road

Dorchester DT1 2LG

£265,000

- Three Bedroom Family Home
- Requires Updating
- Two Reception Rooms

- Gas Central Heating
- Enclosed Rear Garden
- Residential Parking Permit Scheme



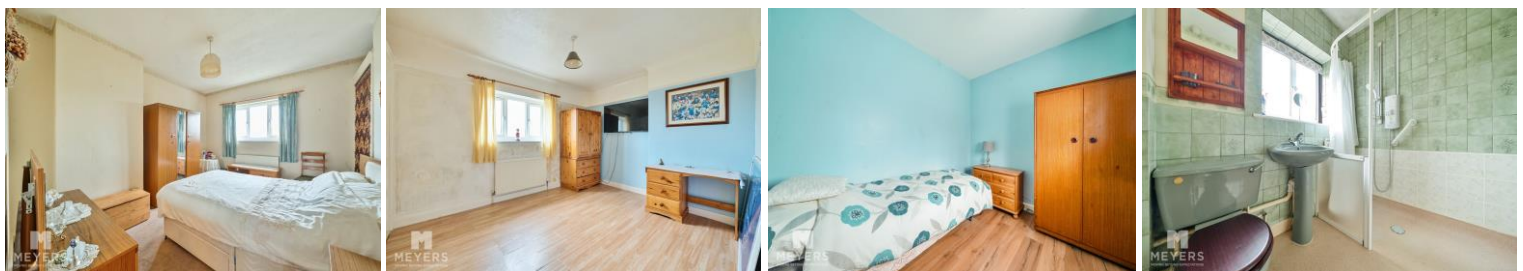
Milford Road, Dorchester

Approximate Area = 958 sq ft / 89 sq m

For identification only - Not to scale

Floor plan produced in accordance with RICS Property Measurement 2nd Edition, incorporating International Property Measurement Standards (IPMS2 Residential). © nitchecom 2024. Produced for Meyers Estate. REF:1197632

Meyers are recommendation based family estate agents with a simple goal to provide you with an exceptional level of service, combining good old fashioned values with cutting edge marketing for your home. We are passionate about the local area and care greatly about our community and our contribution towards it. Our Poundbury HQ office happily cover Dorchester, Weymouth, Portland, Blandford, Sherborne, Yeovil, Bridport and the countryside in between, along with surrounding towns and villages. We offer a full range of services including Sales, Lettings, Professional and Drone Photography, London Marketing Exhibitions, Independent Financial Advice and the conveyancers to help you move. Call us today FREEPHONE on 0800 8499256 for help selling your house today.



We have prepared these property particulars as a general guide to a broad description of the property. They are not intended to constitute part of an offer or contract. We have not carried out a structural survey and the services, appliances and specific fittings have not been tested. All photographs, measurements, floor plans and distances referred to are given as a guide only and should not be relied upon for the purchase of carpets or any other fixtures or fittings. Lease details, service charges and ground rent (where applicable) and council tax are given as a guide only and should be checked and confirmed by your Solicitor prior to exchange of contracts. The copyright of all details, photographs and floor plans remain exclusive to Meyers Estate Agents.