

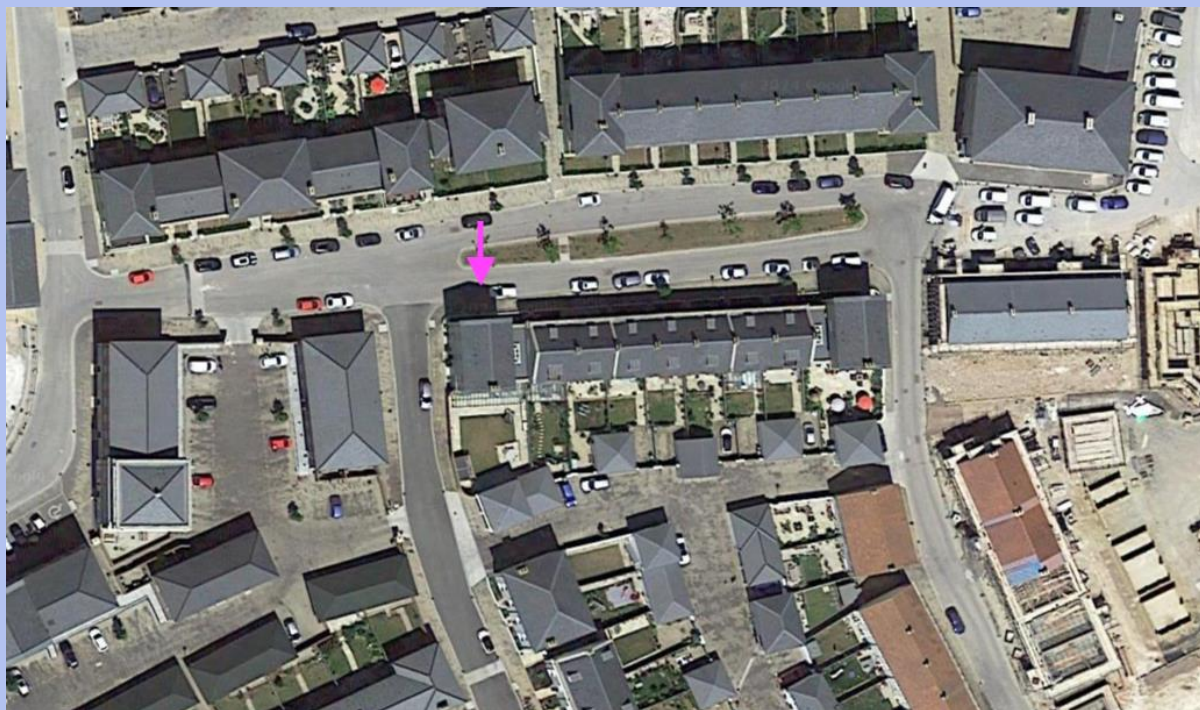
Hayward House
Poundbury
DT1 3ES



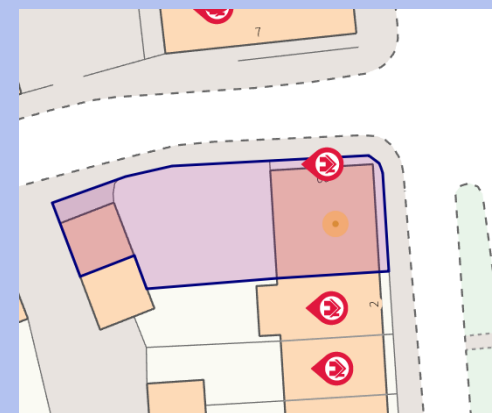
Summary of Features

- > Five Generous Bedrooms
- > Considered One Of The Biggest Gardens In Poundbury
- > Three Reception Rooms
- > Light and Airy Throughout
- > Sociable Kitchen Leading to Sun Room
- > Four Bathrooms, Two are Ensuite
- > Double Garage with Room Above
- > EPC RATING: B

**Offers over
£900,000
Freehold**



Substantial five/six-bedroom house situated in Poundbury and sold with no forward chain. Hayward House is known as one of the two iconic 'bookends' in Poundbury and offers ample accommodation spread over three floors. A light and airy property comprising of five/six bedrooms, three/four reception rooms and double garage with further storage room above with installed electric car sockets.



For Guidance Only



Poundbury is a planned urban development located near Dorchester in Dorset, England. Designed by the late architect and urbanist Prince Charles, it aims to create a sustainable, walkable community with a focus on traditional architectural styles and a mix of residential, commercial, and public spaces. The development emphasizes local craftsmanship, a strong sense of community, and environmental sustainability, blending modern living with classical design principles. Since its inception in the 1990s, Poundbury has grown steadily and is often cited as a model for new urbanism in the UK.

The location on Hayward Road is within easy reach of the local amenities in Poundbury, including shops, cafes, and community facilities, making it a convenient and attractive place to live. Poundbury also offers excellent transport links to the town of Dorchester and the wider Dorset area, providing a mix of rural and urban living.

MATERIAL INFORMATION FOR BUYERS

Council Tax: Band G

Services: Gas and Electric

Approx Dates / Ages

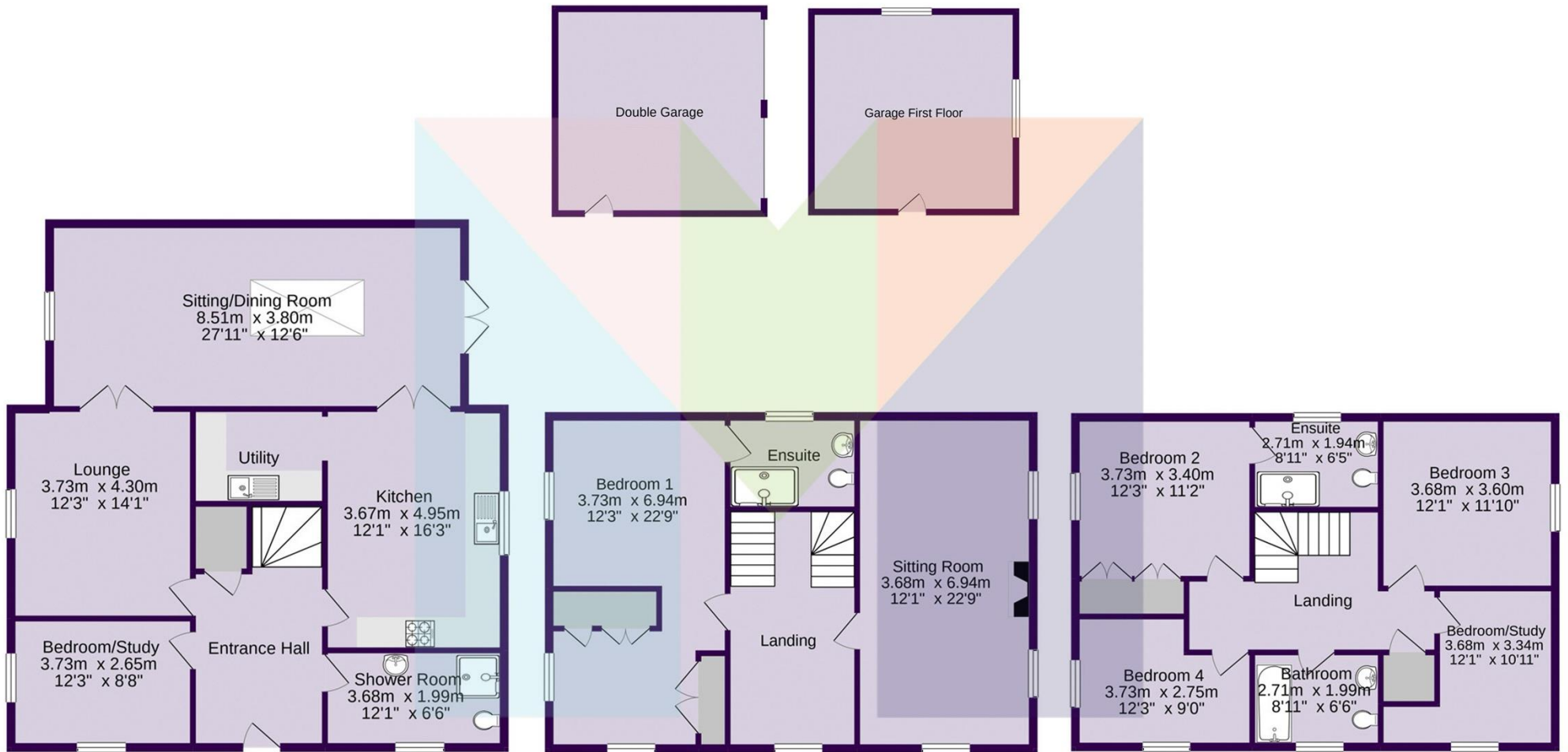
Property Age: Built in 2019

Boiler: 2019

Parking: Double Garage

Score	Energy rating	Current	Potential
92+	A		
81-91	B	85 B	90 B
69-80	C		
55-68	D		
39-54	E		
21-38	F		
1-20	G		

Energy efficiency



GROUND FLOOR

FIRST FLOOR

FIRST FLOOR

HAYWARD SQUARE,
POUNDBURY



Approximate Floorspace: 3300 sq/ft

Copyright: Meyers Estates 2020

DISCLAIMER: This information has been prepared as a guide only. The Vendor and Estate Agent make no warranties as to its accuracy and all interested parties must rely on their own enquiries.



MEYERS ESTATE AGENTS

1 Queen Mother Square,
Poundbury, Dorset, DT1 3BL

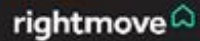
📞 01305 259436

🌐 www.meyersstates.com

For an instant online valuation for sales or lettings click here



Nominated by Rightmove as one of the top 3% of all estate agents in the UK.



Exceptional
Poundbury
Estate Agency



BRITISH
PROPERTY
AWARDS
2019

GOLD WINNER

BEST ESTATE AGENT
IN DORCHESTER



BRITISH
PROPERTY
AWARDS
2018-2019

GOLD WINNER

BEST LETTING AGENT
IN DORCHESTER



The Property
Ombudsman