

The Waterside Apartments,
Pavilion Road

West Bridgford
Nottingham
NG2 5PJ

Guide Price £310,000



Click for further information:-



Location



Gallery



Video



Contact



0115 841 1155



- No upward chain!
- Two-bedroom apartment
- Family bathroom and en-suite
- Open plan living kitchen
- River views
- Sought-after West Bridgford location
- Close to all local amenities
- Viewing essential!
- Council Tax Band - D
- Tenure - Leasehold



0115 841 1155



Location



Gallery



Video



Contact

Pavilion Road, [West Bridgford, Nottingham, NG2 5PJ](#)

Key Features

The Waterside Apartments, a stunning modern development nestled in the highly sought-after West Bridgford area – just a stone's throw from local shops, cafes, and amenities. With no upward chain, this stylish apartment is ready for you to move straight in and start enjoying riverside living at its finest.

Step inside to a contemporary open-plan living and kitchen area, where sleek wall and base units and integrated appliances meet effortless style. The living space opens up to breathtaking views over the River Trent, creating the perfect backdrop for both relaxing evenings and weekend entertaining.

The apartment boasts two well-sized bedrooms, including a master suite with a private en-suite shower room, plus a modern three-piece bathroom for guests or family.

Enjoy the convenience and peace of mind of a concierge service, a secure intercom entry system, and your very own allocated parking space in this secure development.





0115 841 1155



Location



Gallery

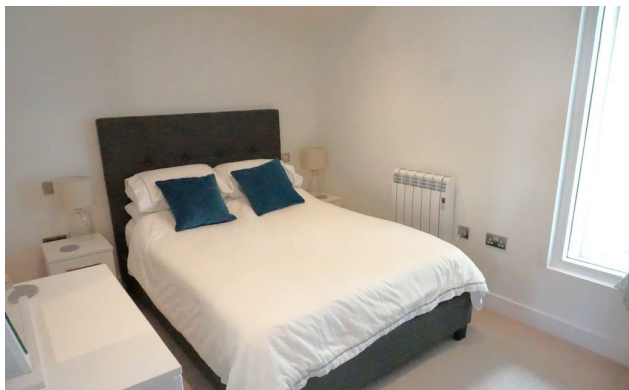


Video



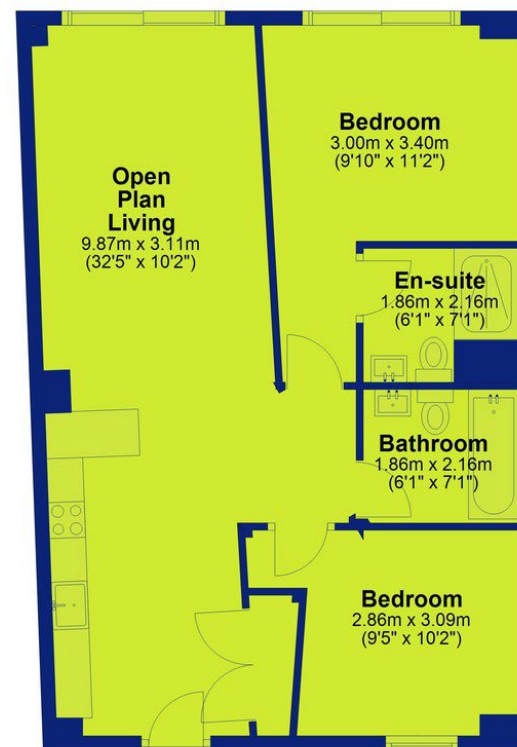
Contact

Pavilion Road, [West Bridgford, Nottingham, NG2 5PJ](#)



Eighth Floor

Approx. 65.2 sq. metres (702.1 sq. feet)



Total area: approx. 65.2 sq. metres (702.1 sq. feet)



0115 841 1155



Location



Gallery



Video



Contact



Pavilion Road, [West Bridgford](#), Nottingham, NG2 5PJ



| Score | Energy rating | Current | Potential |
|-------|---------------|---------|-----------|
| 92+ | A | | |
| 81-91 | B | | |
| 69-80 | C | 72 C | 72 C |
| 55-68 | D | | |
| 39-54 | E | | |
| 21-38 | F | | |
| 1-20 | G | | |

Interested in this home?

Contact the FHP Living Team on 0115 841 1155

23 Bridgford Road
West Bridgford
Nottingham
NG2 6AU

1 Weekday Cross
The Lace Market
Nottingham
NG1 2GB

These sales particulars have been prepared by FHP Living on the instruction of the vendor. Services, equipment and fittings mentioned in these particulars have NOT been tested, and as such, no warranties can be given. Prospective purchasers are advised to make their own enquiries regarding such matters. These sales particulars are produced in good faith and are not intended to form part of a contract. Whilst FHP Living have taken care in obtaining internal measurements, they should only be regarded as approximate.

Purchaser information - Under the Protecting Against Money Laundering and the Proceeds of Crime Act 2002, FHP Living require any successful purchasers proceeding with a purchase to provide two forms of identification i.e. passport or photocard driving license and a recent utility bill. This evidence will be required prior to FHP Living instructing solicitors in the purchase or the sale of a property.