

Redcliffe Road

Mapperley Park
Nottingham
NG3 5BW

Offers over £425,000



Click for further information:-



Location



Gallery



Video



Contact



0115 841 1155



- Popular location
- Spanning over three floors
- Three/ Four bedrooms
- Three modern bath/ shower rooms
- Spacious open plan living area
- Garage and carport
- Established rear garden
- Viewing essential!
- EPC Rating - C
- Tenure - Freehold



0115 841 1155



Location



Gallery



Video



Contact

46 Redcliffe Road, Mapperley Park, Nottingham, NG3 5BW

Key Features

Located in the highly sought-after Mapperley Park Conservation area, this well presented three-storey townhouse offers generous living space, modern interiors, and a good location within relatively easy reach of the Nottingham City Centre and its associated amenities. With a thoughtful layout and modern finishes, this home is ideal for families or professionals.

Ground Floor:

Welcoming entrance hall leading to a small study area, ideal for remote working.

Convenient shower room, perfect for guests.

Ground floor double bedroom, which could also serve as an additional reception room, home gym, or playroom.

First Floor:

Elegant open-plan lounge and sitting area, offering a bright and airy space to relax and entertain.

Separate dining area, seamlessly connected to a modern fitted kitchen with integrated appliances and ample storage.

Second Floor:

Three bedrooms, all offering natural light and generous proportions. The master bedroom of which features a stylish en-suite shower room. There is also a family bathroom with modern suite.

External Features

Integral garage providing secure parking and storage.

Additional carport, offering further parking convenience.

Private rear garden, perfect for outdoor dining, entertaining, or relaxing in a tranquil setting.

Mapperley Park is a prestigious conservation area known for its traditional and period homes, green surroundings, and relatively easy access to the city's amenities.





0115 841 1155



Location



Gallery

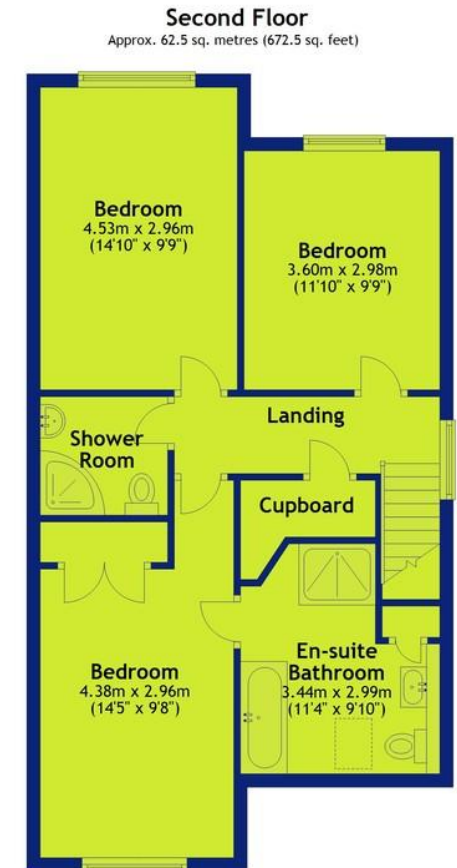
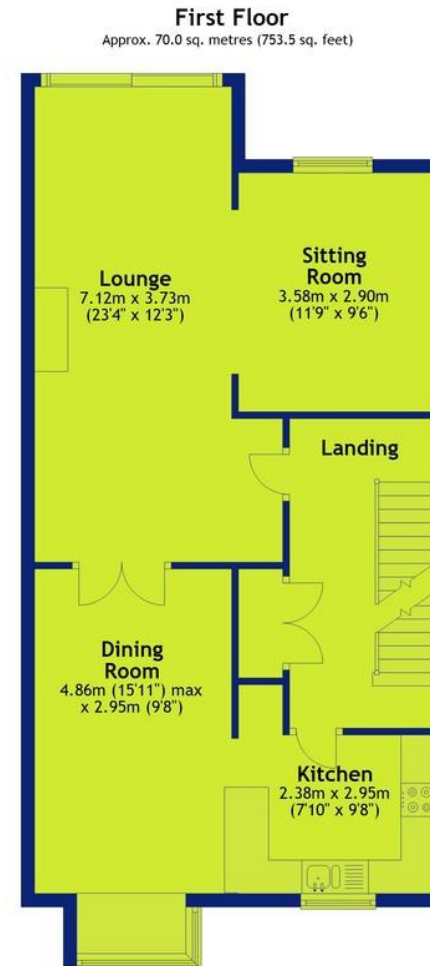


Video



Contact

46 Redcliffe Road, Mapperley Park, Nottingham, NG3 5BW



Total area: approx. 202.2 sq. metres (2176.4 sq. feet)



0115 841 1155



Location



Gallery



Video



Contact

46 Redcliffe Road, Mapperley PARK, Nottingham, NG3 5BW



Interested in this home?

Contact the FHP Living Team on 0115 841 1155

23 Bridgford Road
West Bridgford
Nottingham
NG2 6AU

1 Weekday Cross
The Lace Market
Nottingham
NG1 2GB

Score	Energy rating	Current	Potential
92+	A		
81-91	B		
69-80	C	69 C	78 C
55-68	D		
39-54	E		
21-38	F		
1-20	G		

These sales particulars have been prepared by FHP Living on the instruction of the vendor. Services, equipment and fittings mentioned in these particulars have NOT been tested, and as such, no warranties can be given. Prospective purchasers are advised to make their own enquiries regarding such matters. These sales particulars are produced in good faith and are not intended to form part of a contract. Whilst FHP Living have taken care in obtaining internal measurements, they should only be regarded as approximate.

Purchaser information - Under the Protecting Against Money Laundering and the Proceeds of Crime Act 2002, FHP Living require any successful purchasers proceeding with a purchase to provide two forms of identification i.e. passport or photocard driving license and a recent utility bill. This evidence will be required prior to FHP Living instructing solicitors in the purchase or the sale of a property.